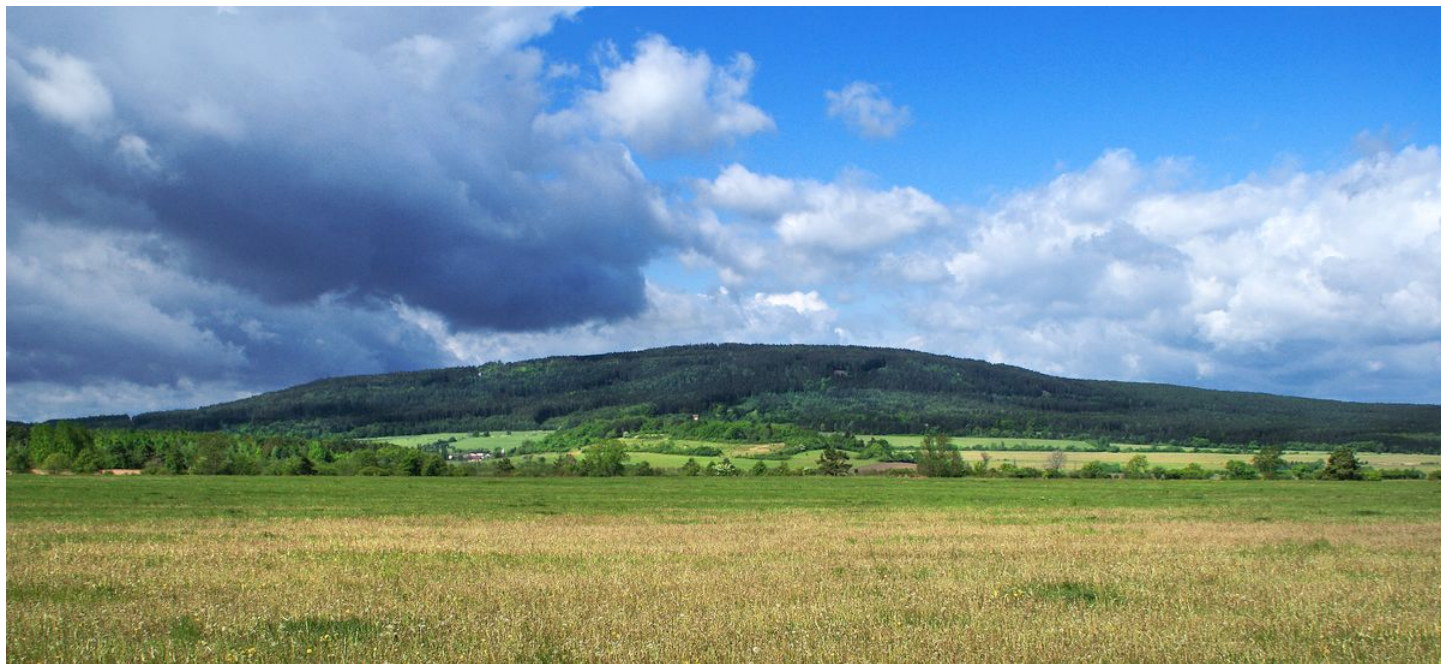


# Rejkovice, Příbram dist., Central Bohemian Region

## Prehistoric hillfort 'Plešivec'

(1300–800 BC)

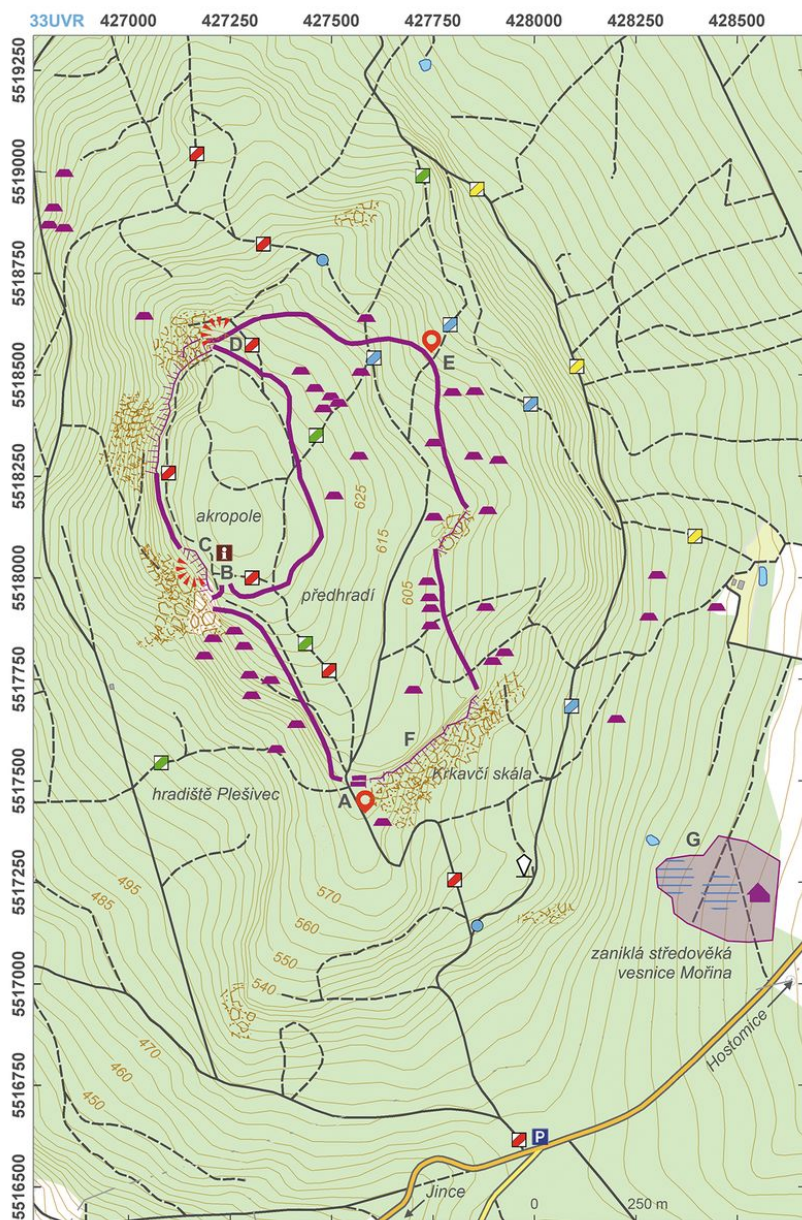


The prehistoric 'Plešivec' hillfort on a dominant hilltop could have served as a sacred precinct. The hillfort consists of an acropolis and an annexe, and to this day is surrounded by a stone bank up to 10 m wide. The site is enigmatic mainly because of its location away from the common inhabited areas, and a large number of bronze artefact hoards. Also discovered at the site were melting furnaces and other evidence of metallurgy production, which could have held both practical and ritual functions in the Bronze Age. A rather long tradition of the sacred site is also suggested by finds (hoards) from other periods. During the last two decades, the site has suffered heavily due to activities of illegal treasure hunters with metal detectors and, thus, many prehistoric finds have probably been lost forever.

**References:** Jelínek 1896; Motyková 1992; Čtverák a kol. 2003; Cílek a kol. 2005; Křivánek – Kuna 2006.

**Navigation points:** N 49°48'18.51", E 13°59'35.87" (south); N 49°48'53.82", E 13°59'44.55" (north).

**Map notes:** A – 'Old Gate', location of the original entrance and several hoard finds; B – acropolis entrance; C – edge of the acropolis with a beautiful view of the valley; D – the 'Zahrada' ('Garden') location where inner and outer banks meet; E – modern road cut through the bank; F – 'Raven's Rock', a natural rock incorporated into the fortifications; G – deserted medieval village of 'Mořina'.



Access map / site plan.

After Kuna et al. 2014.





Stone bank of the hillfort.

Photo M. Kuna, 2003.



Stone bank.

Photo M. Kuna, 2003.





Stone bank on eastern side of the inner hillfort - acropolis.

Photo J. Marounek, 2008.



Stone bank damaged by forest works.

Photo M. Kuna 2003.



Bank disturbed by gathering of the wood.

Photo M. Kuna 2003.



View of Litavka valley.

Photo J. Marounek, 2008.





One of windthrows with pottery sherds.

Photo M. Kuna, 2003.



Late Bronze Age amphora found in a windthrow on the hillfort; found by M. Gelnar around 2000.

Photo M. Kuna, 2004.



Rescue excavations near Stará Vrata.

Photo M. Kuna, 2003.