

Ráječko, Blansko dist., Southern Moravia Region

Early modern coal kilns

(18th cent.?)

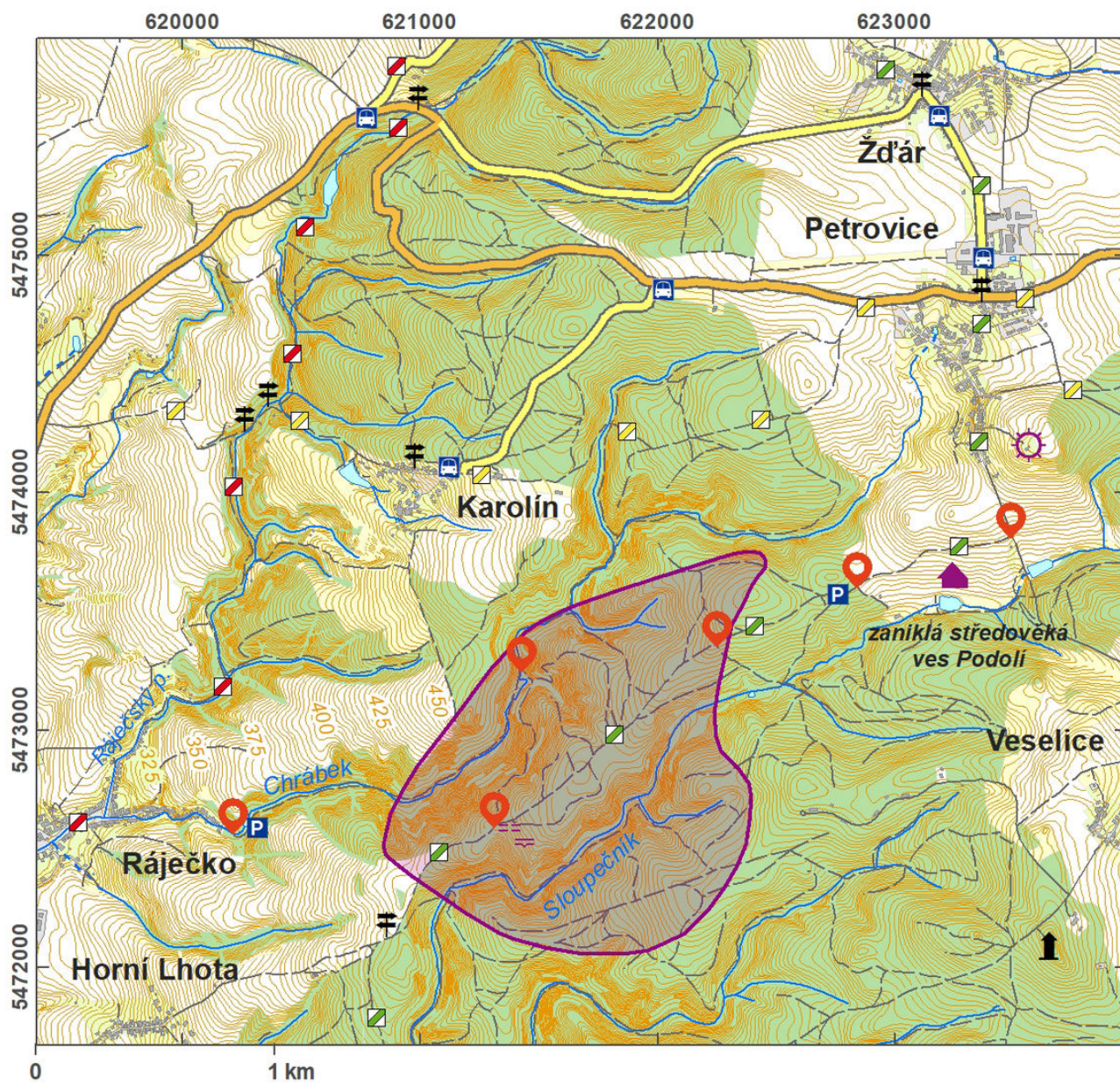


This site witnesses traditional charcoal production. The remains of the charcoal piles are inconspicuous archaeological features adding to the character of the forest landscape. The choice of the site for burning the wood was important, preferably on a lee side, on a gentle slope or at the foot of a slope, sometimes on a ridge near a water source or path. Thanks to aerial laser scanning, 28 anthropogenic features could be identified as charcoal piles detected in the cadastral areas of Ráječko, Petrovice and others. They appear as horizontal platforms, mostly of 12 × 12 m, partially cut into the slopes. Their visibility and state of preservation differ. Many charcoal production sites are preserved in the landscape; due to their invisibility, they are often being destroyed out of ignorance.

References: Černý 1979; Dragoun – Matoušek 2004; Vašek 2013; Knechtová 2015; Knechtová – Vašek – Hložek, in print.

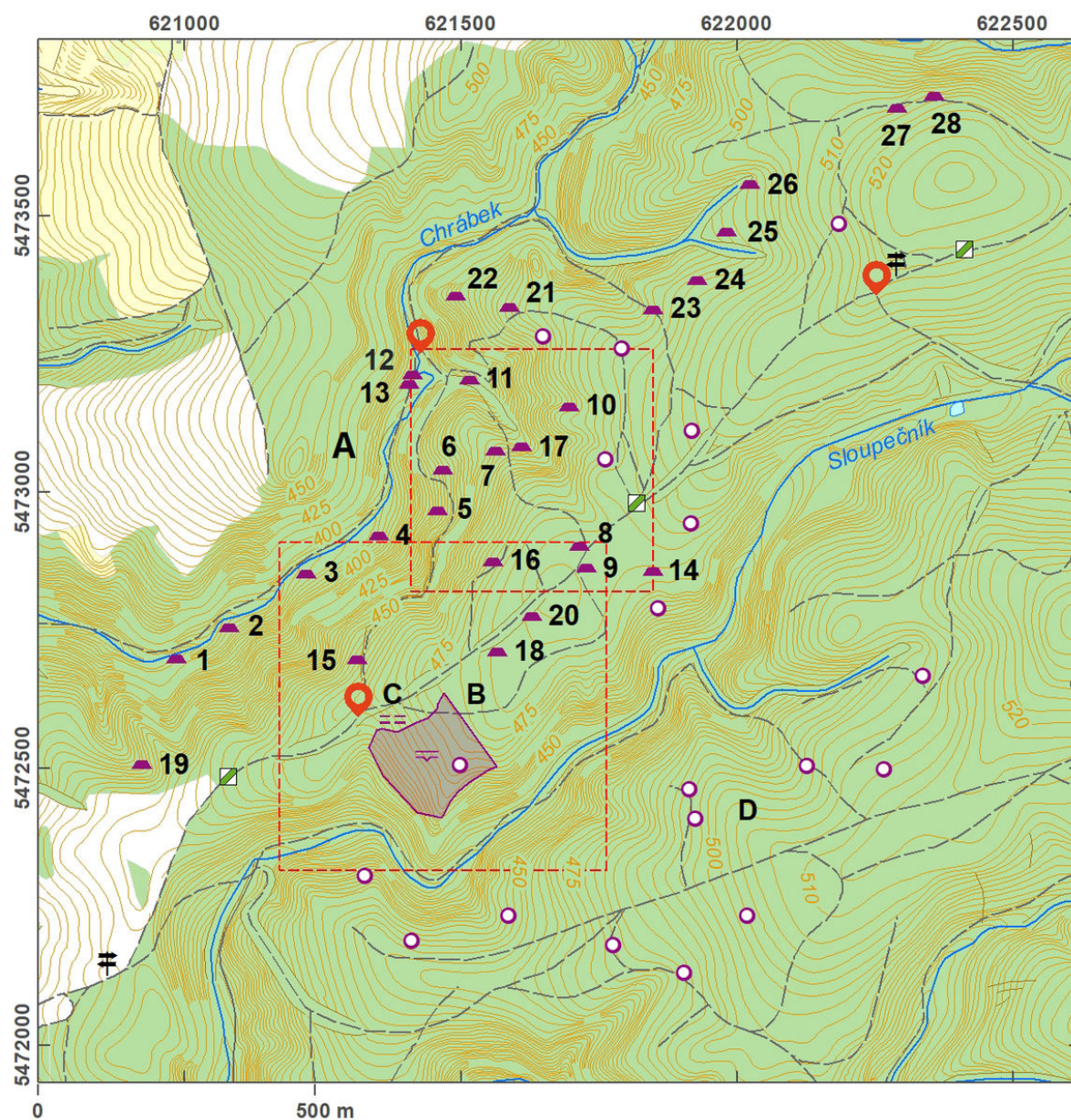
Navigation point: N 49°23'38.92", E 16°39'24.12" (parking ground in the end of the Ráječko village).

Map notes: 1–28, A – charcoal production site; B – fields; C – hollow ways; D – anthropogenic features; X – natural features/other relics.



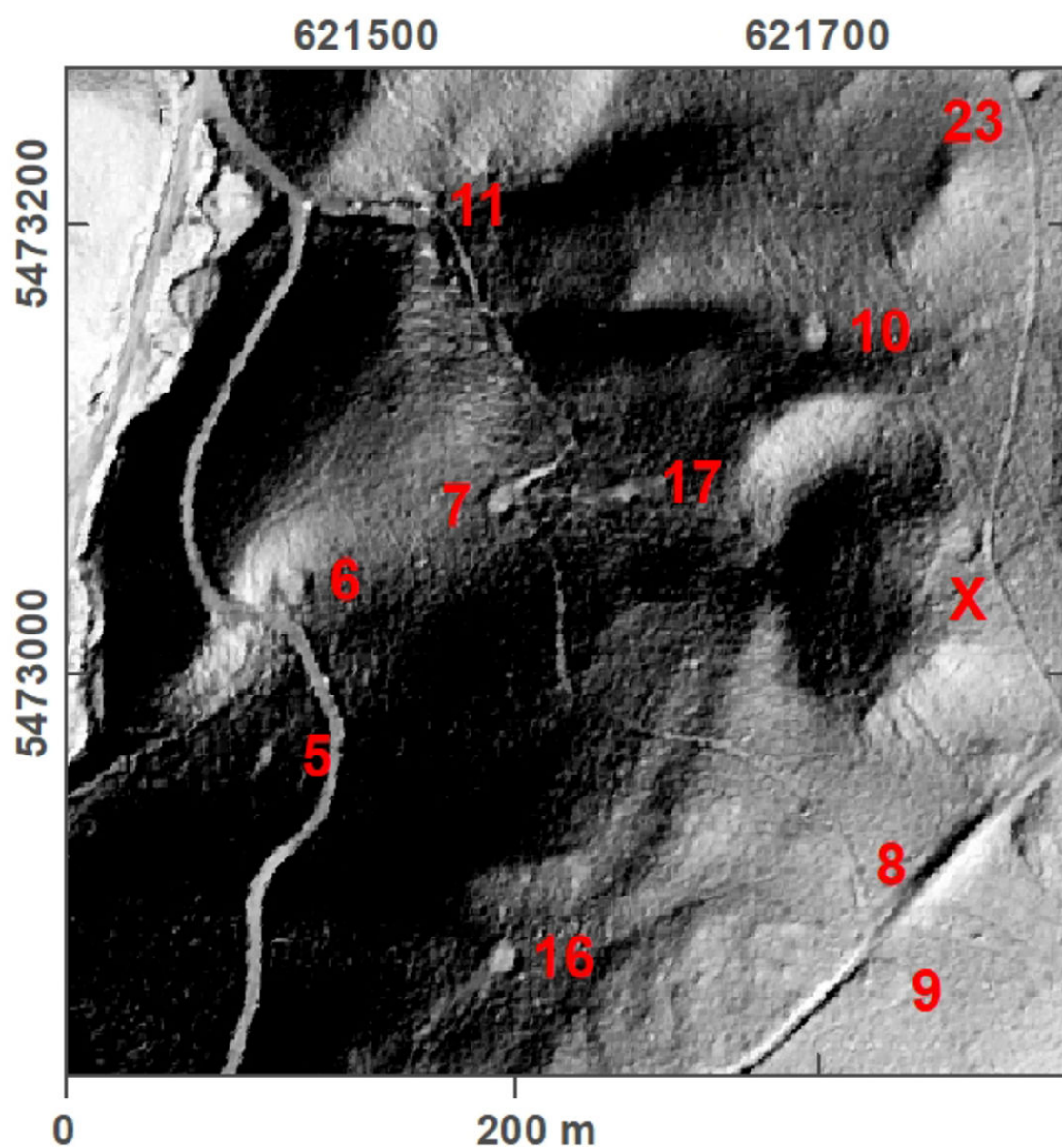
Access map.

After Tomášek et al. 2015.



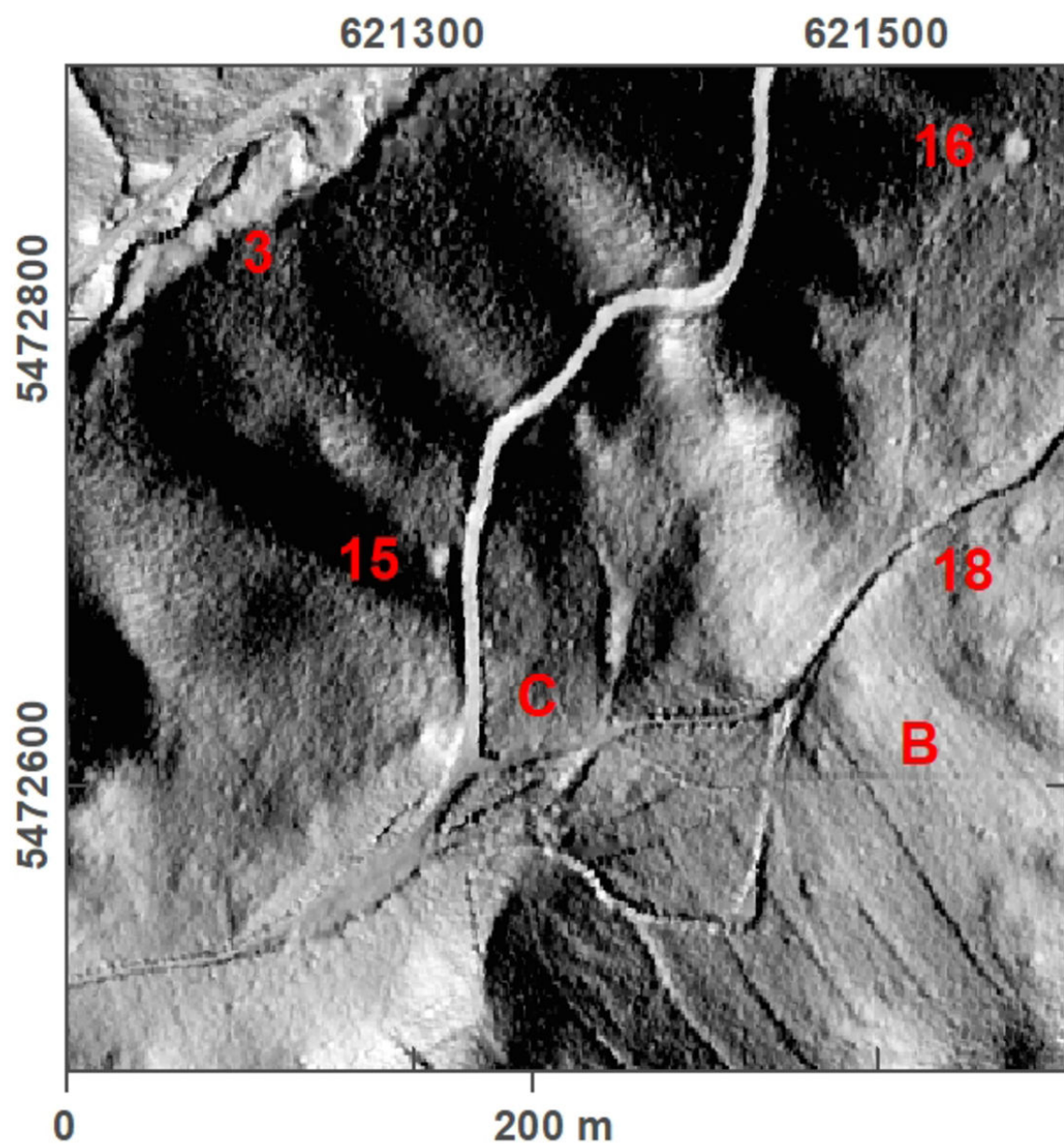
Site plan.

After Tomášek et al. 2015.



Site plan - LLS picture of charcoal production sites.

After Tomášek et al. 2015.



Site plan - LLS picture of charcoal production sites and fields.

After Tomášek et al. 2015.



Bundles of hollow ways in the forest, possibly near a deserted field.

Photo A. Knechtová, 2015.