

# Plav, České Budějovice dist., South Bohemian Region

## Prehistoric barrow cemetery

(1600–50 BC)

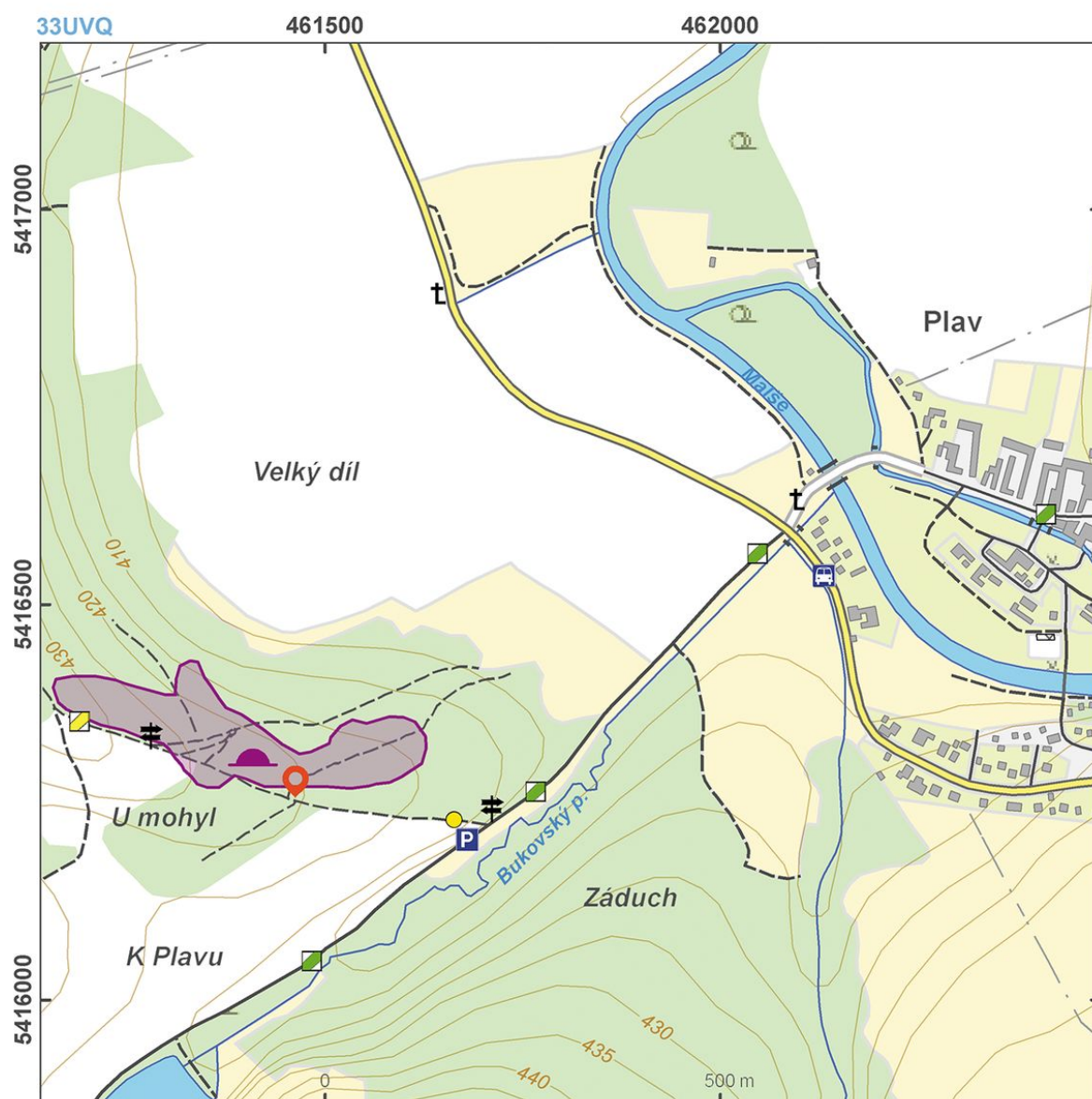


The prehistoric barrow cemetery at Plav was used from the Bronze Age until the La Tène Period. It was completely investigated in the 19th century as one of the first monuments of this type. At this occasion, a plan of the site was drawn, which was not common in the early days of archaeology (its numbers, however, do not match the designations used for the identification of finds). The richest grave (no. 27) contained remains of burial of a prominent male in leather clothing studded with bronze circles.

**References:** Hraše – Stulík 1868; Dubský 1949; Sklenář 1983; Beneš A. a kol. 1999; Jiráň a kol. 2008; Chvojka – Michálek 2011.

**Navigation points:** N 48°53'52.82", E 14°28'27.06".

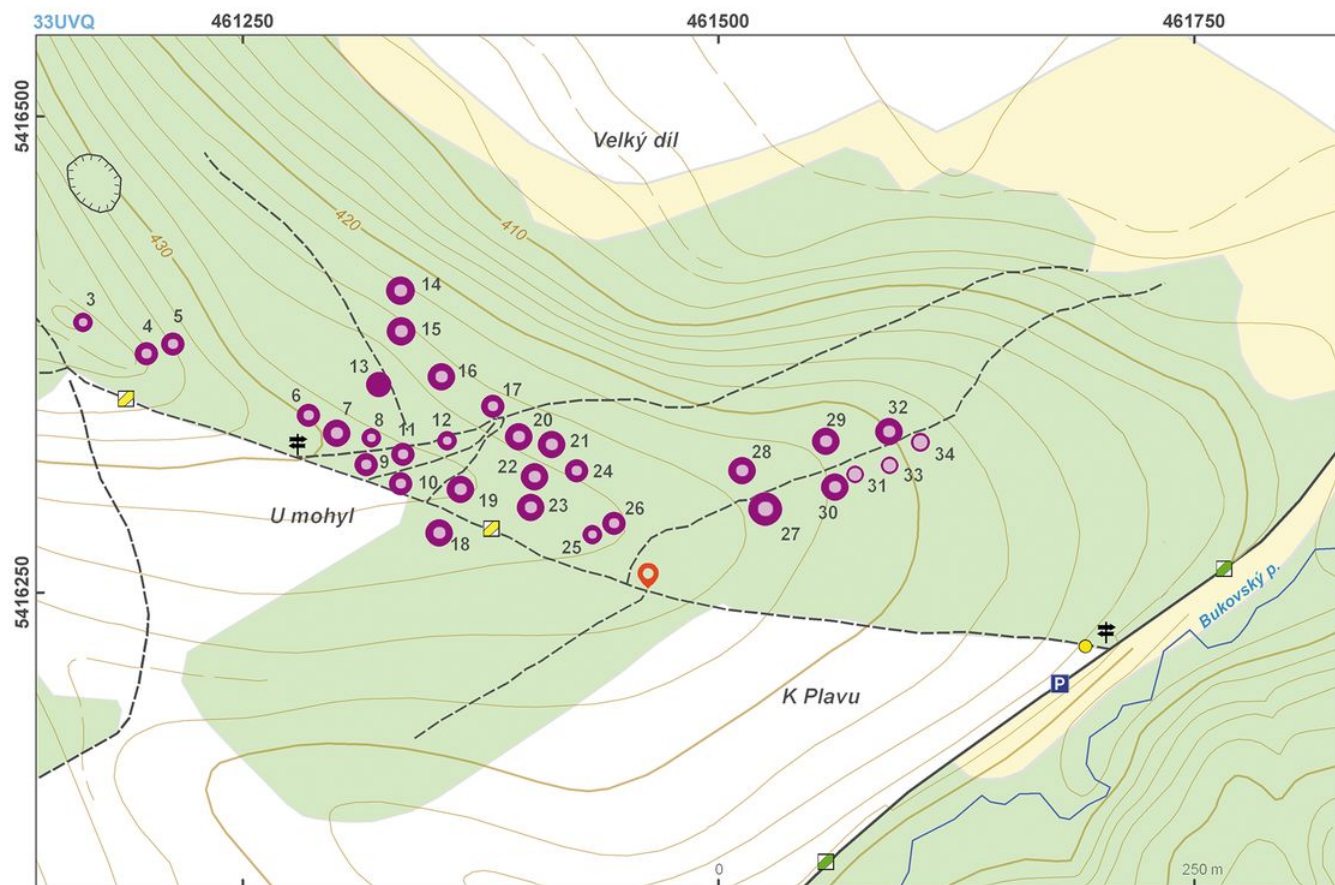
**Map notes:** 3–34 – barrows.



Access map.

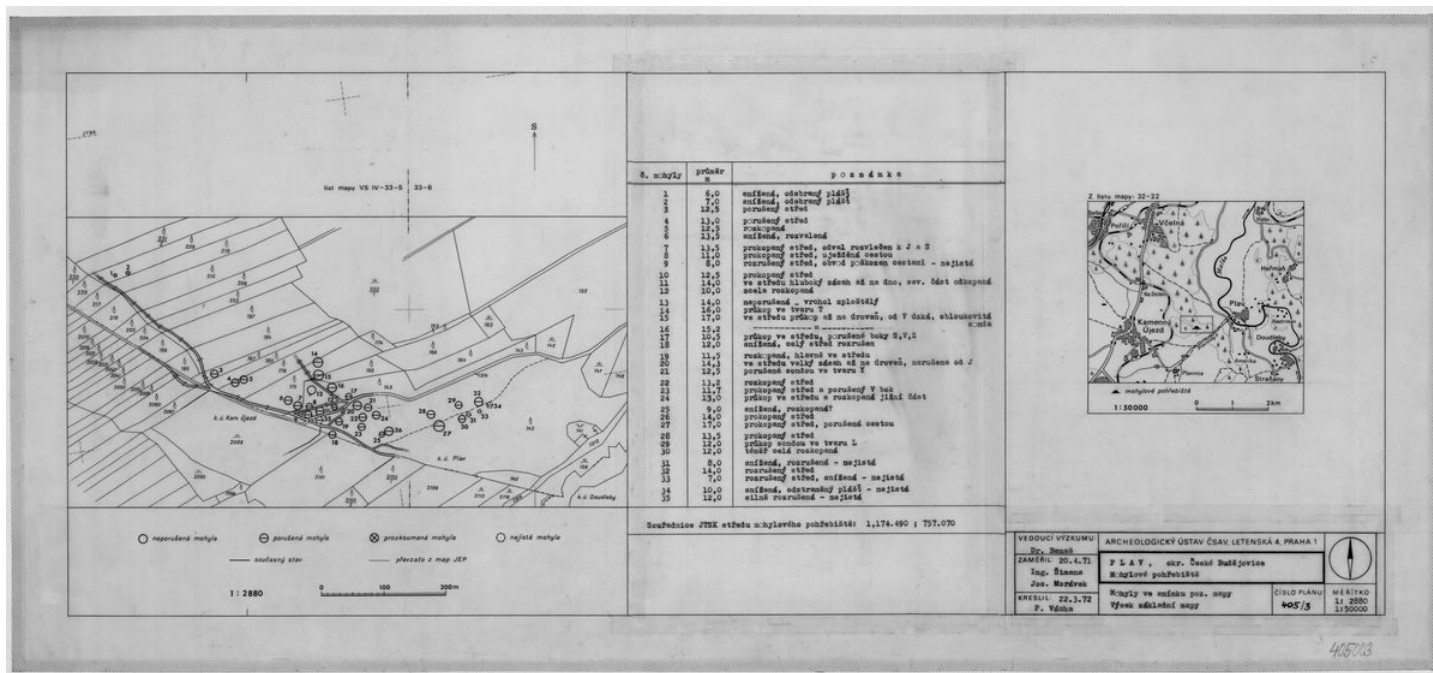
After Kuna et al. 2014.





Site plan.

After Kuna et al. 2014.





A barrow on the cemetery.

Photo Č. Čišecký, 2013.