

Kozojedy, Rakovník dist., Central Bohemian Region

Medieval manorial farm 'Rychvald'

(14th–15th cent.)

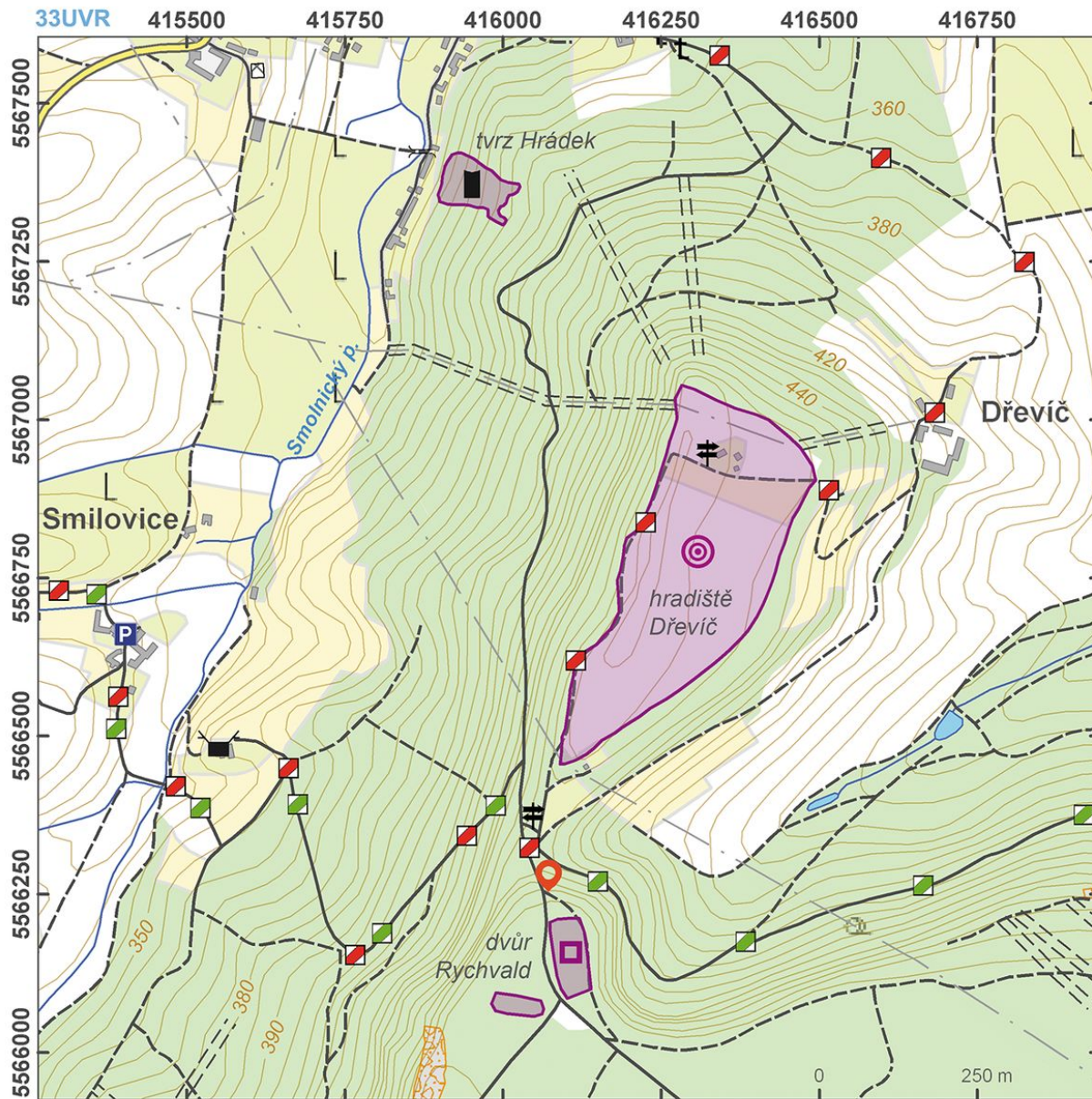


'Rychvald' manorial farm dates to the 14th and 15th centuries. This administrative centre of the domain was probably administered by a feoffee (vassal) for the Poor Clare monastery in Panenský Týnec. The site includes the remains of perimeter walls, a three-compartment house, a granary and other farm buildings.

References: Kypta a kol. 2012.

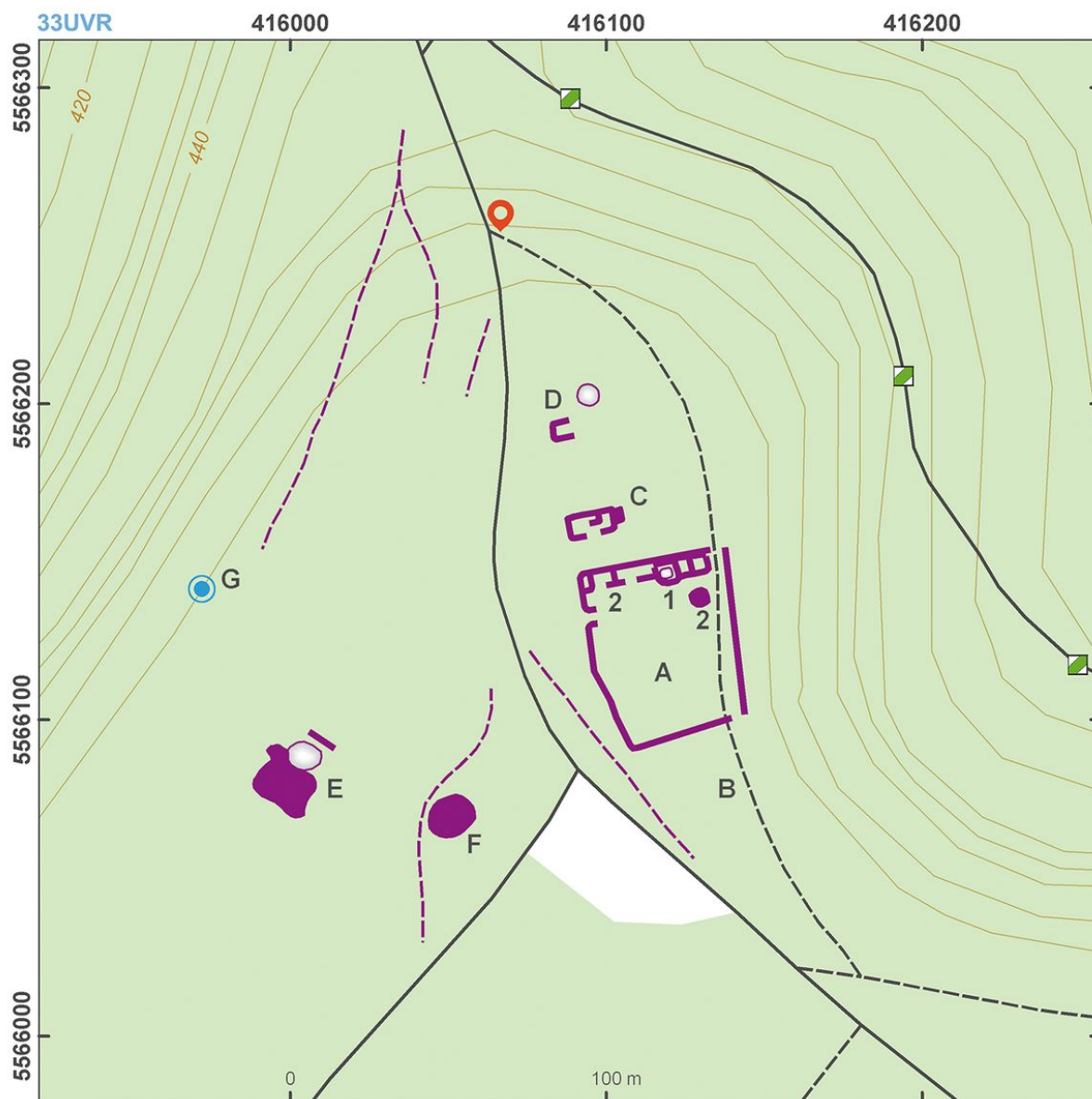
Navigation points: N 50°14'33.02", E 13°49'22.30" ('Rychvald' farm).

Map notes: A – manorial farm with its perimeter walls; B – path (appearing after the demise of the farm); C – one of the houses outside the farm; D – farm building with a cistern or dunghill; E – large storage building or owner residence?; F – a convex feature of an uncertain function; G – spring; 1 – remains of a three-compartment house within the farm; 2 – remnants of other farm structures.



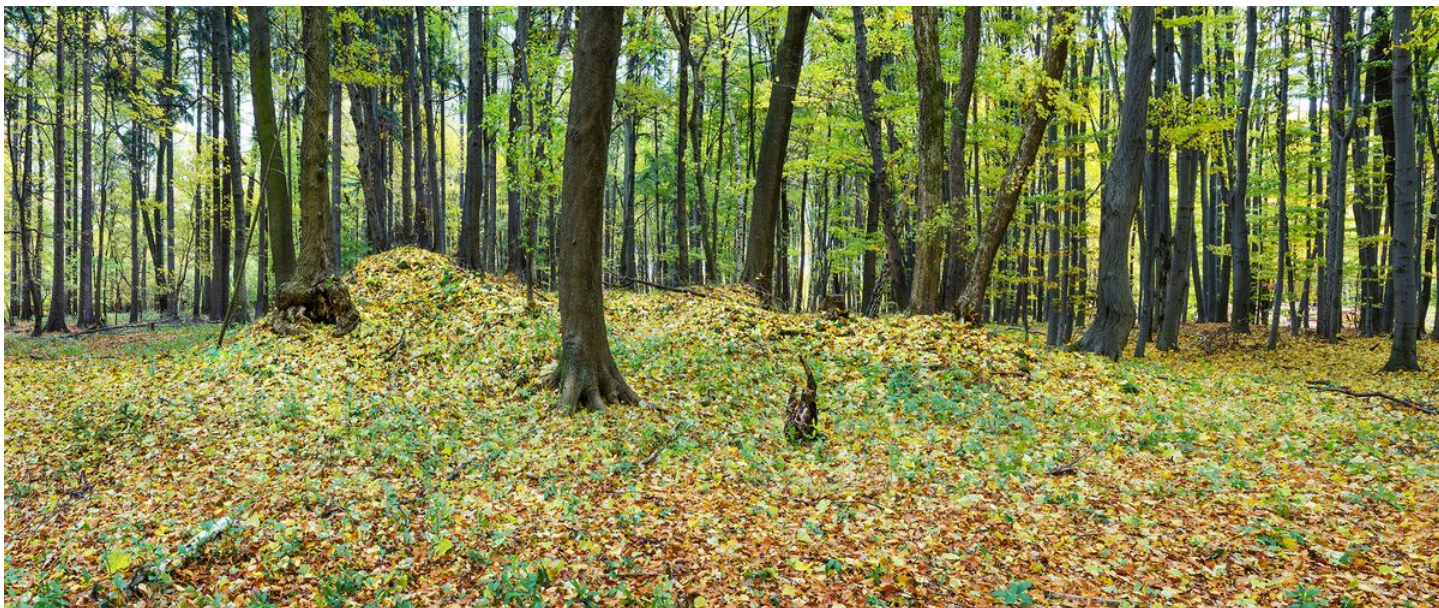
Access map.

After Kuna et al. 2014.



Site plan.

After Kuna et al. 2014.



Two-storey construction to the west of the courtyard.

Photo Z. Kačerová, 2013.



Tripartite house in the courtyard, taken from east.

Photo Z. Kačerová, 2013.



Semisunken part of a house.

Photo Z. Kačerová, 2013.