

# Hosov, Jihlava distr., Vysočina Region

## Deserted medieval village Bradlo

(from the 13th cent. to the 2nd half of the 15th cent.)



The medieval village of Bradlo with the remains of silver mining in its surroundings was mentioned in 1226 for the first time and deserted, out of unknown reasons, most probably in the 2nd half of the 15th century. The house fronts were oriented towards the village green and situated mainly on the south of the stream. In the surroundings, one will find the remains of water reservoirs, hollow ways, field borders and traces of silver mining. Today, the remains of the village are distributed over a surface of 200 × 100 m, the debris of the buildings appear as small elevations in the landscape. Unfortunately, the area was damaged by forestry and treasure hunters.

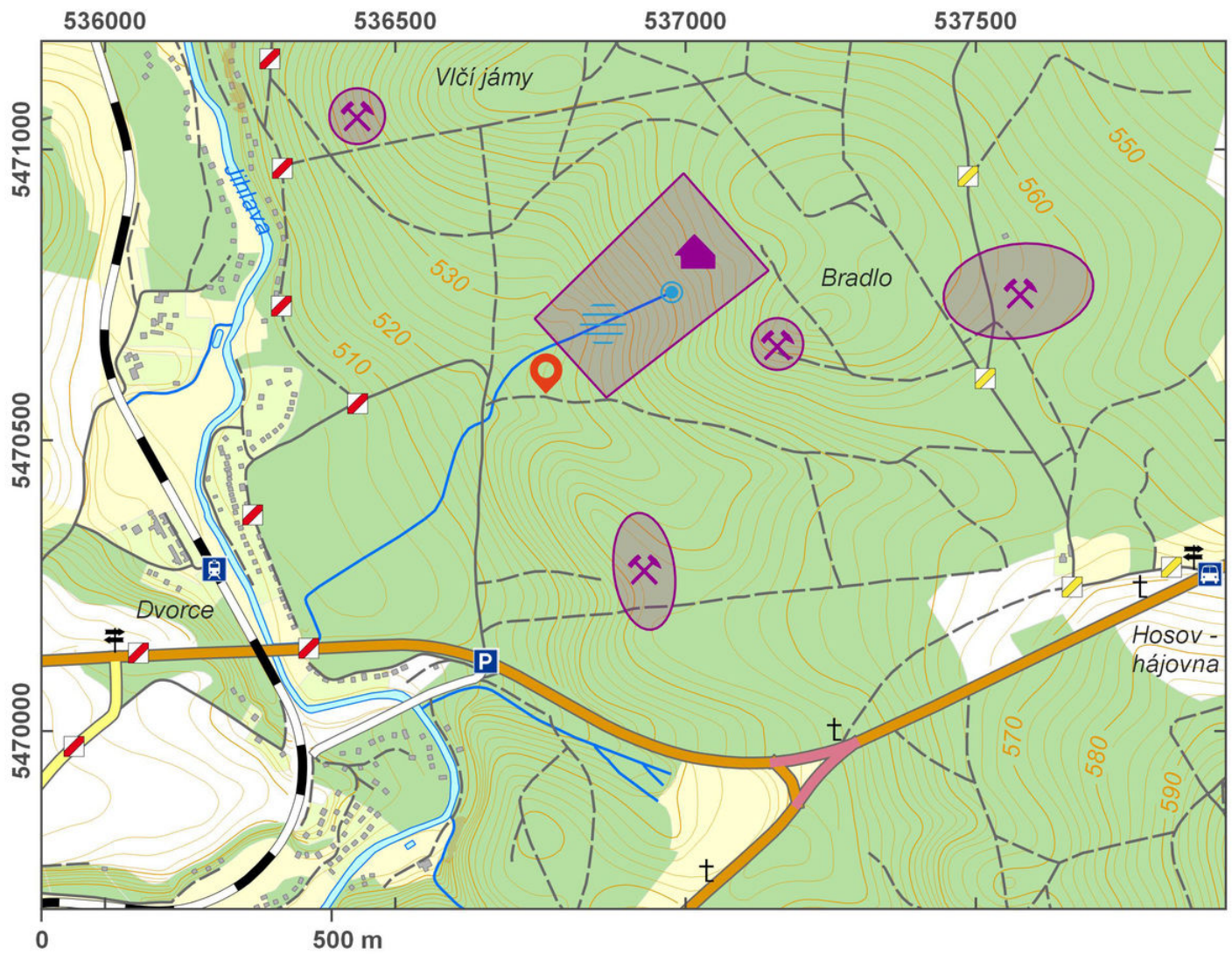
**References:** Nekuda 1961; Bláha 1968; Měřínský 1976.

**Navigation point:** N 49°23'13.07", E 15°30'22.68" (the south-western edge of the village).

**Map notes:** 1 – debris of the buildings; 2 – excavations by detectorists with damaged house foundations; 3 – logging

[https://www.archeologickyatlas.cz/en/lokace/hosov\\_ji\\_ves\\_bradlo](https://www.archeologickyatlas.cz/en/lokace/hosov_ji_ves_bradlo)

and damaged medieval layers with walls; 4 – windthrow showing medieval layers; 5 – traces of mining/mining heaps.



Access map.

After Tomášek et al. 2015.



Debris of a building of the deserted medieval village.

Photo P. Macků, 2015.



The results of forestry at the site.

Photo P. Macků, 2015.