

# Holštejn, Blansko District, South Moravian Region

Prehistoric cave, ruin of the medieval castle of Holštejn and deserted settlement

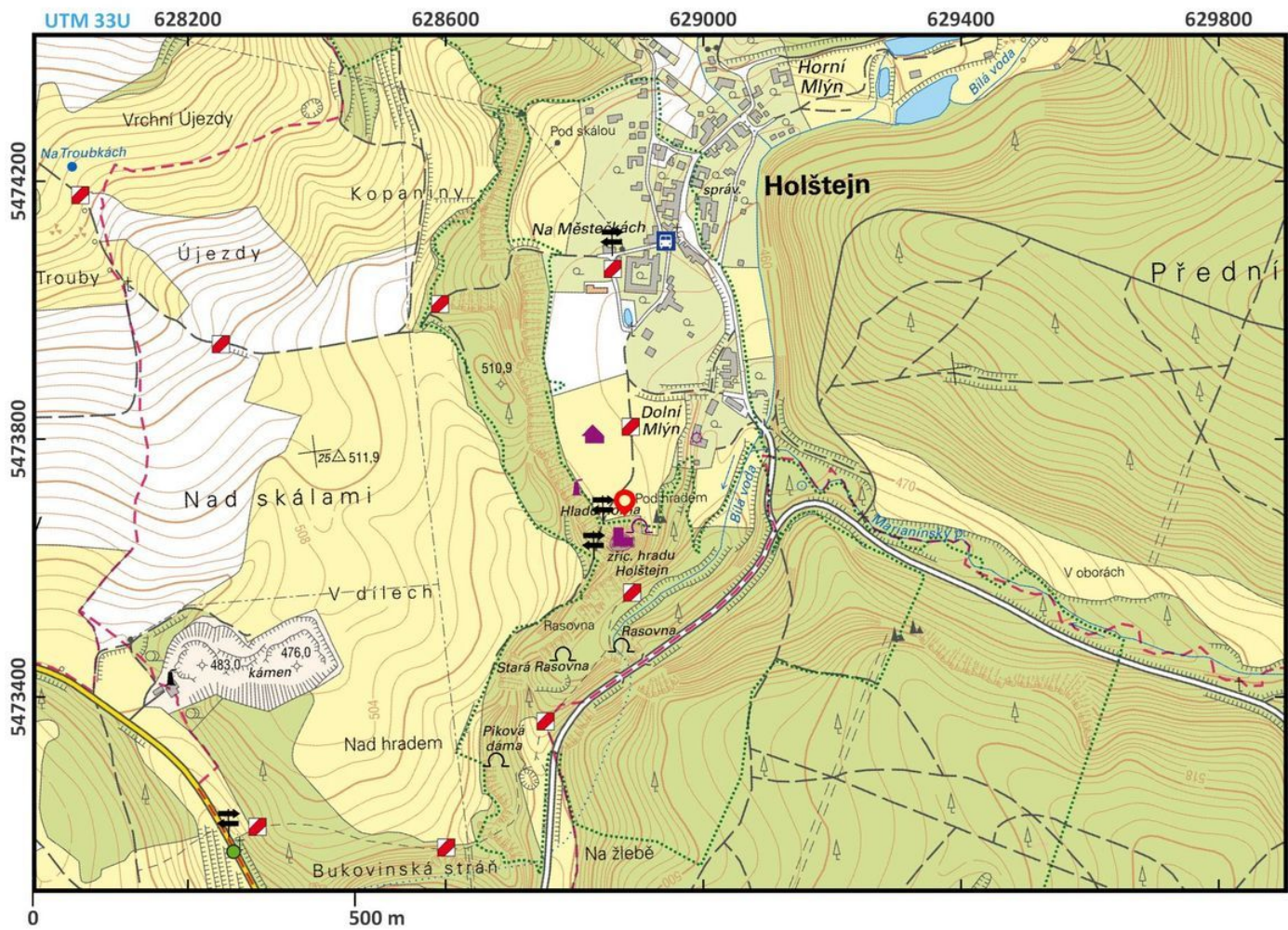
(2900 BC–15th cent. AD)



This vast deserted settlement complex, consisting of the ruins of Holštejn Castle (Hohler Stein in German) shows the remains of a fortified area, a deserted settlement of the same name, clearly visible medieval roads and the remains of lime kilns. Nartman of Čeblovice had the castle built in 1278 and it was deserted in the 15th century. Interestingly, it was connected by a rock corridor to Hladomorna (“dungeon”) Cave, situated directly below it. Although the cave was used in prehistory, which is witnessed by finds from the Eneolithic (Corded Ware culture), it is mostly connected with the Middle Ages when it was used as a prison.

**References:** Černý 1979; Hasoň – Koudelka 2015; Hosák – Zemek a kol. 1981; Štětina 2016.

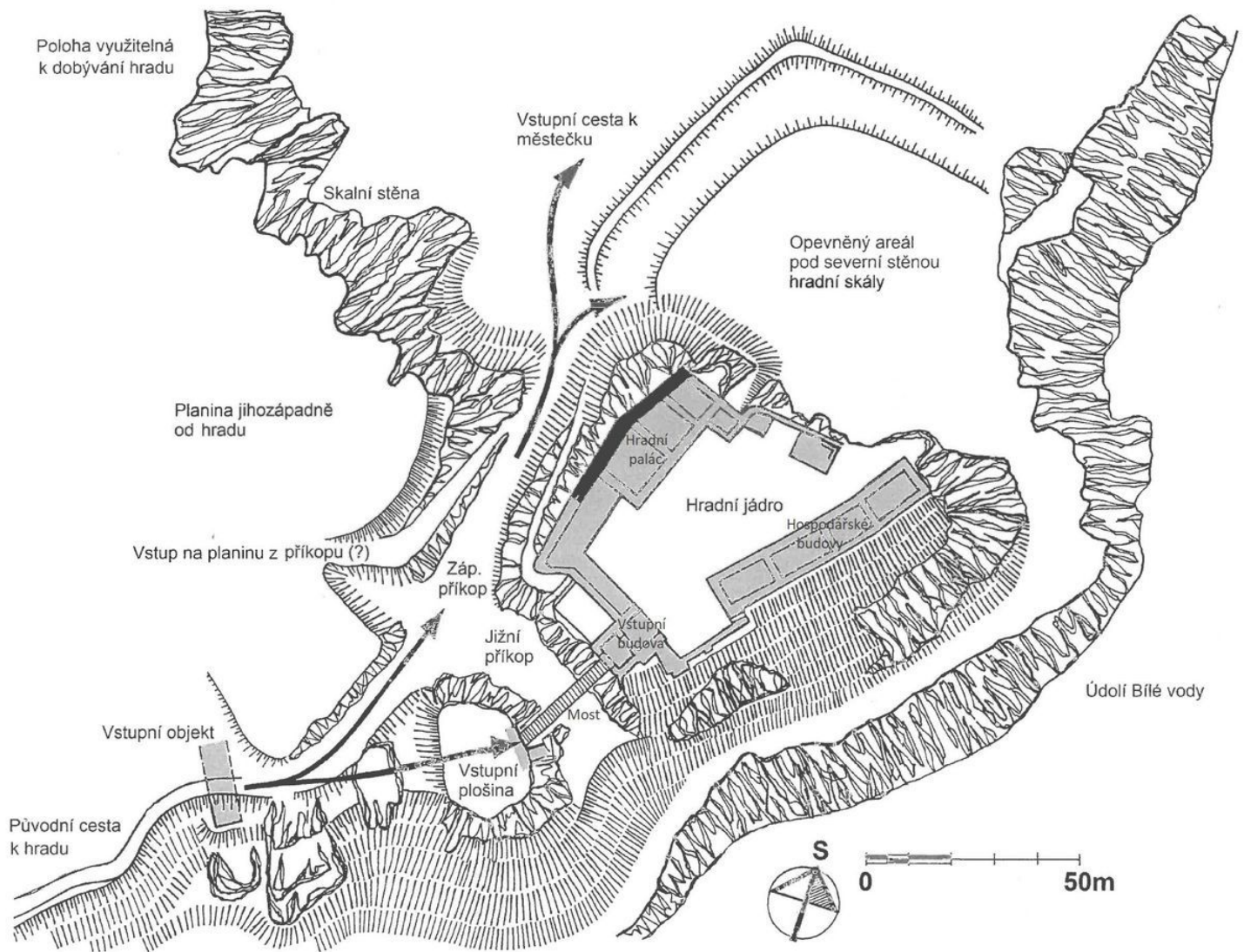
**Navigation point:** N 49°24'08.1", E 16°46'35.1" (below the rock wall and in front of Hladomorna Cave).



Access map.

Edited by A. Gašpar, 2020.





Site plan.

After Štětina 2016.





View of the rock spur from the north-west with a high rock wall, which exceeds 30 metres; on the right is the western ditch carved into the stone.

Photo V. Kolomazníček, 2019.



An artificially modified crevice below the west part of the castle core; on the left, there are the remains of the south-western castle corner, which is today the dominant feature (height of the ruin: 8.5 m).

Photo V. Kolomazníček, 2019.





View of the castle ruin of Holštejn from the west; on the left there is the elevated core of the castle with the remains of the south-western corner; the area on the right was a small outer bailey, which with a drawbridge, served as an entrance to the castle.

Photo V. Kolomazníček, 2019.



Overall view of the centre of the castle with the entrance area; the south-western (on the left) and the south-eastern (on the right) castle corners are visible.

Photo V. Kolomazníček, 2019.





Overall view from the south of the deserted settlement (Na Městečku site) from the former residential building of the castle.

Photo V. Kolomazníček, 2019.



The exit of the alleged passage from Holštejn Castle to Hladomorna Cave.

Photo V. Kolomazníček, 2019.