

Březí u Říčán, Prague-East dist., Central Bohemian Region

Prehistoric hillfort

(700–400 BC)

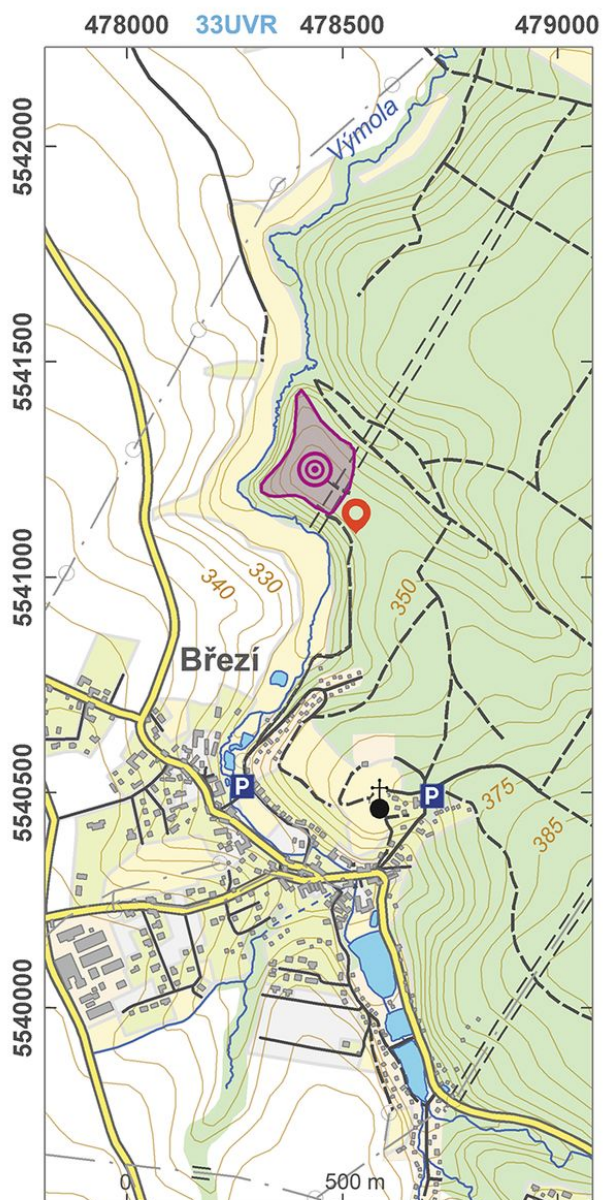


A small Hallstatt Period hillfort, probably used by the local elite, at a typical location on a promontory above a stream. Preserved today are two ditches and two massive banks – the remnants of wood and earth ramparts. The hillfort was apparently destroyed by fire.

References: Kudrnáč 1962.

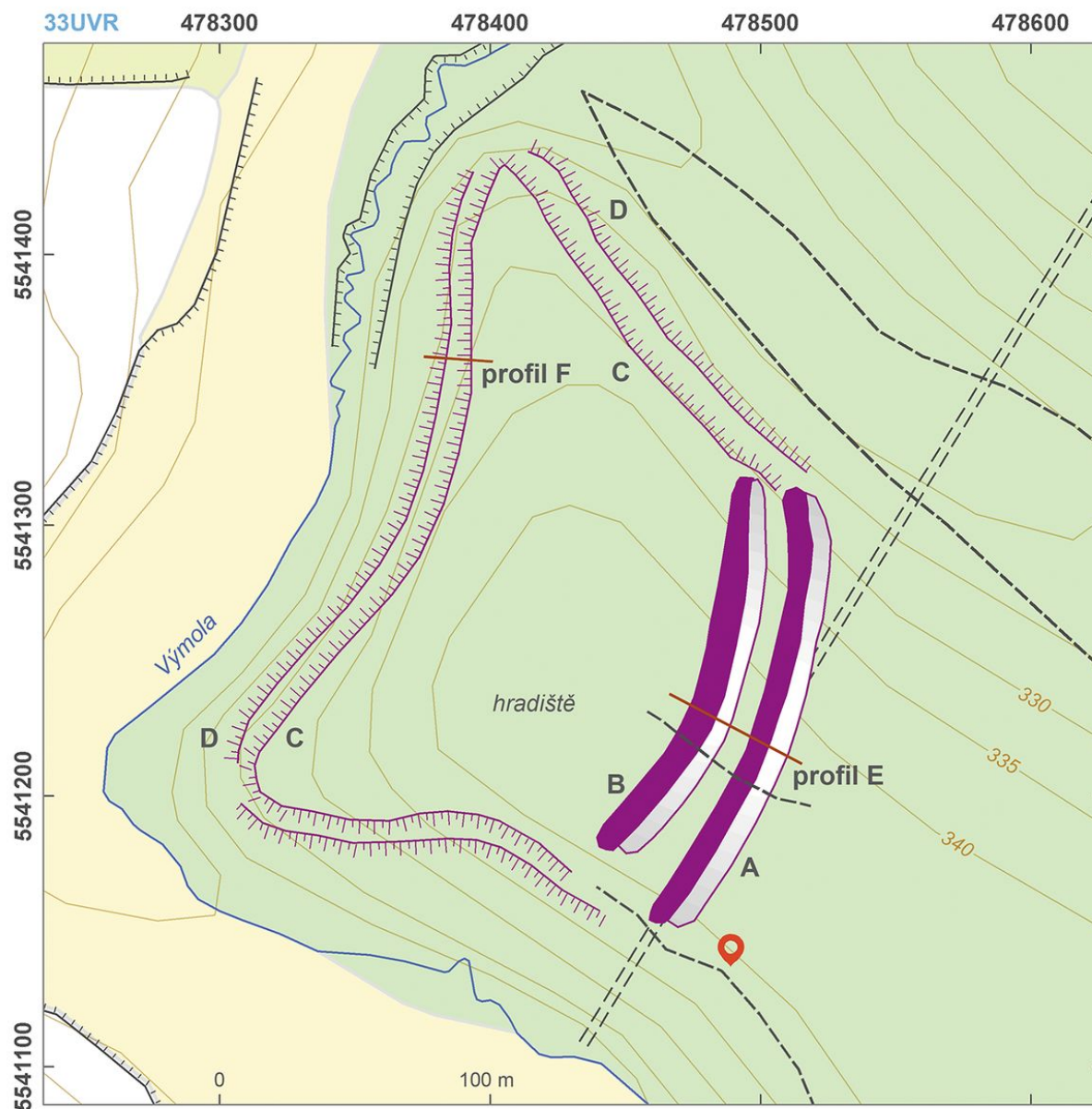
Navigation points: N 50°01'19.69", E 14°41'58.76" (northeast).

Map notes: A – outer bank with ditch; B – inner bank with ditch; C – edge of the steep slope of the promontory; D – terrace around the plateau, probably the remains of a perimeter ditch; E–F – locations of the profiles shown in the text.



Access map.

After Kuna et al. 2014.



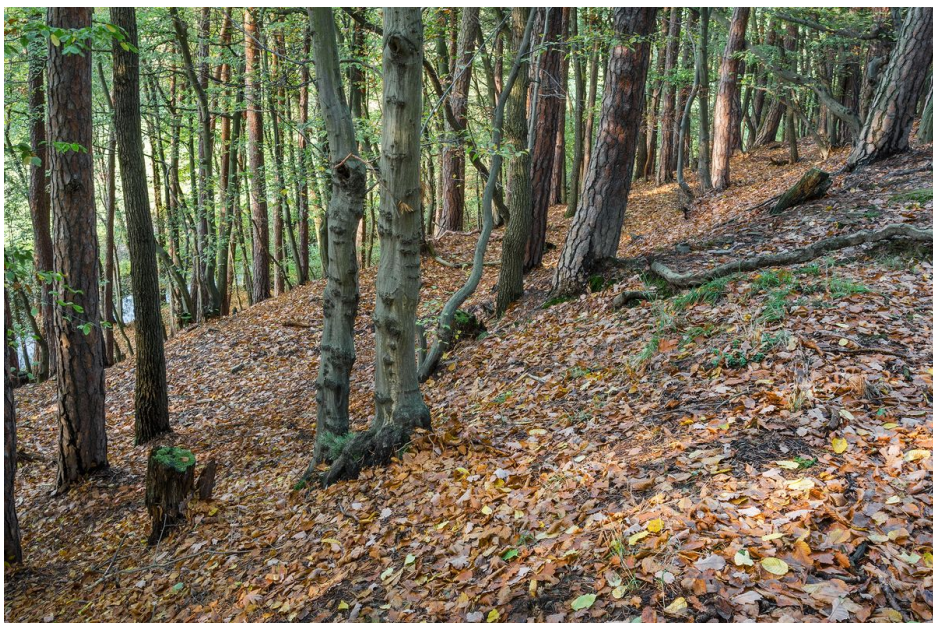
Site plan.

After Kuna et al. 2014.



Outer bank of the hilltop. the hillfort.

Photo Z. Kačerová, 2014.



Terrain edge below the hillfort; probably remains of fortification.

Photo Z. Kačerová, 2014.



Area's edge with biker tracks.

Photo Z. Kačerová, 2014.



Stone destruction on the bank crown.

Photo Z. Kačerová, 2014.



View of the hillfort across Výmola rivulet.

Photo J. Škoda, 1961. Archives of the IoA, FT-27489.



View of the hillfort across Výmola rivulet.

Photo K. Bednařík, 1961. Archives of the IoA, FT-24438.



Hillfort's bank.

Photo K. Bednařík, 1961. Archives of the IoA, FT-24430.



J. Kudrnáč during survey of the hillfort's moat.

Photo K. Bednařík, 1961. Archives of the IoA, FT-24445.