

Boskovice, Blansko distr., Southern Moravia Region

Medieval castle Boskovice

prehistory, Middle Ages, modern period

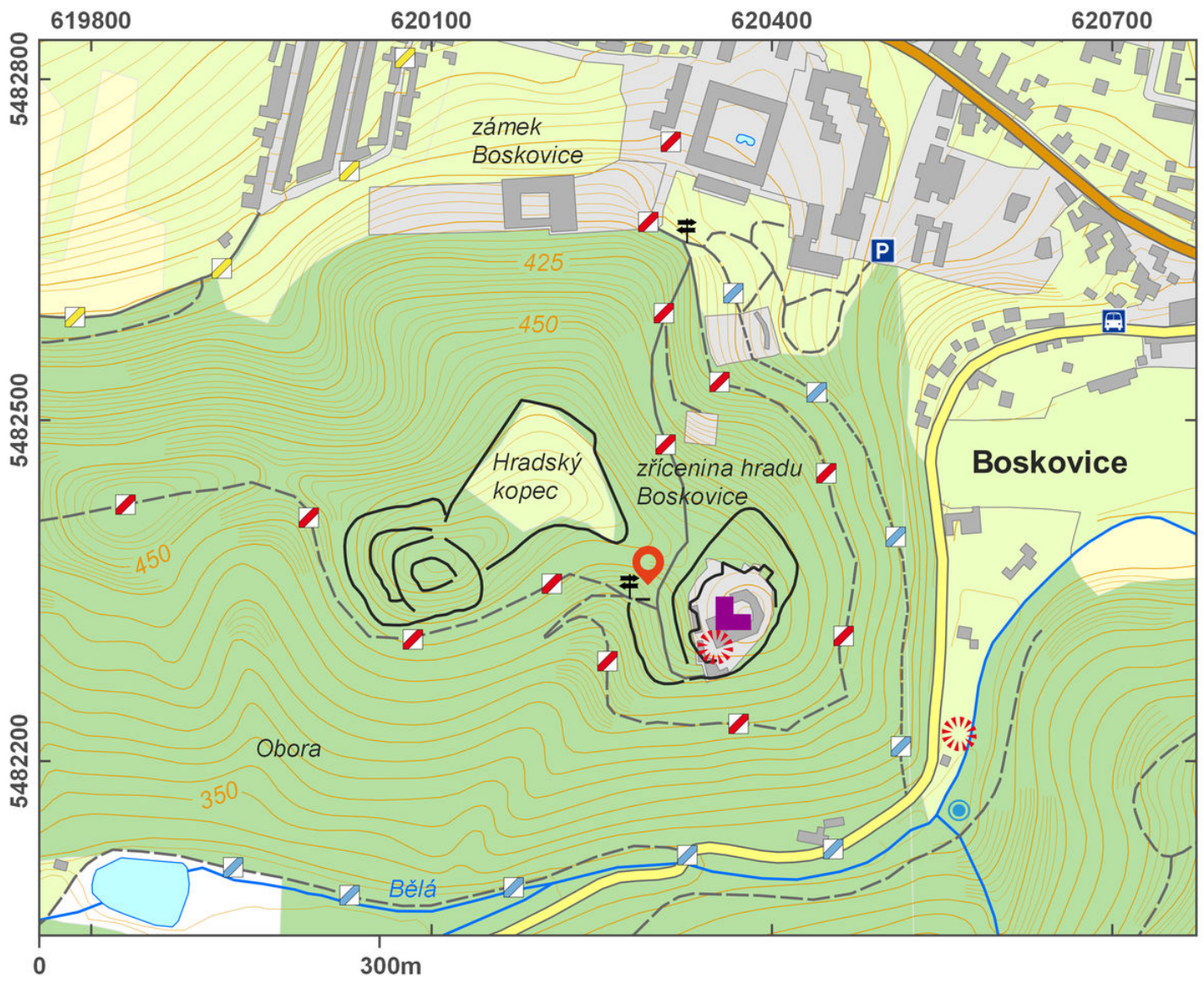


Boskovice Castle counts among the most important medieval residences of the nobility in Moravia. The first written mention are dated back to the 14th century. The area consists of an upper ward and a part called 'bastion'. Amidst the vast fortification, there are also the remains of a Bronze Age hillfort, which was occupied in the Hallstatt period. Parts of the prehistoric fortification were reused to build the medieval castle. The upper ward is surrounded by a zwinger with open bastions facing the entrance area; typologically, this castle belongs to the castles with mantlet wall. The site has not been archaeologically researched; therefore the dating of individual building phases remains unclear.

References: Samek 1994; Plaček 2001; Čížmář 2004; Duková 2014; Štětina 2007.

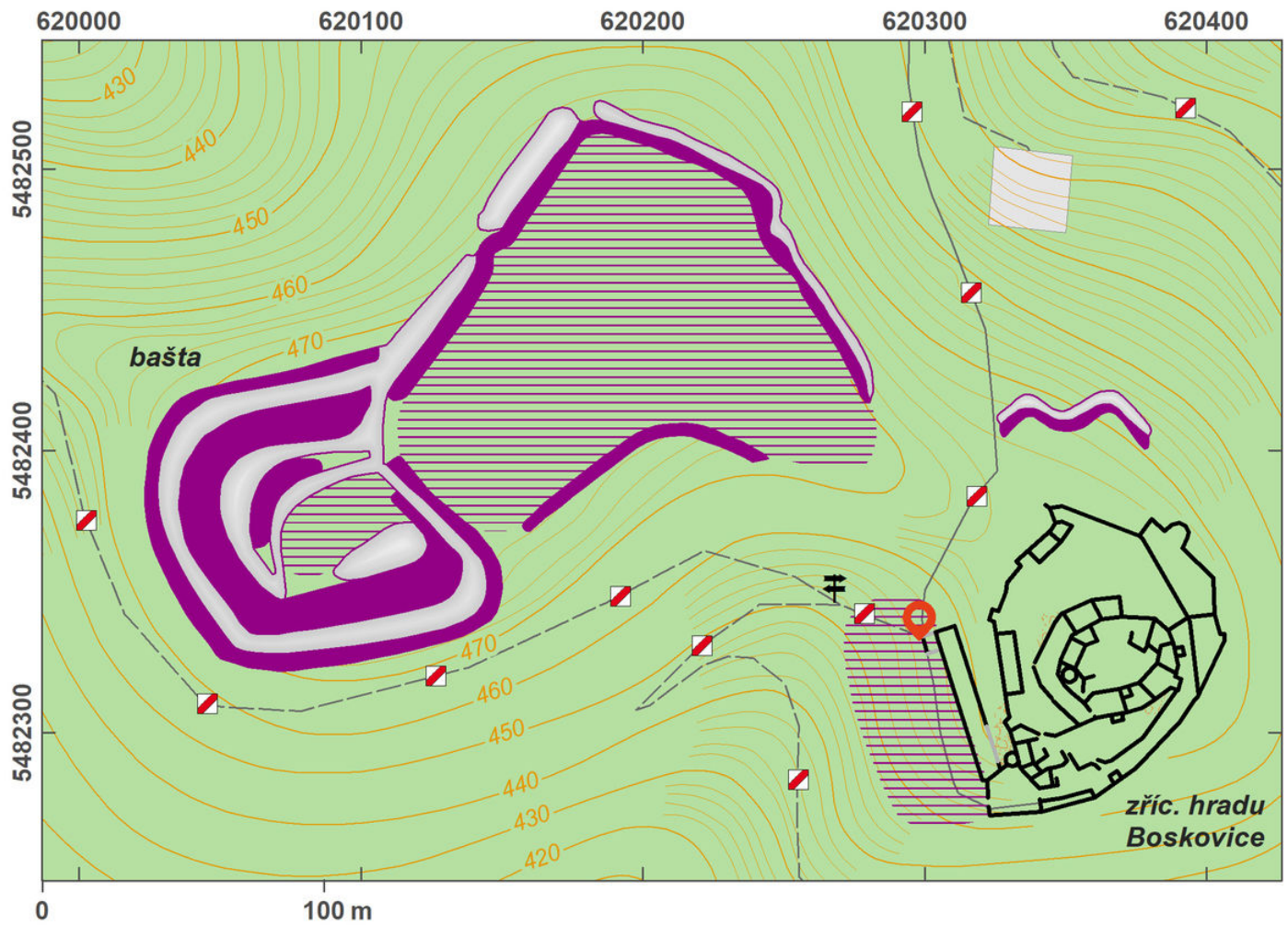
Navigation point: N 49°28'54.02", E 16°39'38.10".

https://www.archeologickyatlas.cz/en/lokace/boskovice_bk_hrad



Access map.

After Tomášek et al. 2015.



Site plan.

After Tomášek et al. 2015.



View of the bastion with parts of the ditch and earthwork.

Photo J. Totusková, 2015.



View of the mantlet wall.

Photo J. Totusková, 2015.



Aerial view of the castle from the west.

Photo M. Bálek, 1997.



Aerial view of the castle from the south-east.

Photo M. Bálek, 1999.