

# Blučina, Brno-Country distr., Southern Moravia Region

## Prehistoric hillfort Cezavy

1900–1250 BC

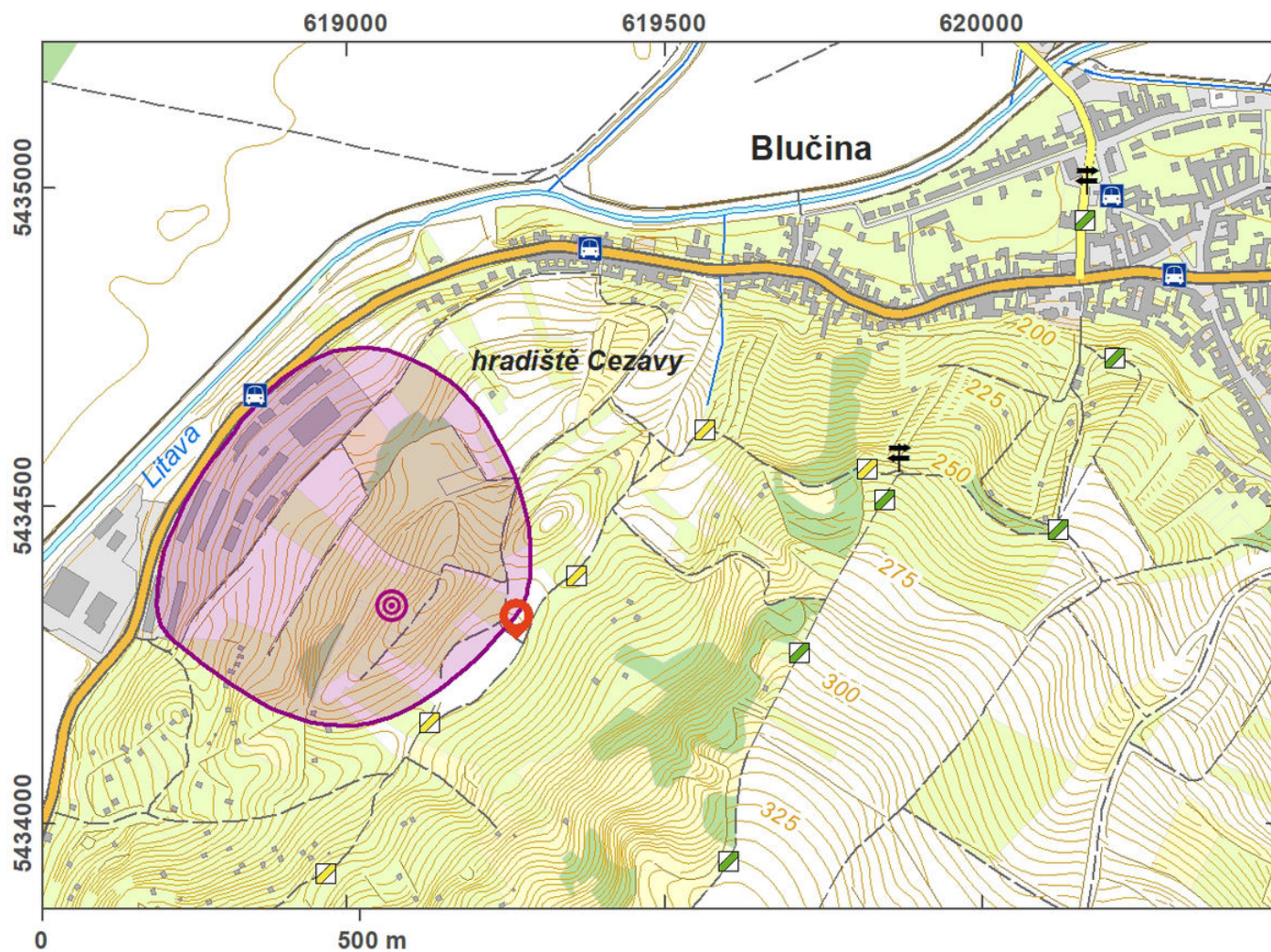


Hillfort, known multi-cultural site with finds from almost twenty Bronze hoards and many human skeletal remains. The first finds were made in the 1920s; after World War II, 18 sessions of systematic excavations followed uncovering settlements of the Únětice, Věteřov and Velatice cultures (Late and Final Bronze Ages). Among the most important was the find of a chieftain's grave from the Migration Period. Today, two terraces are visible – an outer one with a fortification composed of a moat (8–11 m broad, 2.5 m deep) and the mighty debris of a stone wall.

**References:** Tihelka 1957; Sklenář – Sklenářová – Slabina 2002; Čížmář 2004; Salaš 2012.

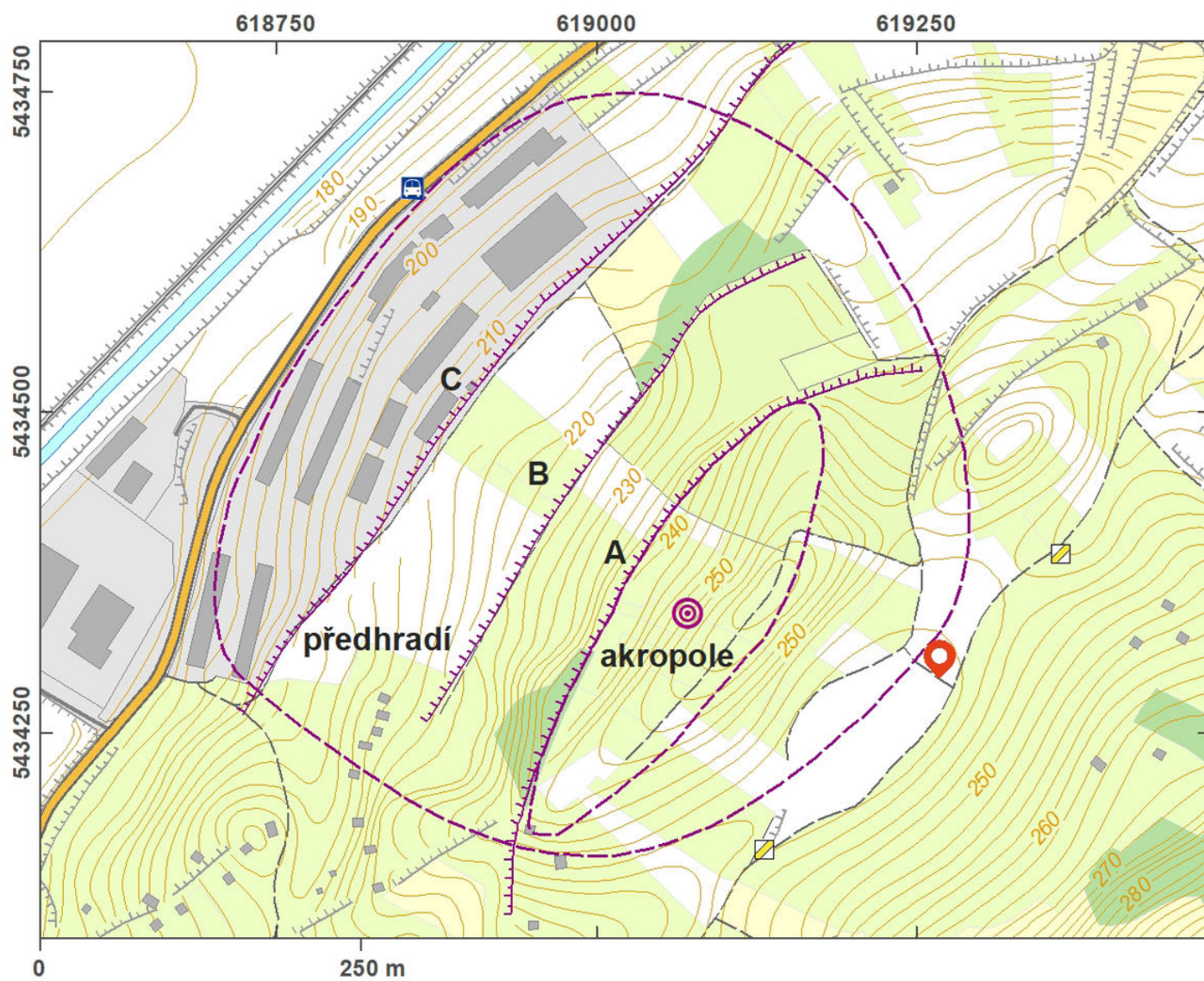
**Navigation point:** N 49°03'01.87", E 16°37'56.28".

**Map notes:** A–C – terraces.



Access map.

After M. Tomášek et al. 2015.



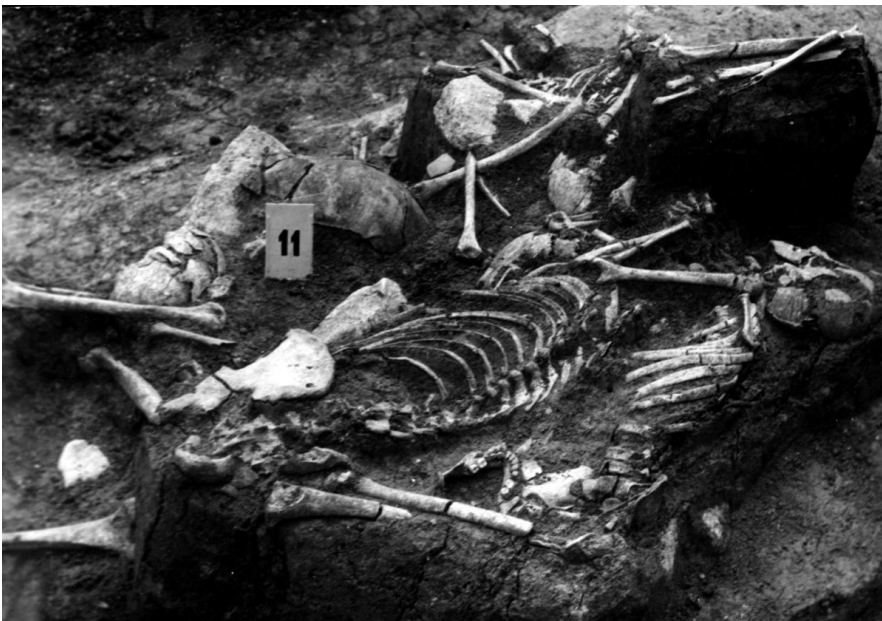
Site plan.

After M. Tomášek et al. 2015.



Aerial view of the hillfort from the south-east.

Photo M. Bálek, 1998.

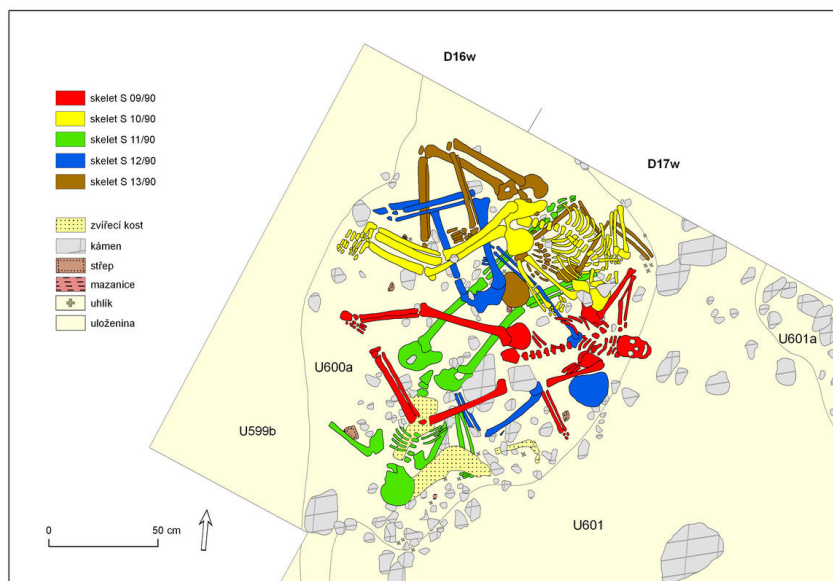


Concentration of skeletons in Karel Tihelka's excavation.



A bronze hoard found during M. Salaš's excavation in 1986.

Photo Archive Moravian Museum Brno.



Cezavy: example of a concentration of human skeletons in the excavation of 1990.

After M. Salaš.