

Bílovice, Prostějov distr., Olomouc Region

Prehistoric hillfort Hrad u Bílovic

(3700–3200 BC)

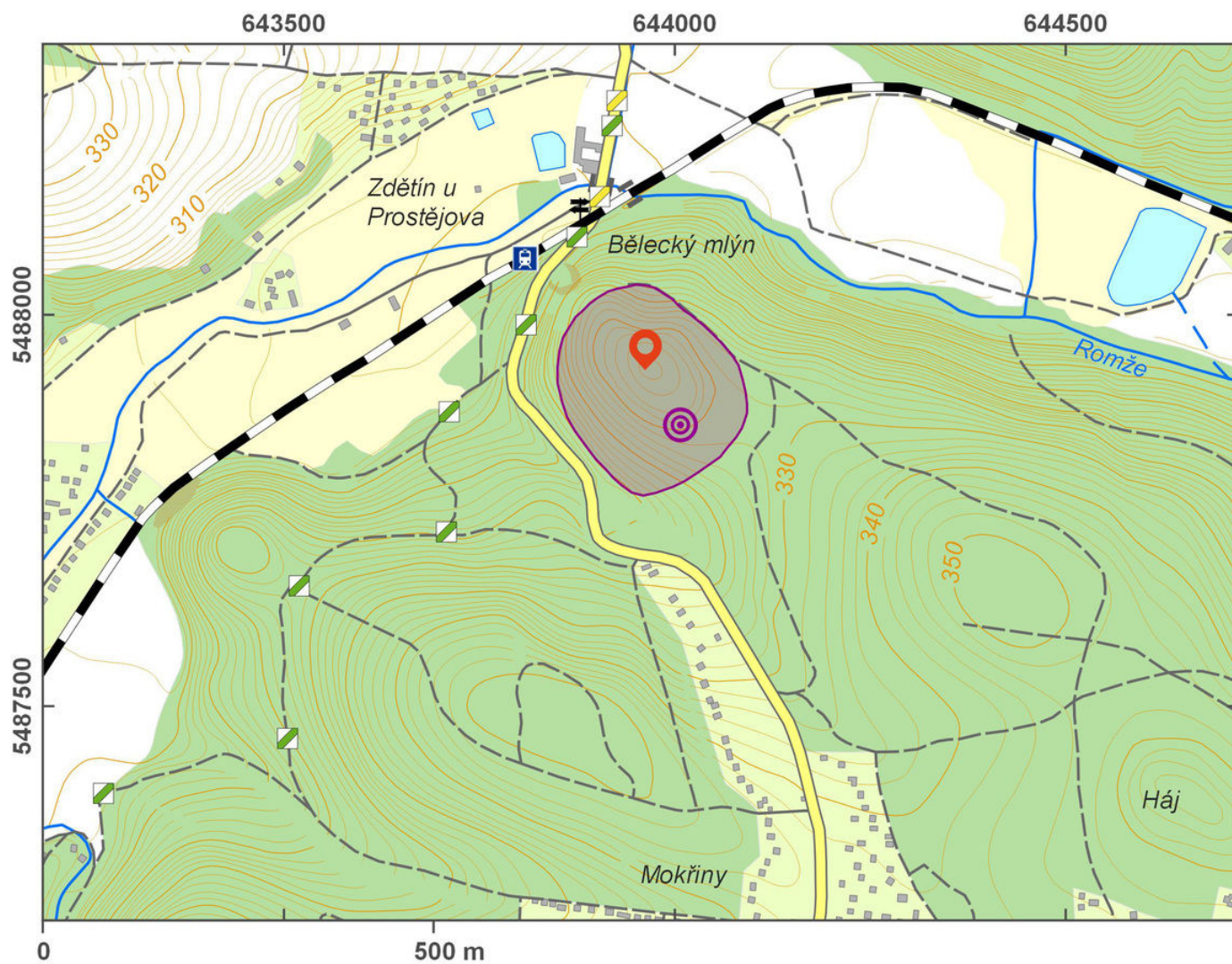


This prehistoric fortified area in a strategic position on a spur above the Romže River features a mighty earthwork and two ditches. According to the results of the archaeological excavation, this fortification stems from the Middle Neolithic, but the site was used in later periods as well.

References: Houdek 1884; Čižmář 2004; Šmíd 2010.

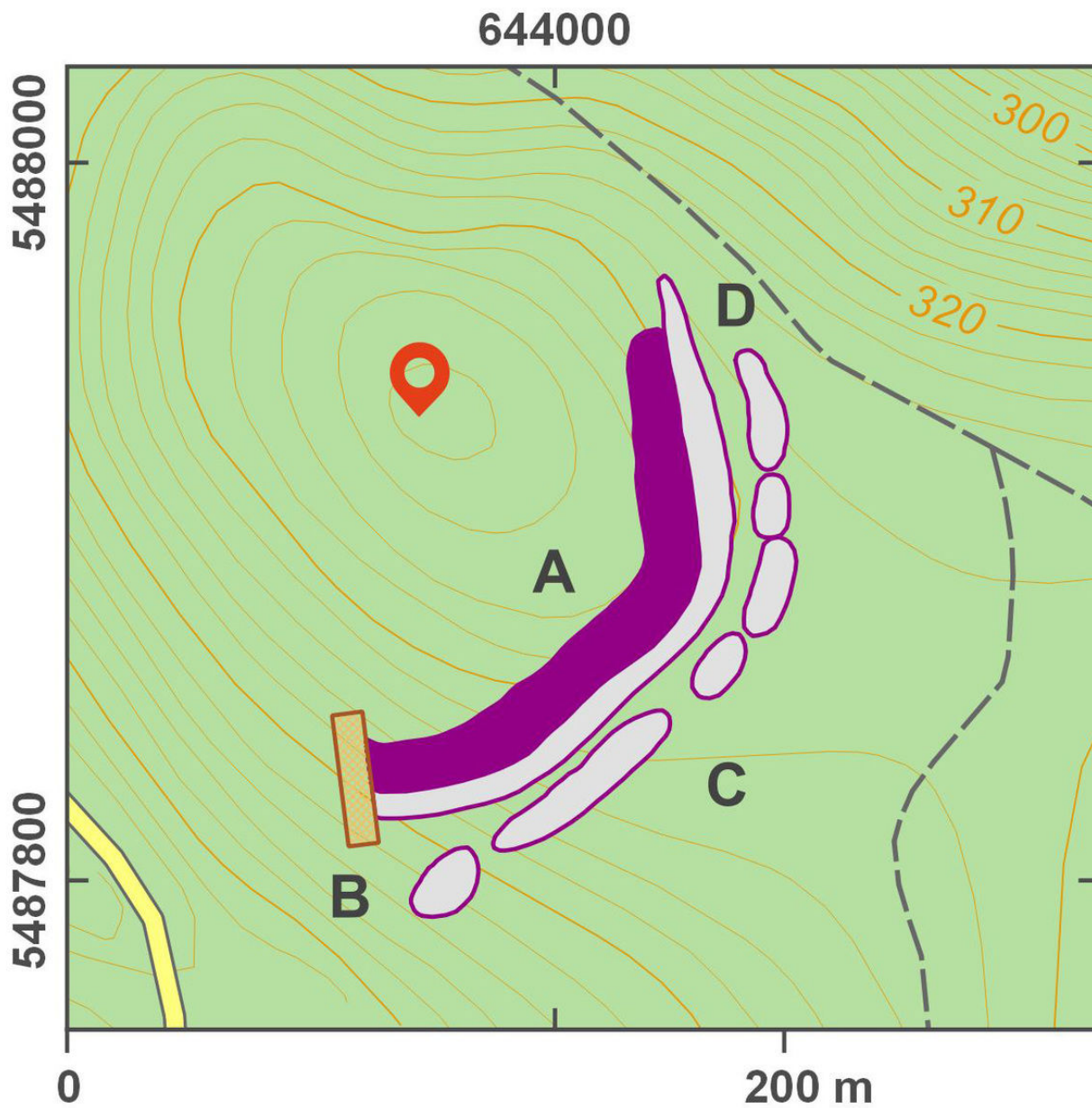
Navigation point: N 49°31'36.91", E 16°59'21.92" (top of the hill 338 m).

Map notes: A – earthwork; B – inner ditch; C – outer ditch; D – possible position of the entrance.



Access map.

After Tomášek et al. 2015.



Site plan.

After Tomášek et al. 2015.



Rampart and inner ditch, view from the north.

Photo P. Šlězár.