

Třebel and surroundings, Tábor dist., South Bohemian Region

Battlefield of Třebel

(1647)

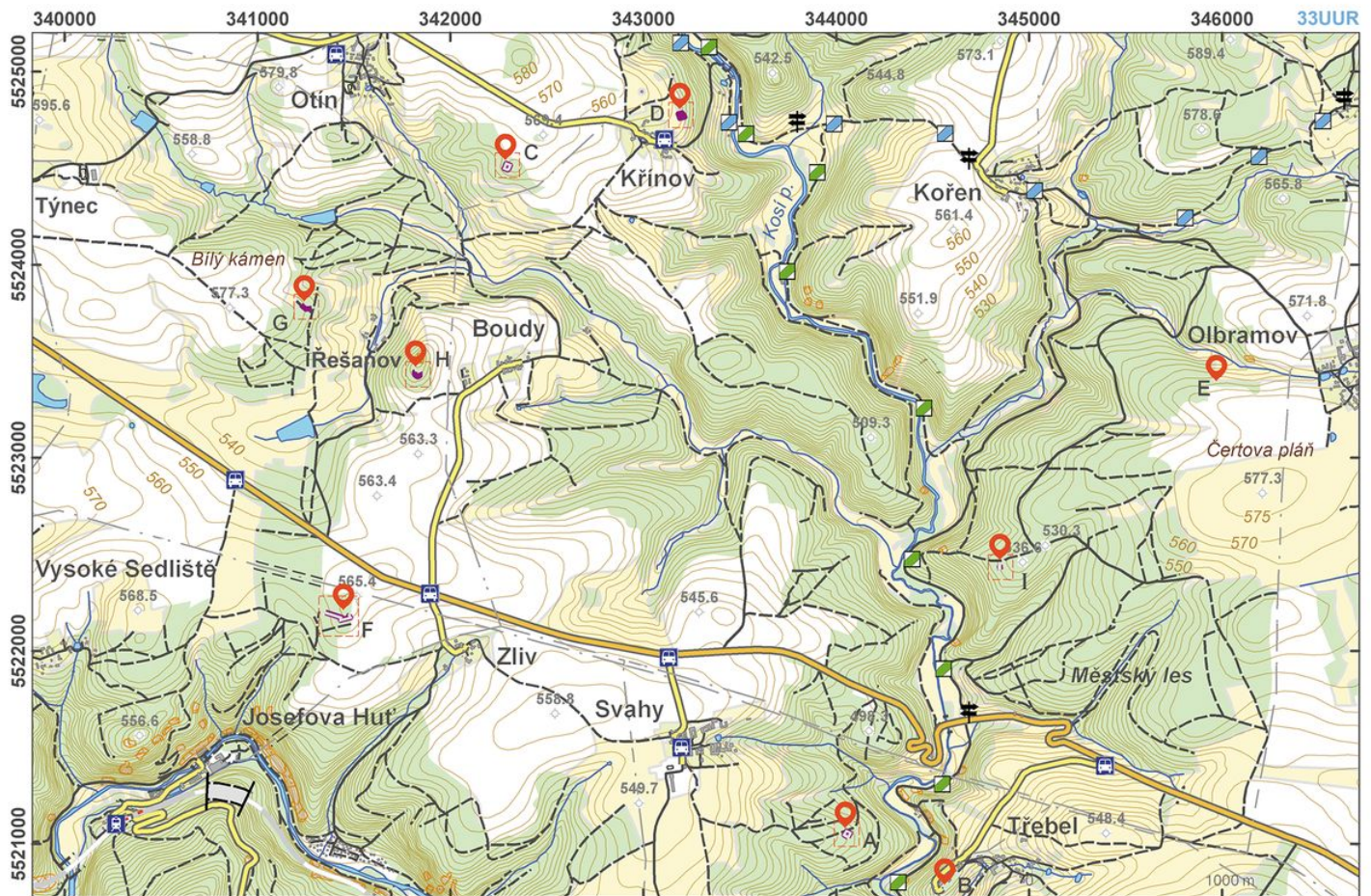


The surrounding area of the Třebel Castle became the stage of a battle between the Swedish and Austrian Imperial armies in 1647. Although the attack of the Imperial forces on the Swedes, who had previously taken Třebel Castle, was not as successful as anticipated, two weeks later the Swedish army left the country, their campaign ending in absolute failure. Contemporary written sources and vedutes provide a wealth of information on the appearance of field camps in the Thirty Years' War. The remains of the Imperial redoubt and artillery positions, the Swedish camp and other field fortifications are distributed over an area of 50 km² around Třebel. One of the redoubts was also reconstructed.

References: Rožmberský 1992; Matoušek 2006.

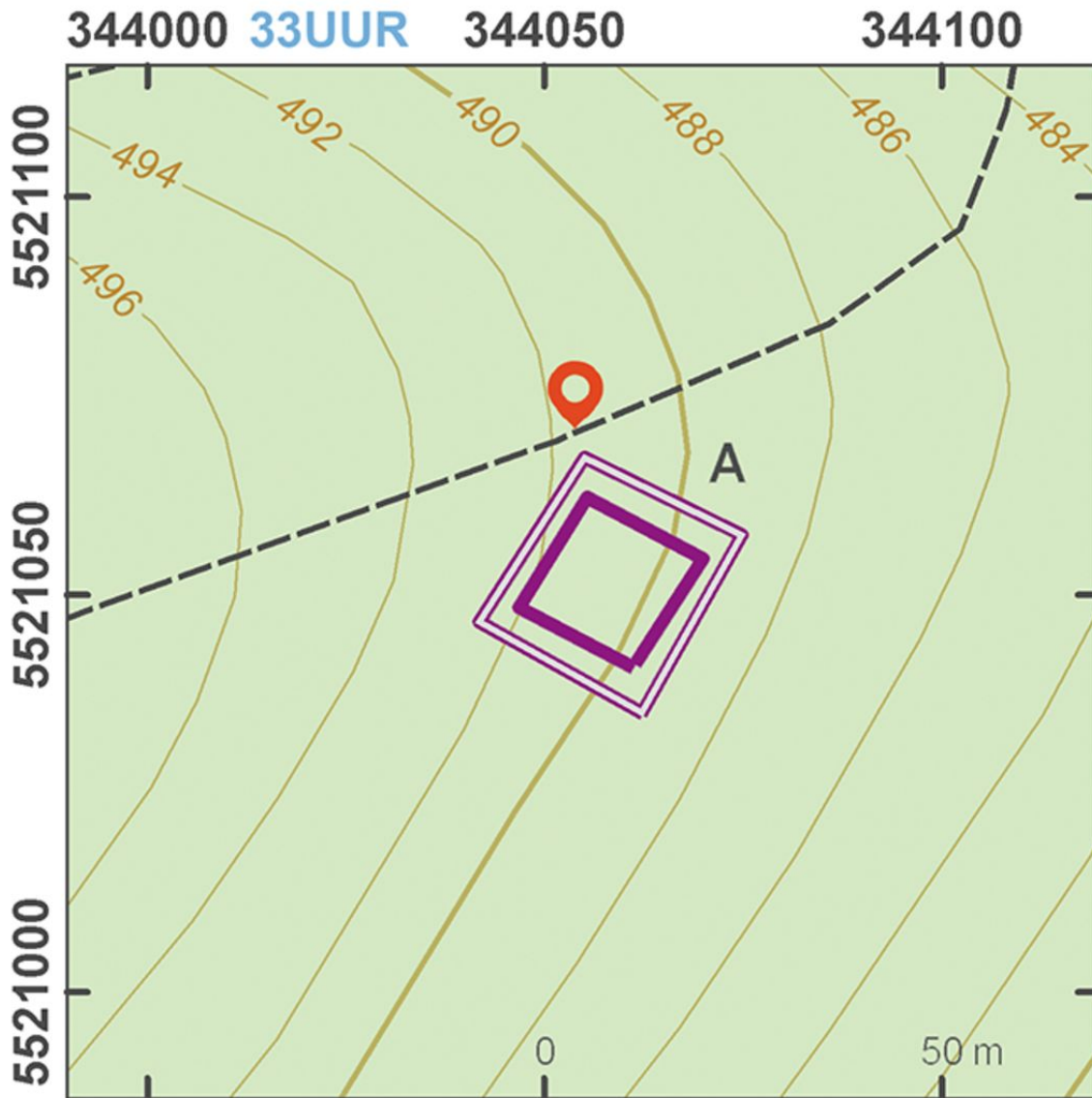
Navigation points: N 49°50'35.80", E 12°51'27.85" (E); N 49°50'03.28", E 12°50'33.23" (I); N 49°49'09.57", E 12°50'19.91" (B); N 49°49'17.78", E 12°49'55.26" (A); N 49°49'51.76", E 12°47'43.38" (F); N 49°50'32.85", E 12°48'00.28" (H); N 49°50'43.30", E 12°47'30.81" (G); N 49°51'07.94", E 12°48'21.98" (C); N 49°51'17.40", E 12°49'06.83" (D).

Map notes: A – Imperial redoubt; B – Třebel Castle; C–D – Swedish redoubts; E – reconstruction of a redoubt; F – southeast corner of a Swedish base camp; G – ditch and bank demarcating the Swedish camp; H – location of a Swedish artillery battery; I – bank protecting an Imperial artillery battery.



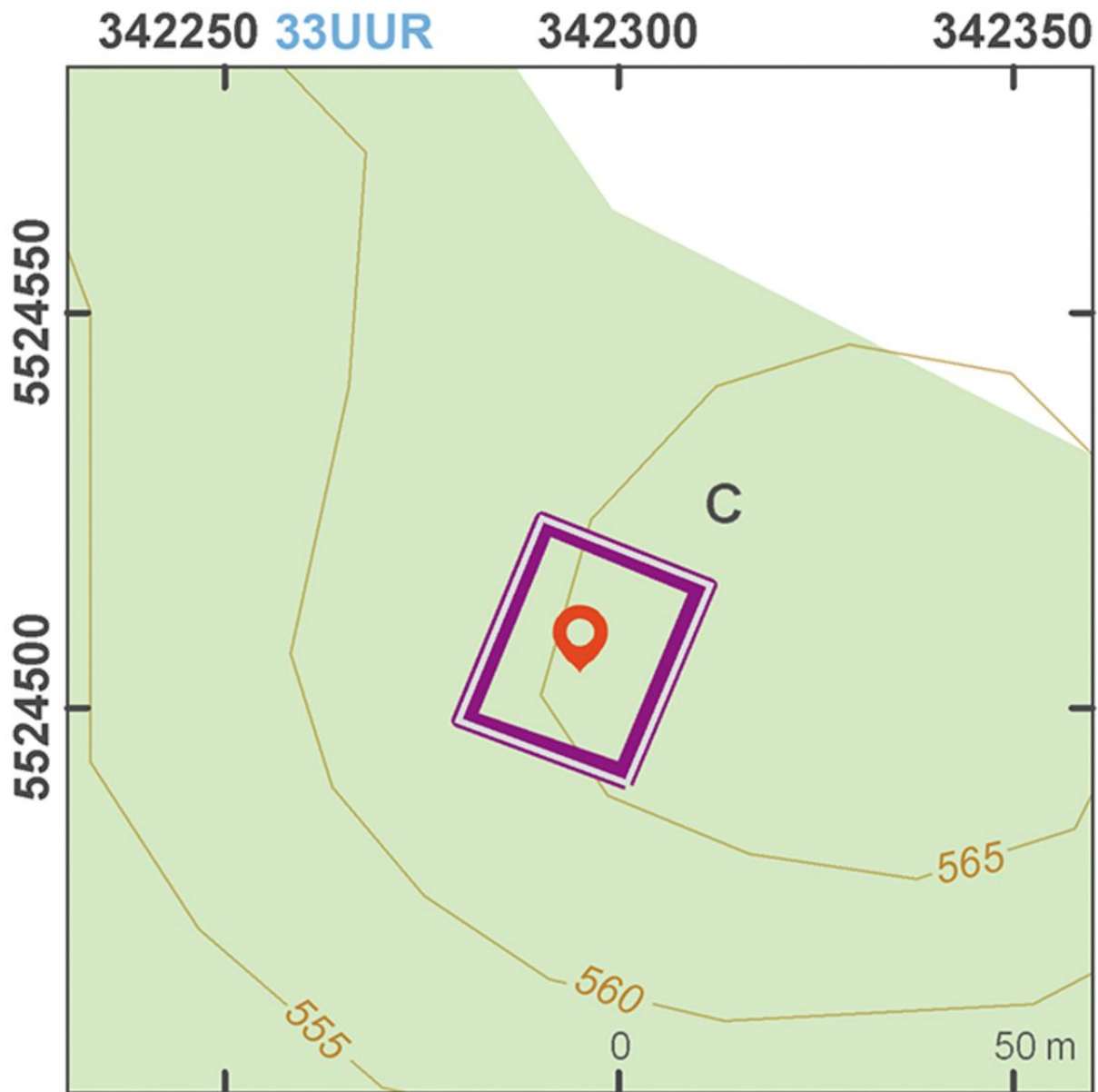
Access map.

After Kuna et al. 2014.



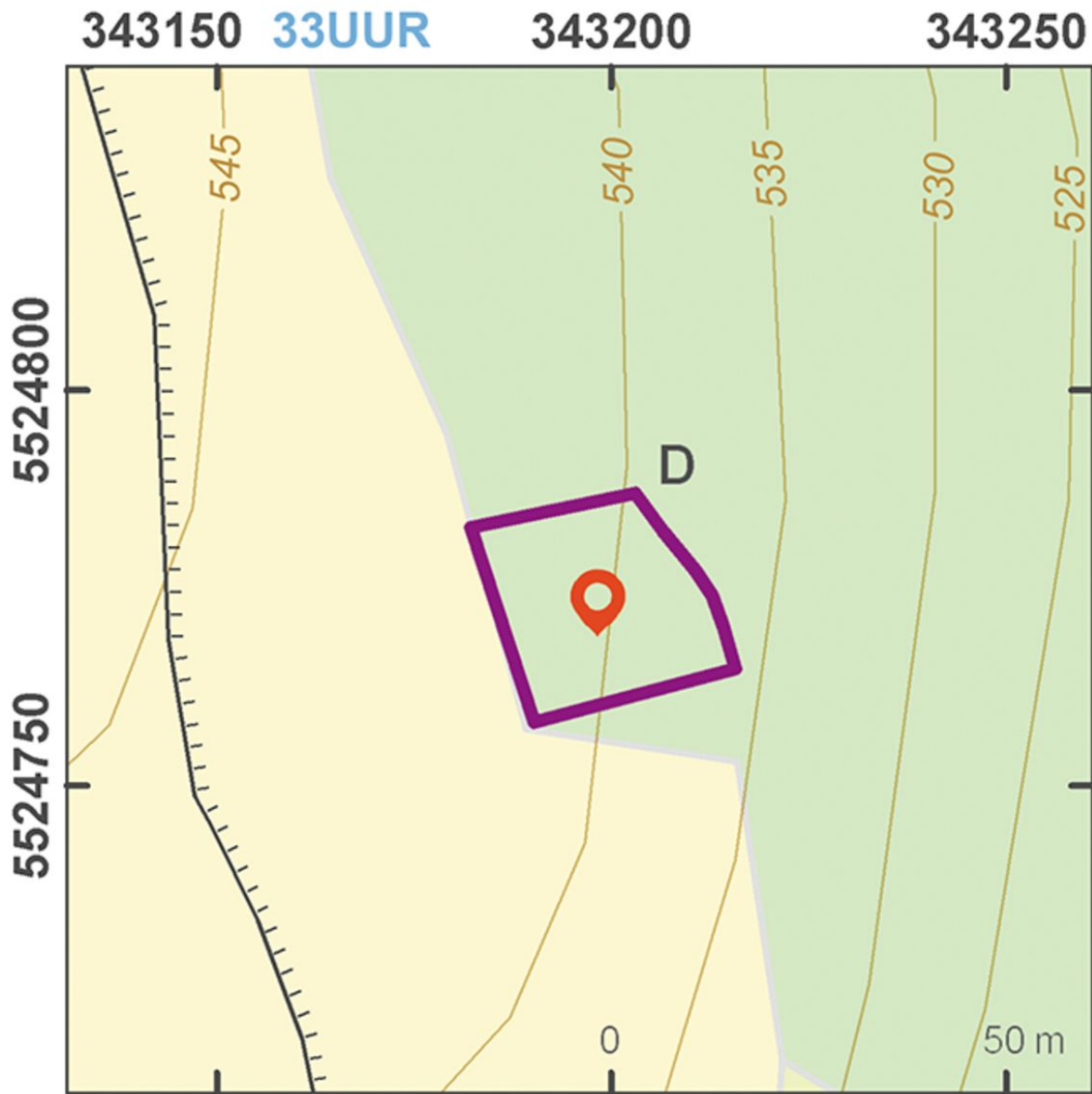
Site plan - redoubt A.

After Kuna et al. 2014.



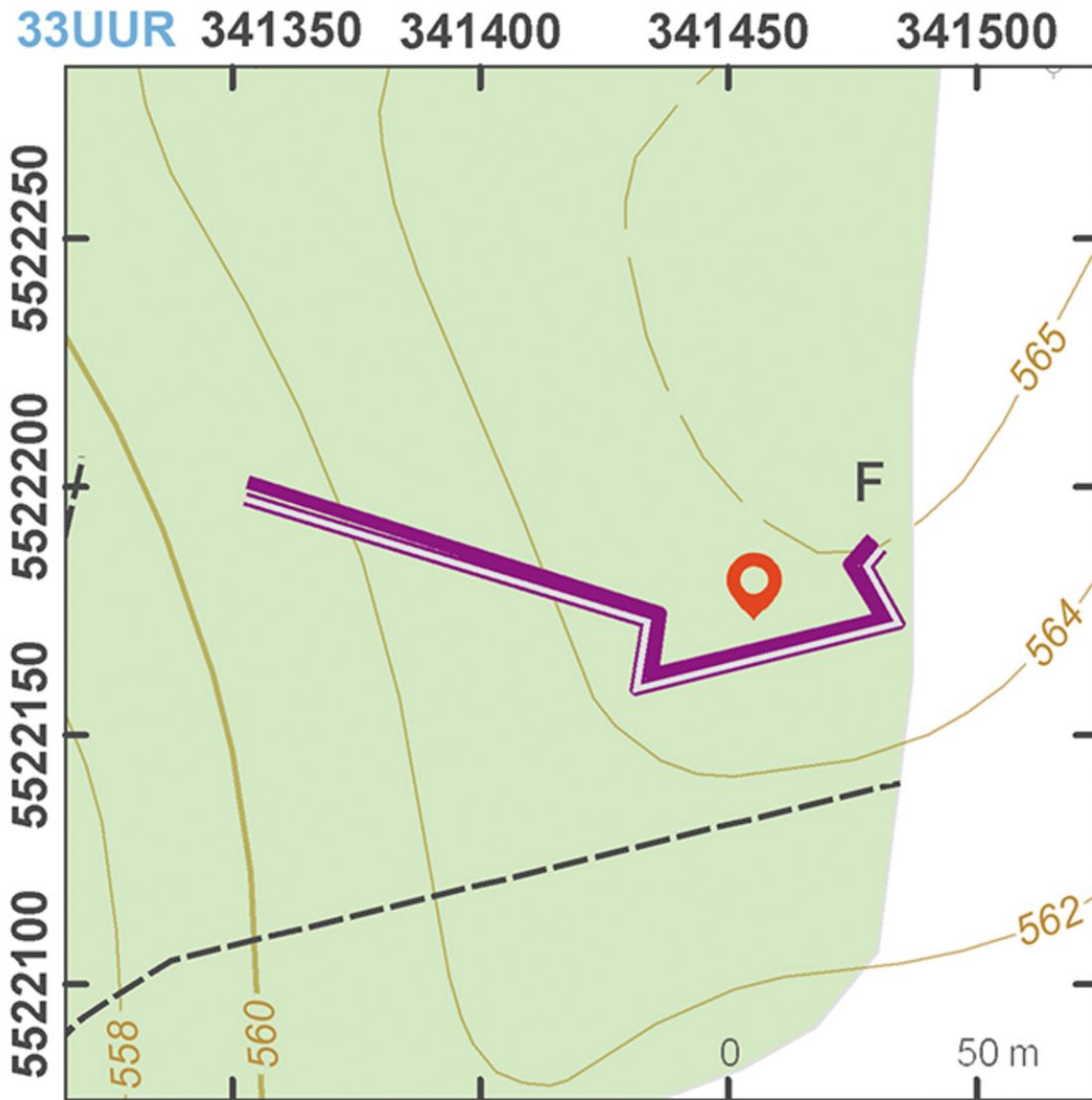
Plán lokality – reduta C.

Podle Kuna a kol. 2014.



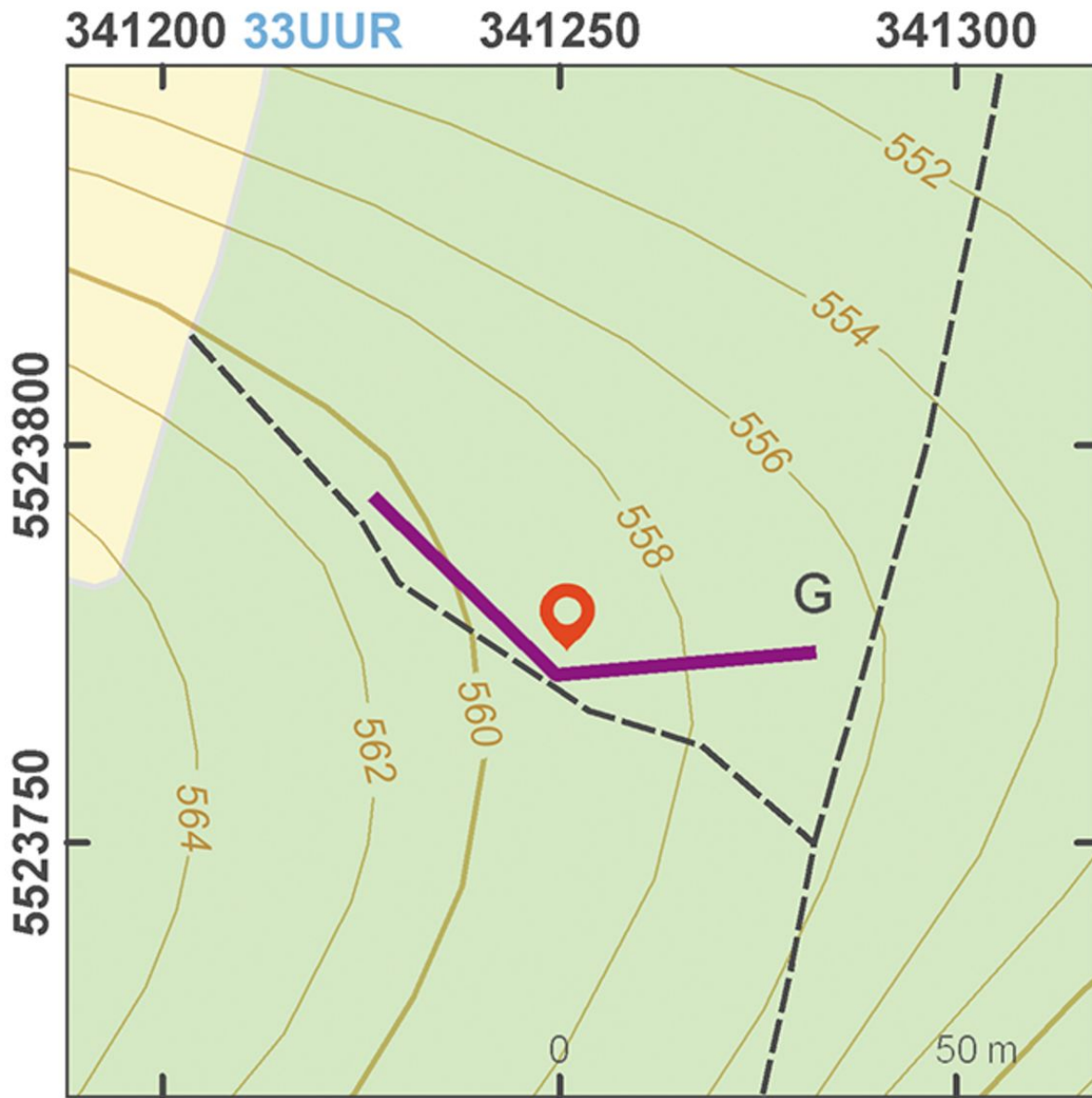
Site plan - redoubt D.

After Kuna et al. 2014.



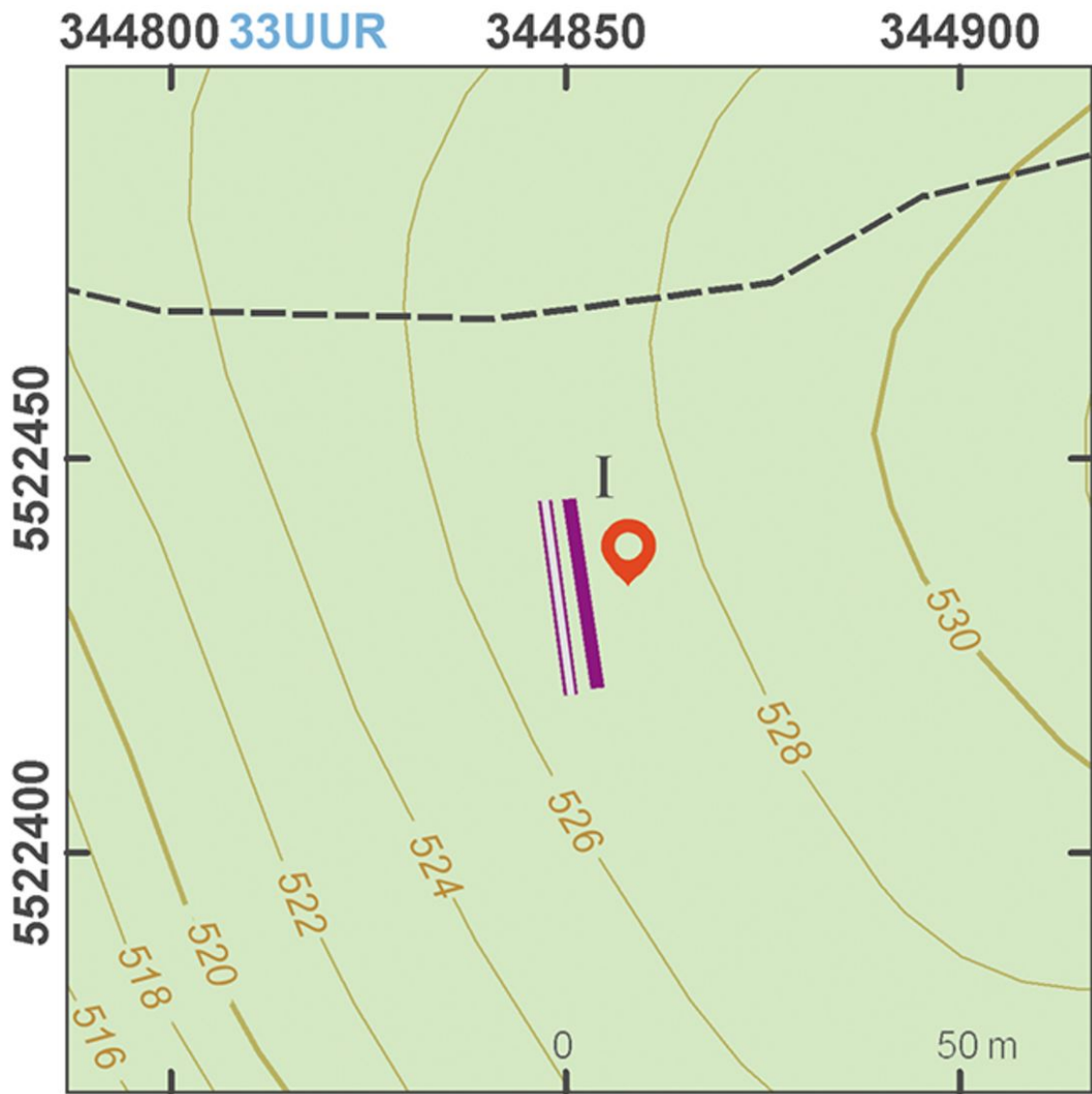
Site plan – corner of the field camp (F).

After Kuna et al. 2014.



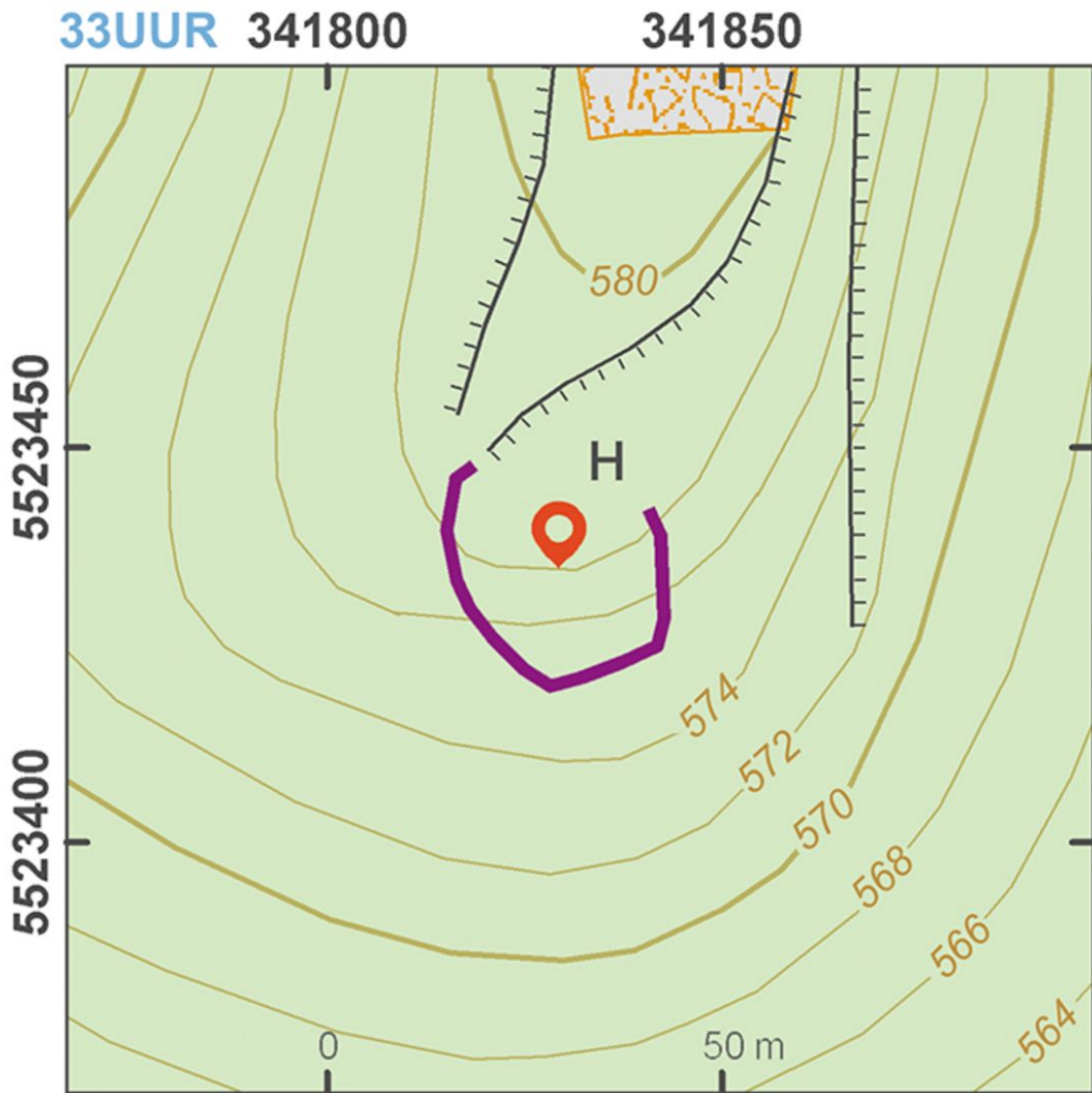
Site plan - camp bank (G).

After Kuna et al. 2014.



Site plan – artillery battery bank (I).

After Kuna et al. 2014.



Site plan – artillery battery H.

After Kuna et al. 2014.



Reconstruction of a redoubt near Olbramov.

Photo Z. Kačerová, 2014.



An artillery fortification on the site of Hrotek.

Photo Z. Kačerová, 2014.