

## Putim, Písek dist., South Bohemian Region

### Camp sites of the Palaeolithic and Mesolithic

(300,000 to 7,000 years ago)

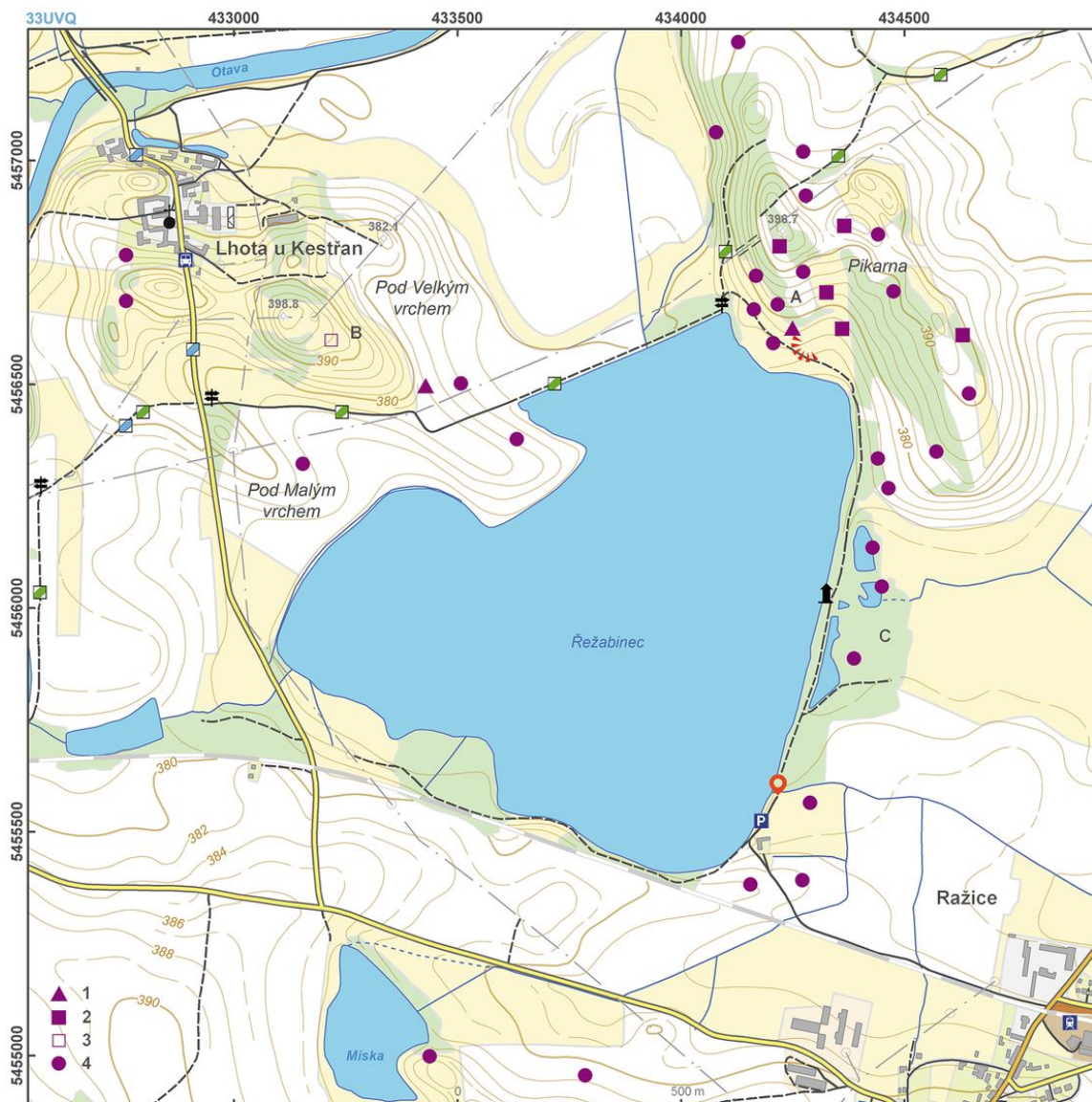


A hunter-gatherer landscape with seasonal settlement traces from various periods of the Palaeolithic and Mesolithic, dating to ca. 300,000 – 5,000 BC. Archaeological excavations and surveys revealed around fifty hunting camps situated on the edges of a former lake and wetlands that were changed into an artificial pond in the 16th century. The local environment provided hunters and gatherers with rich sources of food: fish, fowl, eggs, water plants, forest berries and large herbivores in the nearby woodlands. Human activities are primarily documented by chipped stone tools, found here in large quantities.

**References:** Dubský 1949; Fröhlich 1997; Michálek 2003; Vencel a kol. 2006, 2007; [www\\_Putim.](http://www.Putim.cz)

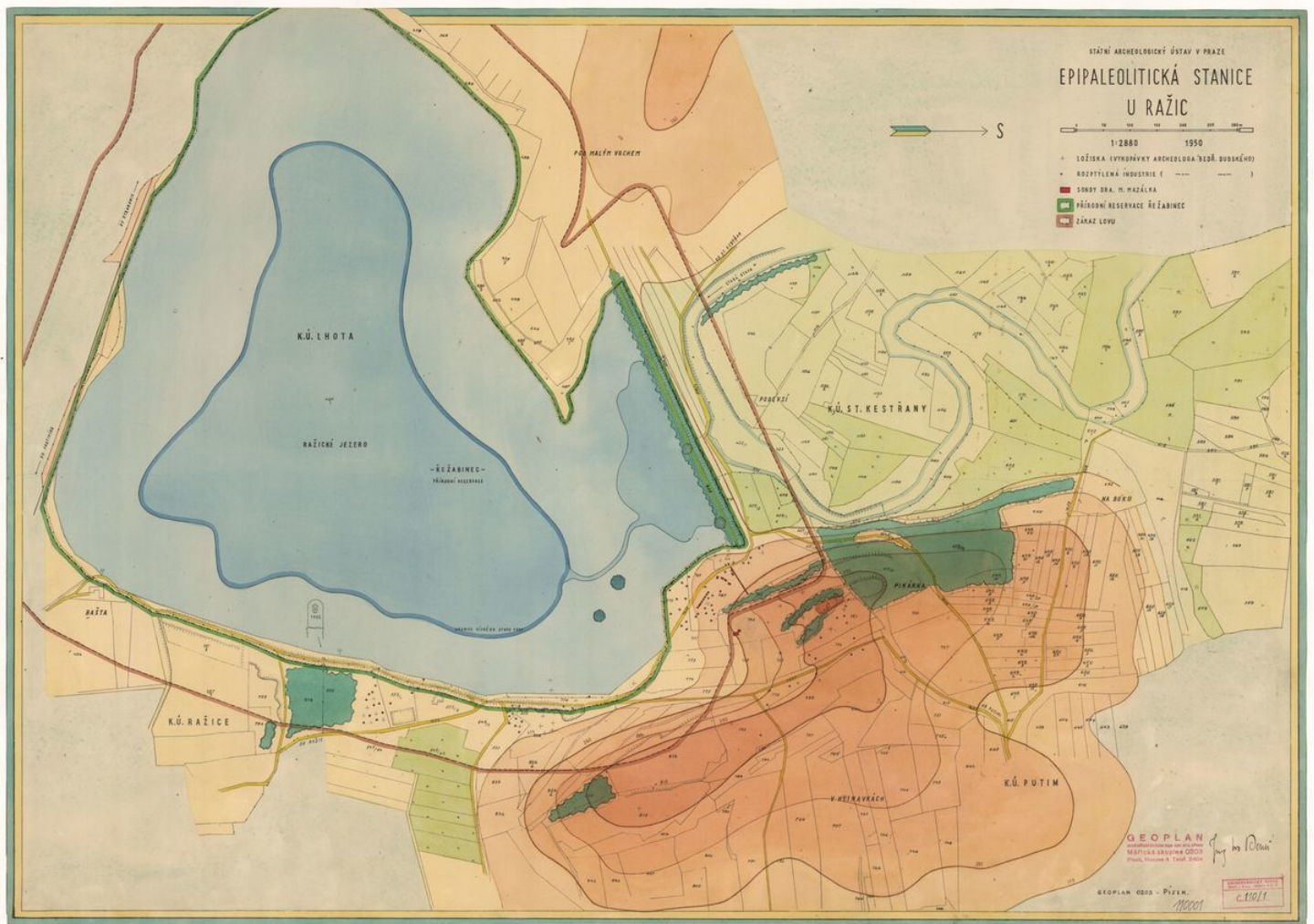
**Navigation points:** N 49°14'58.45", E 14°05'45.87".

**Map notes:** A–C – areas with the most significant concentrations of Mesolithic sites. 1 – Middle Palaeolithic camp site; 2 – Upper Palaeolithic camp site; 3 – Late Palaeolithic camp site; 4 – Mesolithic camp site.



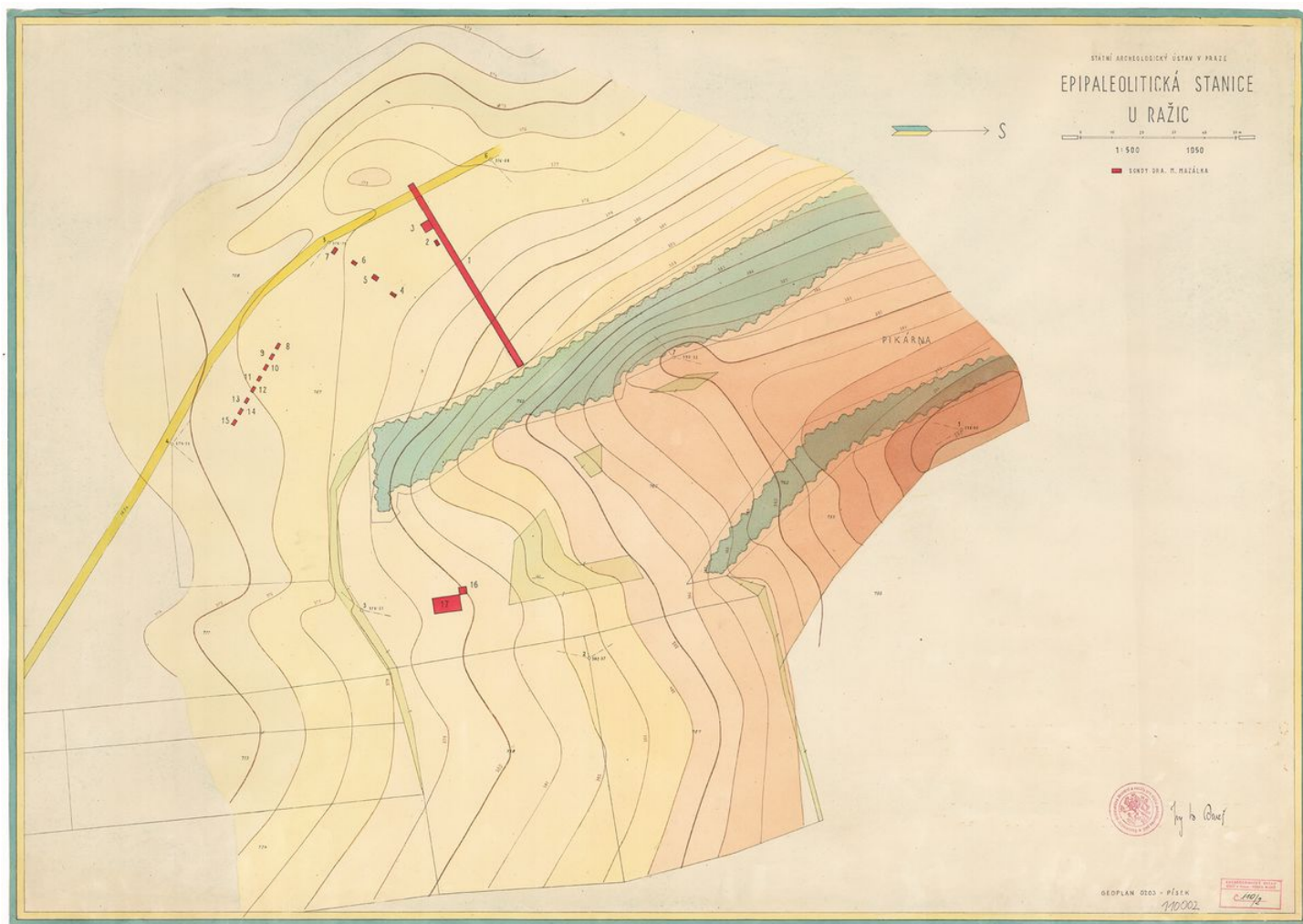
Access map / site plan.

After Kuna et al. 2014.



Coloured cadastral map with archaeological trenches.

Geoplan Písek 1950. Archives of the IoA, PY000110001.

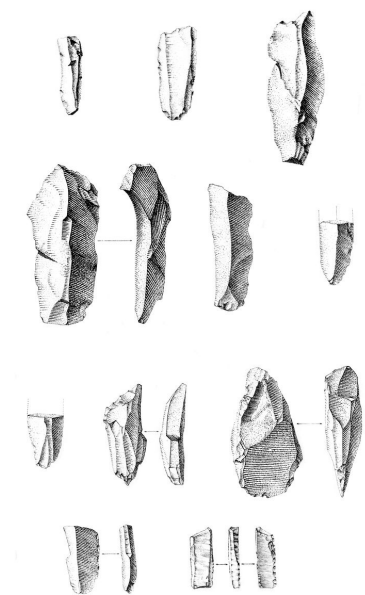


M. Mazálek's trenches in area of the Epipalaeolithic camp.

Geoplan Písek 1950. Archives of the IoA, PY000110002.



A picture from the 1950 excavations of M. Mazálek. Trench A.  
Archives of the IoA, TX195101502.



Selection of stone tools from M. Mazálek's excavation in 1950.  
Archives of the IoA, TX195101502.