

# Prague-Újezd nad Lesy, Prague

## Deserted Medieval village 'Hol'

(14th–15th cent.)



The medieval village of 'Hol' existed from the 14th century to the 15th century. The axis of the village was a 500-metre-long village green surrounded by more than twenty homesteads. The main part of the homesteads was a three-compartment house, the dominant building type in Central Bohemian countryside up to the beginning of the 20th century. Structures such as cowsheds and other farm buildings were also often built of stone, since the surrounding area offered abundant supplies of sandstone, the extraction and export of which could have provided a living for some of the local residents. The homesteads were separated from one another by stone walls. Also preserved today are two wells and the field boundaries around the village.

**References:** Beránek 2011; Klír – Beránek 2012; Beránek 2014.

**Navigation points:** N 50°05'09.57", E 14°41'46.95".

**Map notes:** A–B – dams of Early Modern ponds; C – village green; D (also 14, 18) – homesteads; E – preserved wells; F – dunghill; G–H – field boundaries; J – probable field boundaries east of the village.



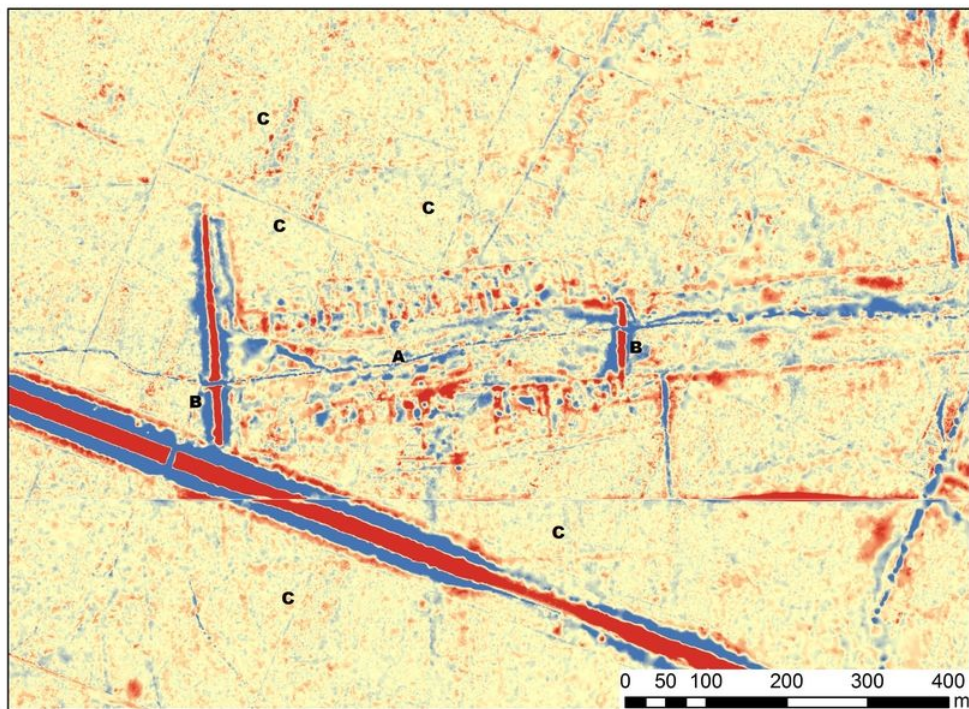
Access map.

After Kuna et al. 2014.



Site plan.

After Kuna et al. 2014.



LLS picture of the site: A: square; B: Early Modern ponds dams; C: better visible sections of fields (plužina).

Data ČÚZK Prague; processed by J. Hasil, 2015.



One of two preserved Medieval wells.

Photo Z. Kačerová, 2014.



Corner stone of the village mayor's house.

Photo Z. Kačerová, 2014.



View of the former village square.

Photo Z. Kačerová, 2014.



Archaeological field works.

Photo L. Beránek, 2011.



Bank of the former Žák pond.

Photo J. Marounek.