

# Písek, Písek dist., South Bohemian Region

## Medieval gold mines 'Havírky'

(13th–17th cent.)



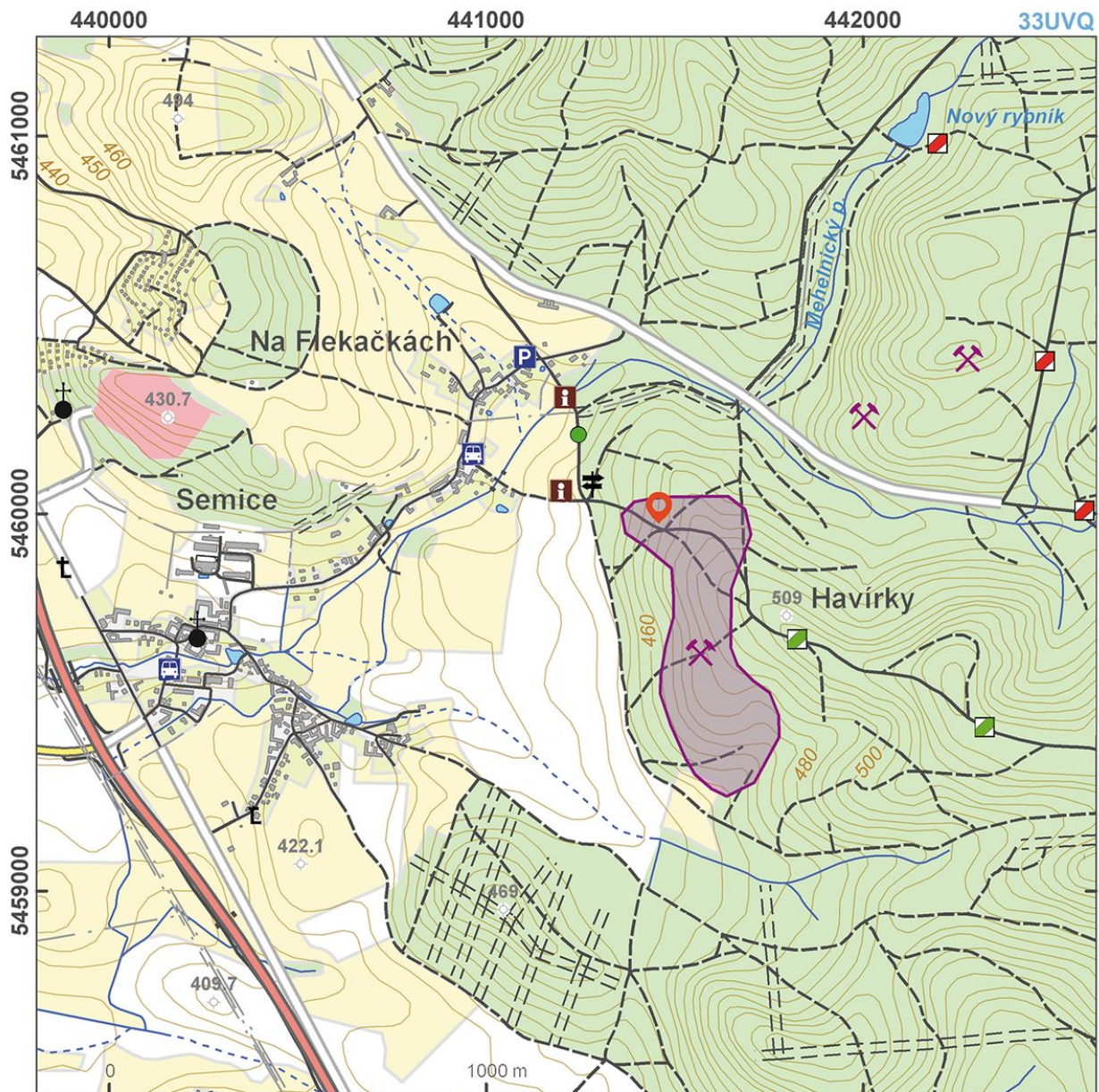
The 'Havírky' medieval gold mines were the first site of this type subjected to archaeological excavation in the country. Underground gold mining in the Písek Mts. began at the turn of the 14th century, following intensive gold panning activities on south Bohemian auriferous rivers dating back to prehistoric times. The peak of mining at 'Havírky' falls in the 15th and 16th centuries. Archaeological excavations, which were also partly conducted in flooded subterranean spaces, yielded two rows of collapsed shafts and adits as well as a processing area with forges and mining tools.

**References:** Fröhlich – Kurz 1980; Fröhlich 1997, 2006; [www\\_Písek](http://www.Pisek.cz).

**Navigation points:** N 49°17'22.41", E 14°11'42.61".

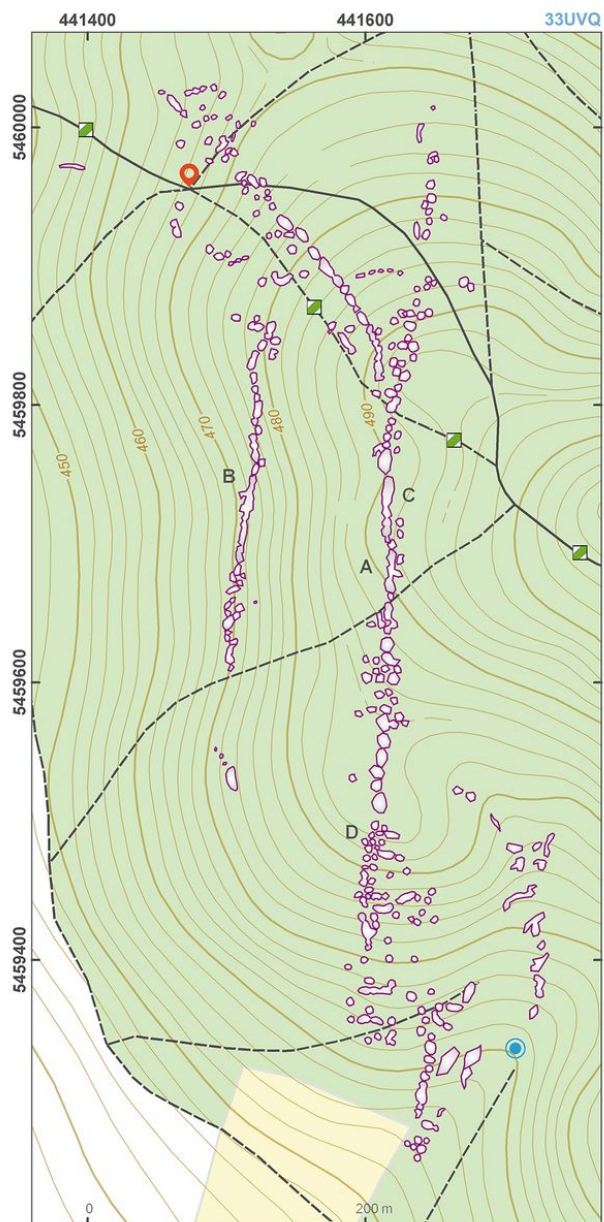
**Map notes:** A – main line of collapsed shafts and adits; B – second line of collapsed shafts and adits; C – the deepest investigated shaft; D – bricked shaft secured with a grille.





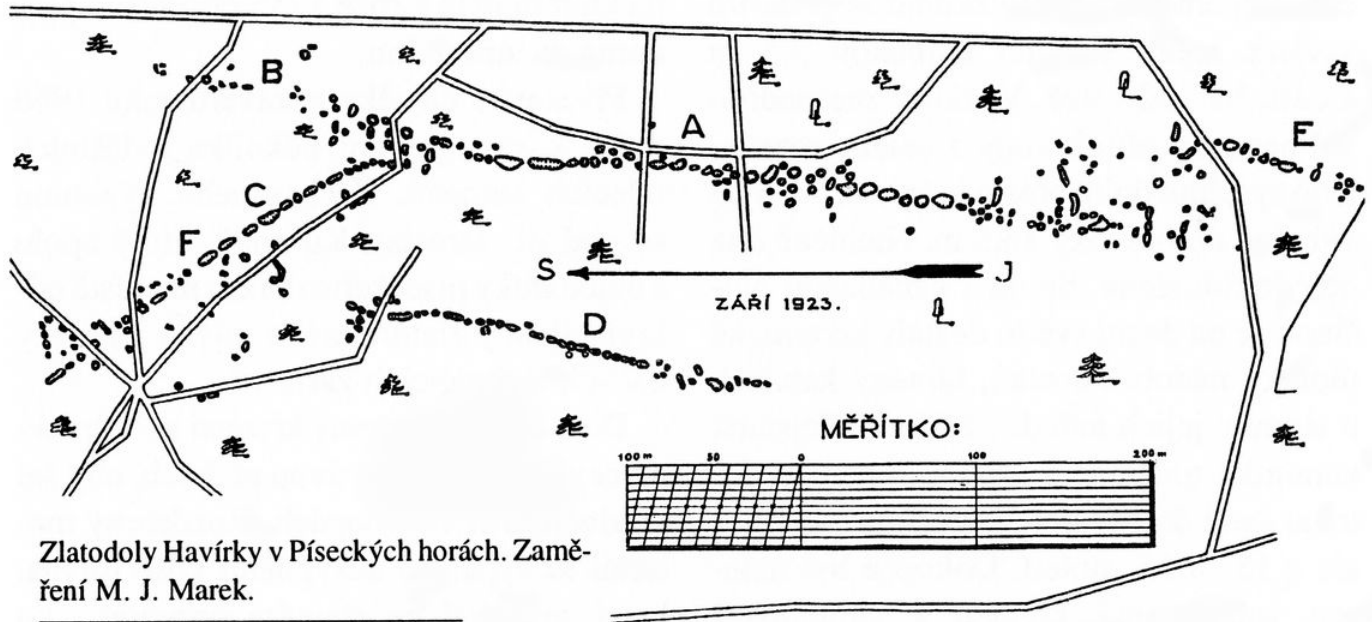
Access map.

After Kuna et al. 2014.



Site plan.

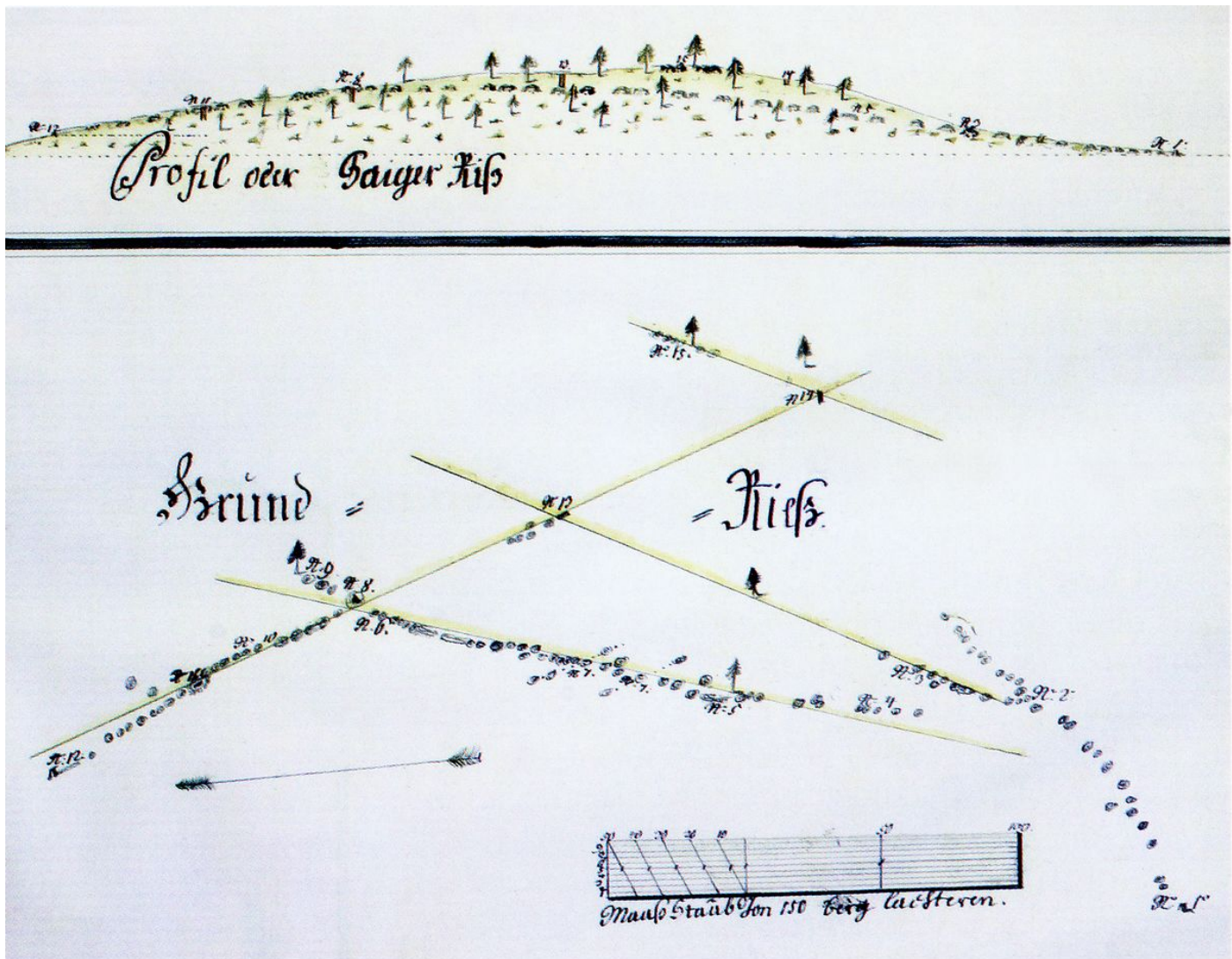
After Kuna et al. 2014.



M. Marek's plan of the goldmine.

After Fröhlich 1997.





■ *Plán šachet na Havírkách z roku 1774 od příbramského hormistra Jana Antonína Alise. Státní ústřední archiv Praha.*

Plan of the mine shafts by J. A. Alis from 1774.

State Central Archives Prague. After Fröhlich 2006.





One of deserted shafts.

Photo Z. Kačerová, 2014.



Mouth of one of the shafts.

Photo Z. Kačerová, 2014.