

# Malovice u Erpužic, Tachov dist., Plzeň Region

## Prehistoric barrow cemetery

(1600–1000 BC)

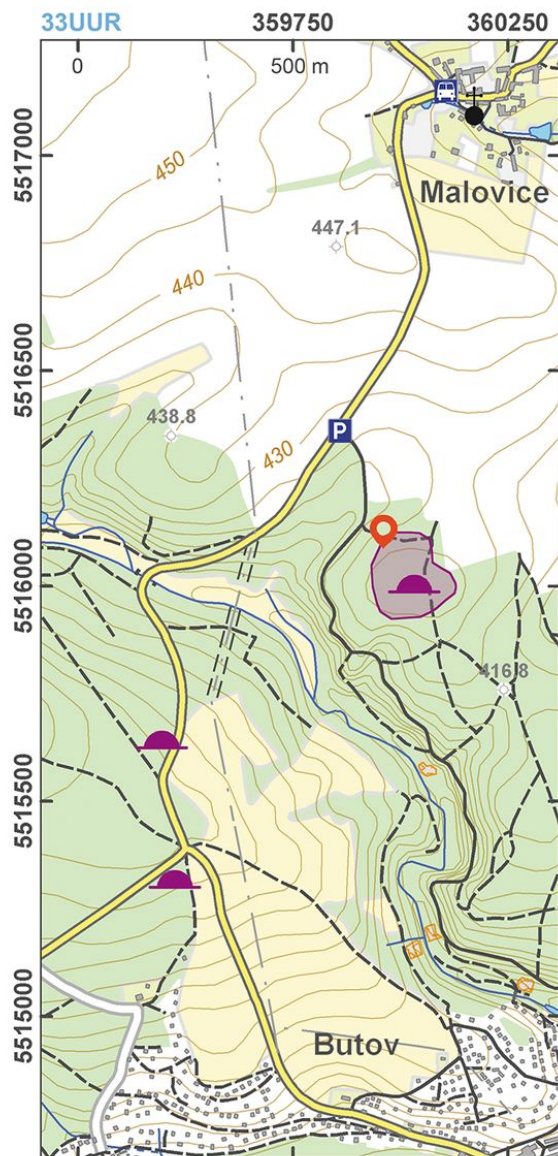


The barrow cemetery of the Middle and Late Bronze Ages (1600-1000 BC) is one of few sites of this type relatively well preserved. Although almost thirty barrows are identifiable at the site, only six of them have been excavated. The barrows usually included a stone construction and remains of inhumation as well as cremation burials, usually in vessels – urns. Richer burials were also furnished with bronze jewellery, weapons and tools, and in several cases even ornaments from gold and amber appeared.

**References:** Eichhorn 1934, 1937; Šaldová 1967; Čujanová-Jílková 1970; Šaldová 1975.

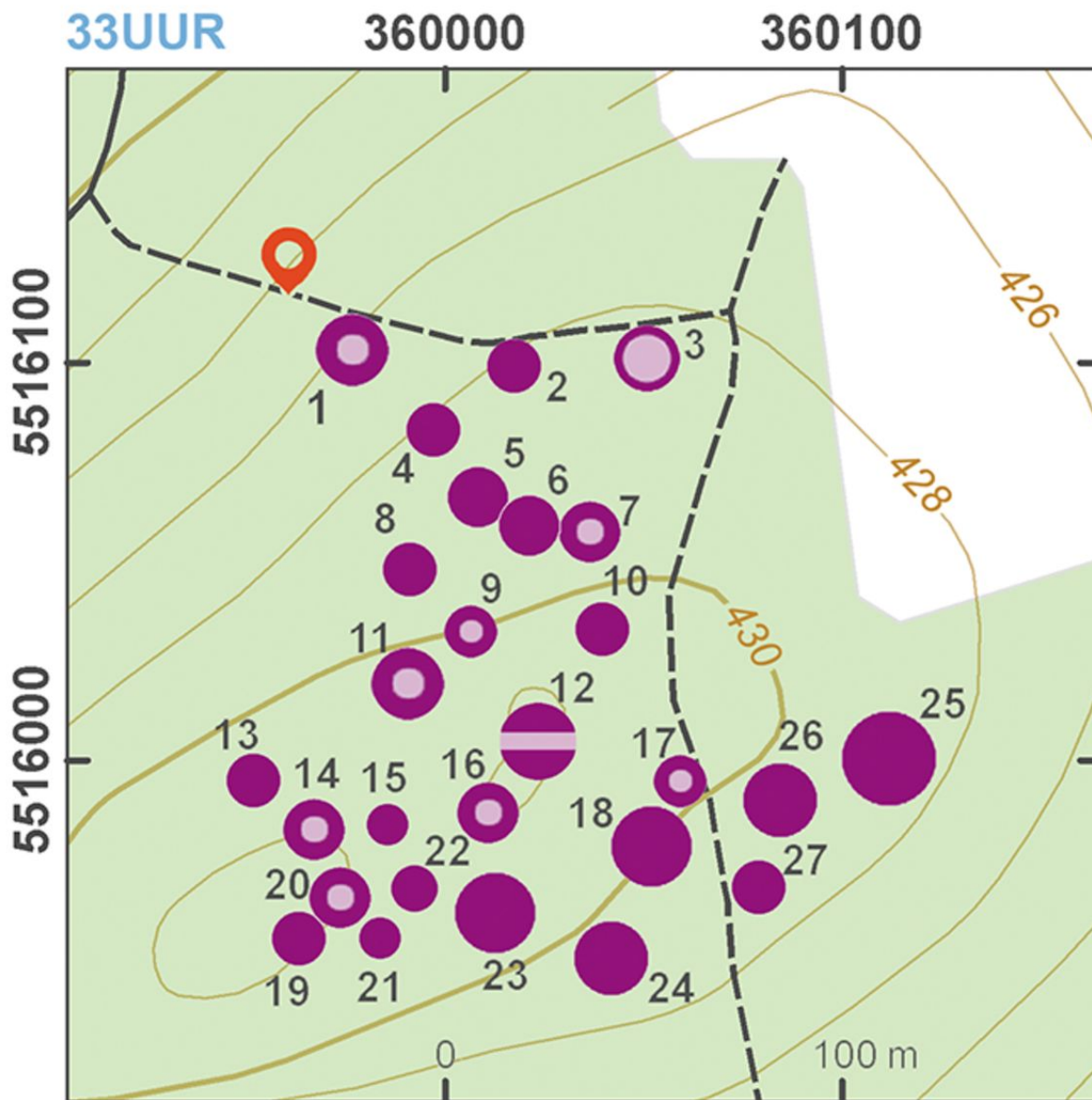
**Navigation points:** N 49°46'52.30", E 13°03'16.98".

**Map notes:** 1–27 – barrows.



Přístupová mapa.

Podle Kuna a kol. 2014.



Site plan.

After Kuna et al. 2014.





Barrows at Malovice.

Photo Z. Kačerová, 2013.



Barrows at Malovice.

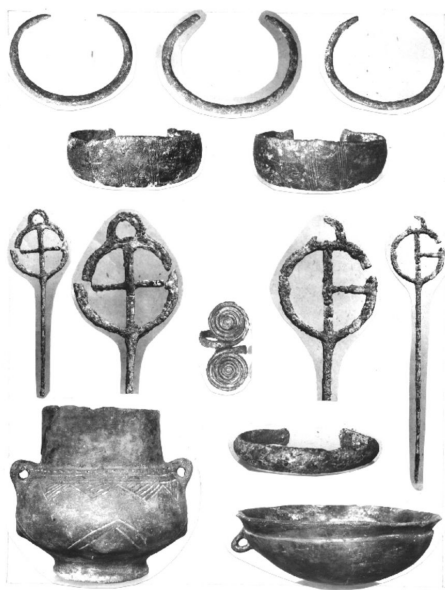
Photo Z. Kačerová, 2013.





Barrows at Malovice.

Photo Z. Kačerová, 2013.



Finds from the barrow excavated by O. Eichhorn.

Archives of the IoA, TX195802982.



Unearthed construction of a barrow in near-by Stříbro-Butov.

Photo Z. Kačerová, 2013.