

Libušín, Kladno dist., Central Bohemian Region

Early Medieval hillfort

(10th–11th cent.)

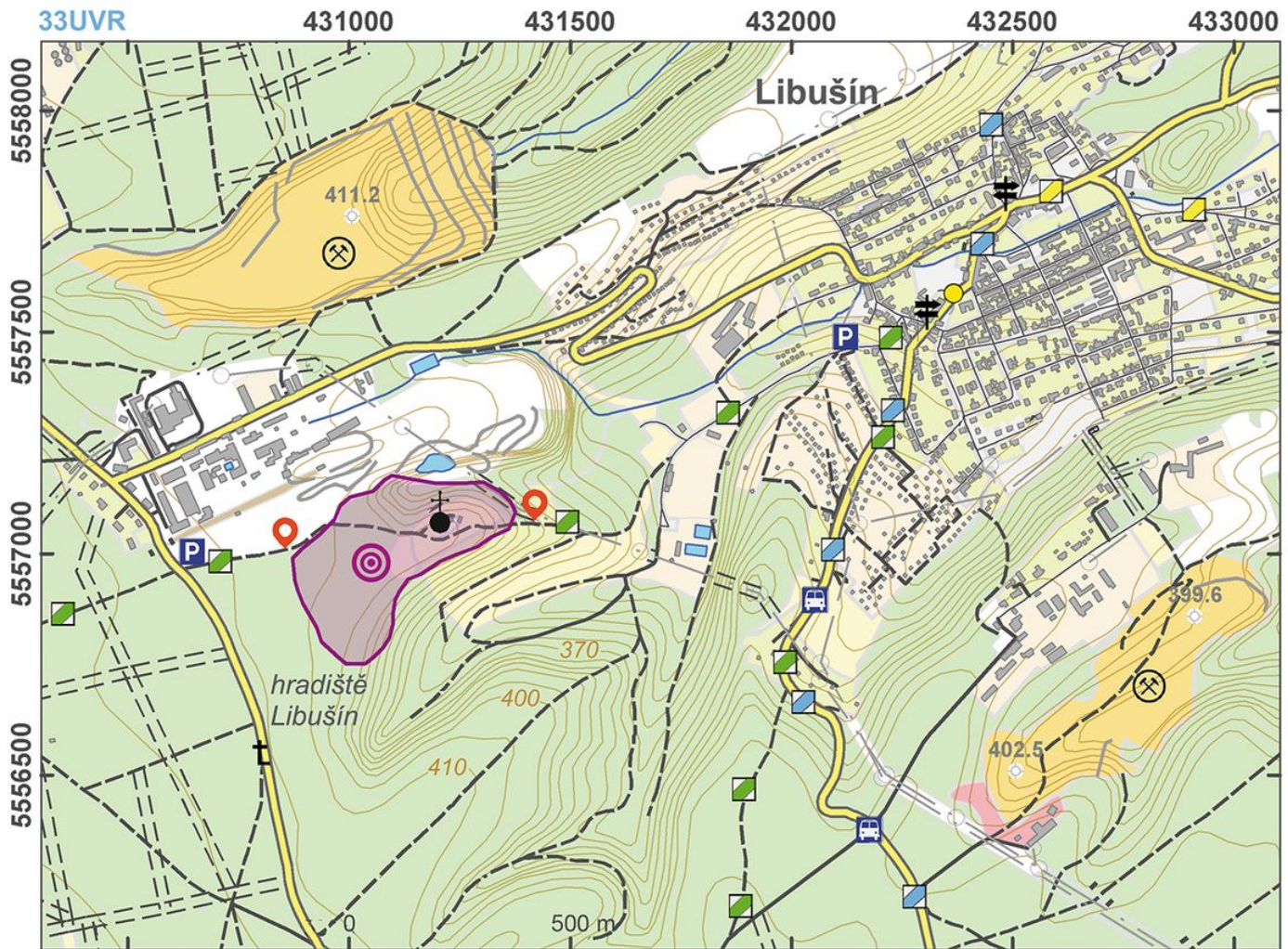


The Přemyslid hillfort from the 10th and 11th centuries was situated on the trade route between central Bohemia and the Ohře (Eger) River region. According to Cosmas's Chronicle of the Czechs, the mythical Princess Libuše lived at the stronghold and was buried at the site; however, only a small unfortified settlement existed here during the earlier phases of the Middle Ages. The hillfort was probably built during the reign of Boleslav I (935-972), but since it was in competition with nearby 'Budeč', it probably belonged only to secondary centres. The hillfort includes an acropolis, two baileys and a fortified well.

References: Váňa 1973; Varadzin 2012.

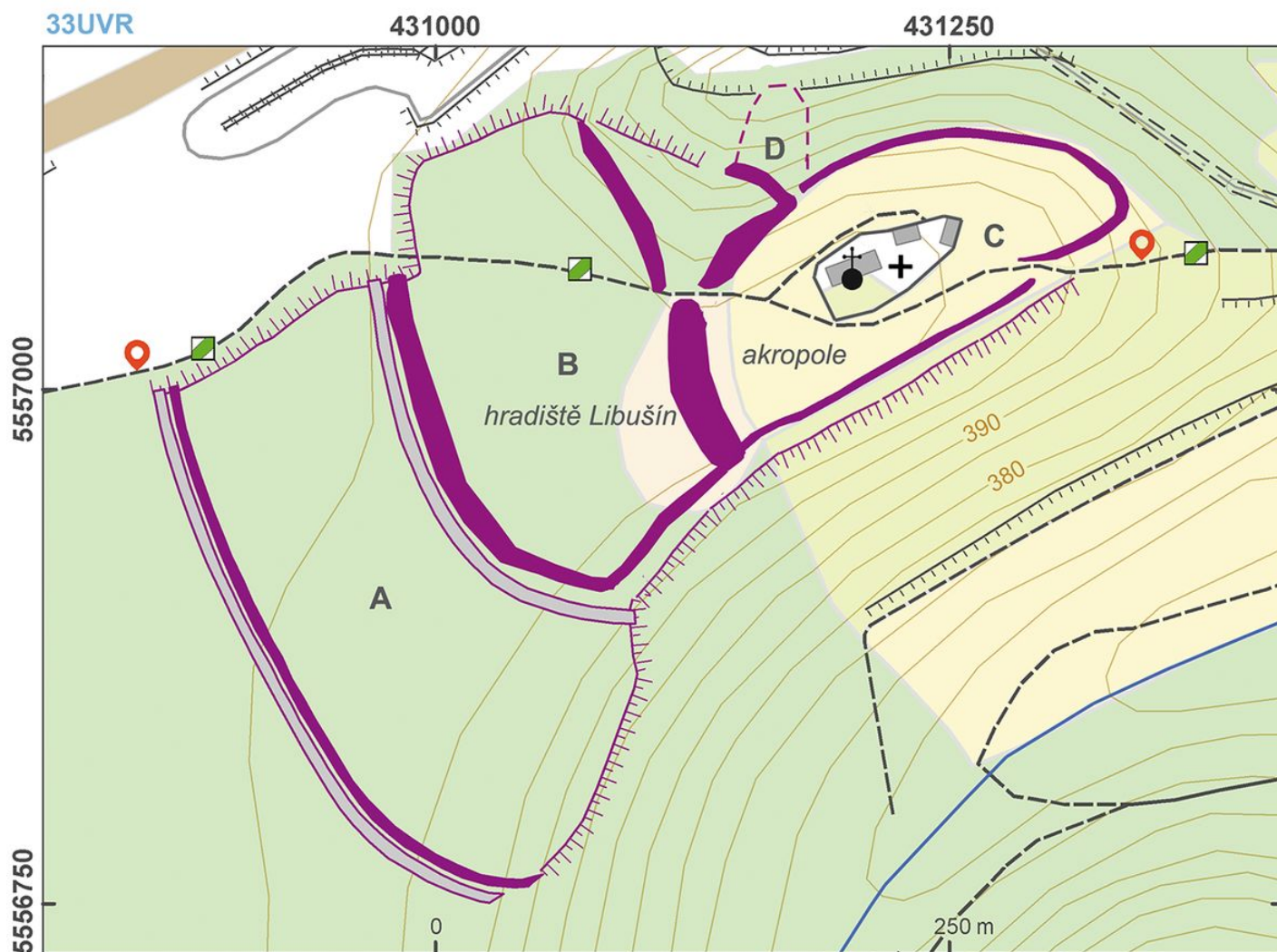
Navigation points: N 50°09'40.60", E 14°01'55.24" (west); N 50°09'42.45", E 14°02'19.65" (east).

Map notes: A – second bailey; B – first bailey; C – acropolis; D – well, fortified by a simple stone wall with clay mortar.



Access map.

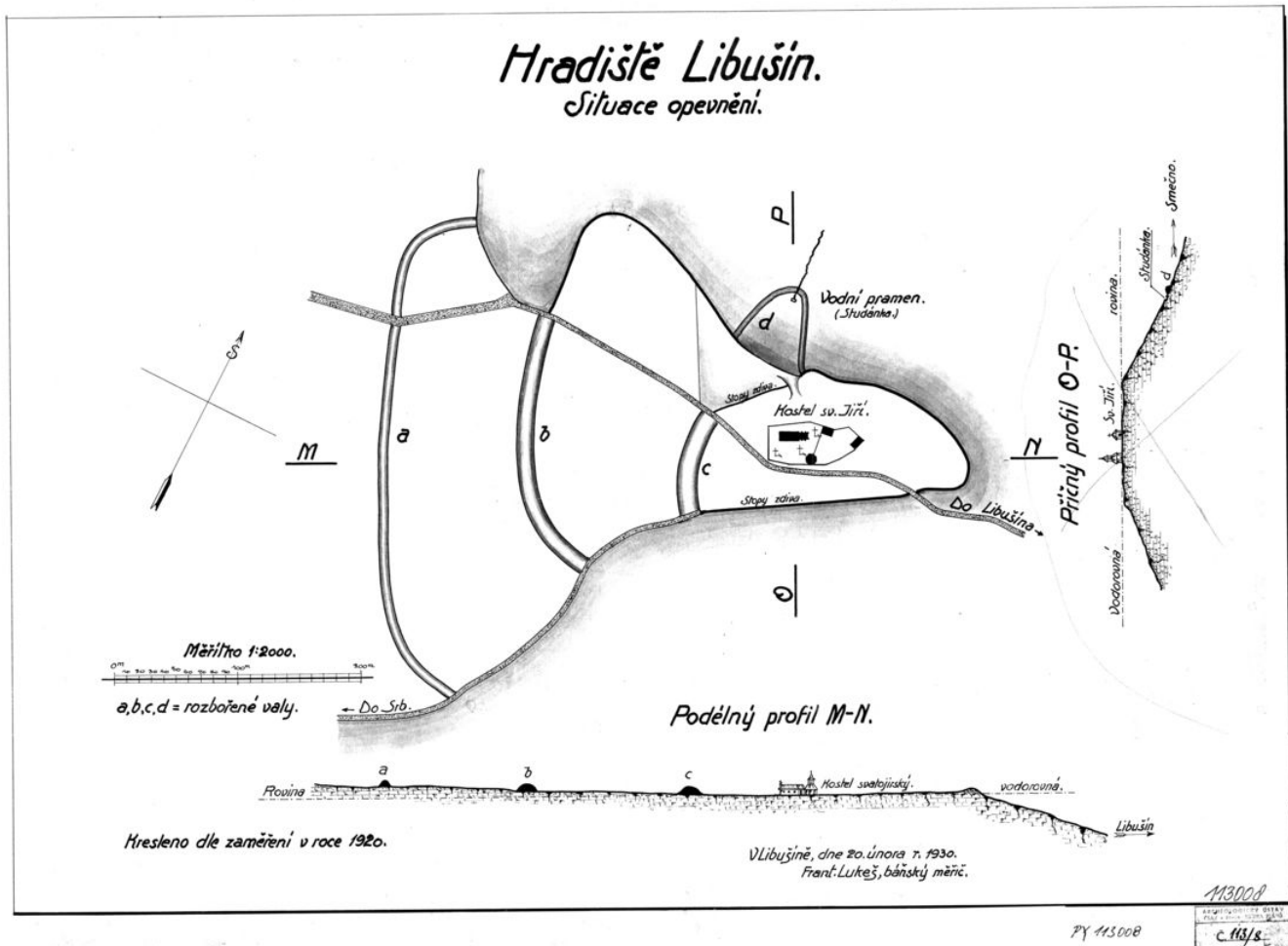
After Kuna et al. 2014.



Site plan.

After Kuna et al. 2014.

113



Plan of the hillfort (1920).

F. Lukeš, 1930. Archives of the IoA, PY000113008.



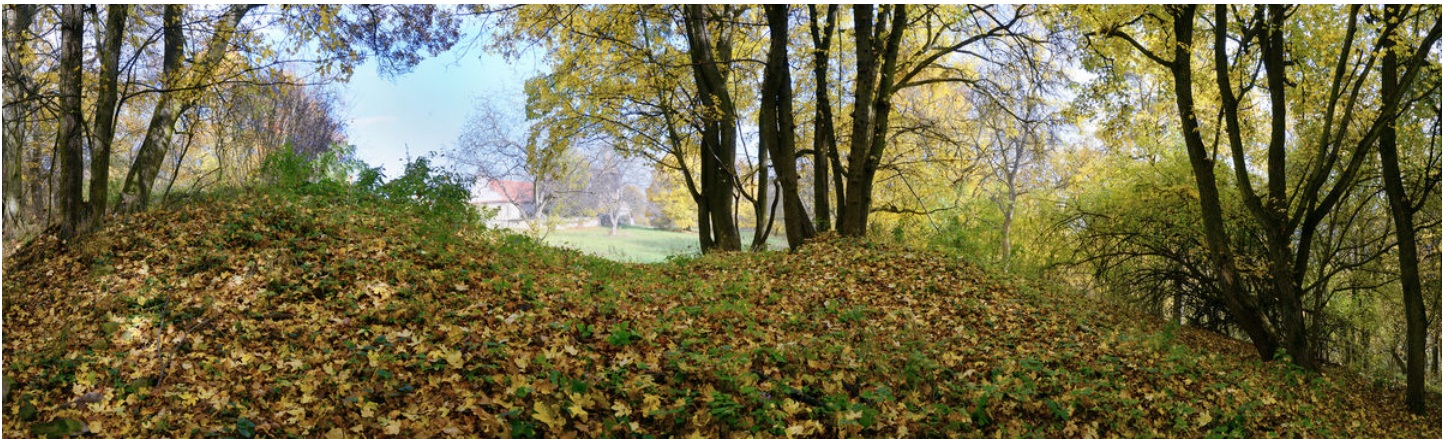
Church on the hillfort's acropolis.

Photo Z. Kačerová, 2013.



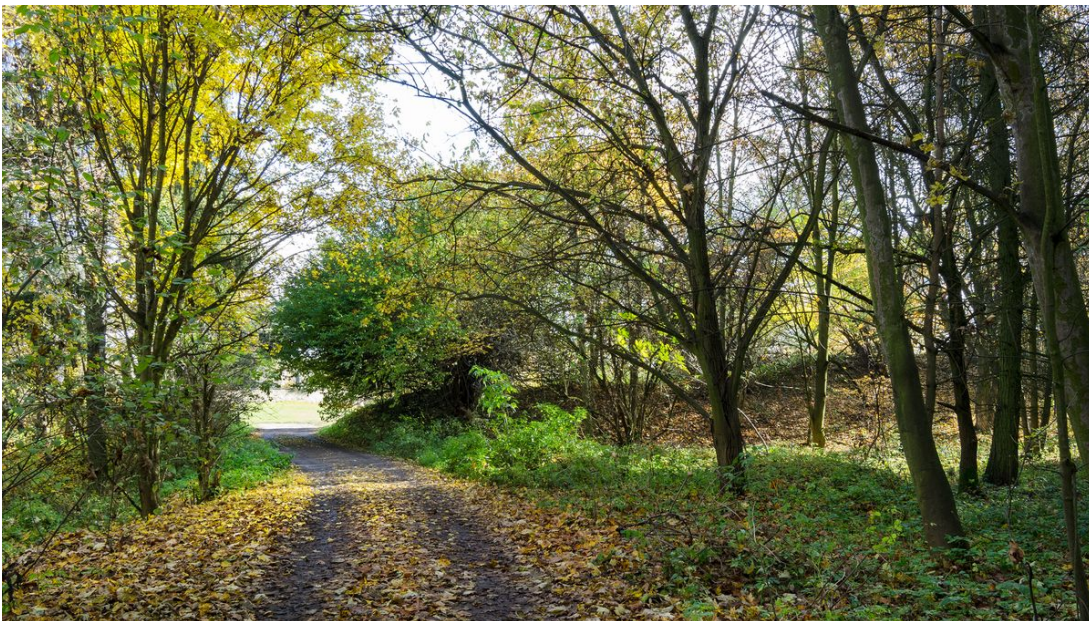
Church and a wooden bell tower on the hillfort's acropolis.

Photo Z. Kačerová, 2013.



Hillfort's fortification between the acropolis and the first bailey.

Photo Z. Kačerová, 2013.



Hillfort's fortification between the acropolis and the first bailey.

Photo Z. Kačerová, 2013.



Aerial view of the hillfort.

Photo M. Gojda, 1992.



Aerial view of the hillfort.

Photo M. Gojda, 1992.



Aerial view of the hillfort.

Photo M. Gojda, 2005.