

Libomyšl, Beroun dist., Central Bohemian Region

Fortified manor 'Hrádek' near Libomyšl

(14th–17th cent.)

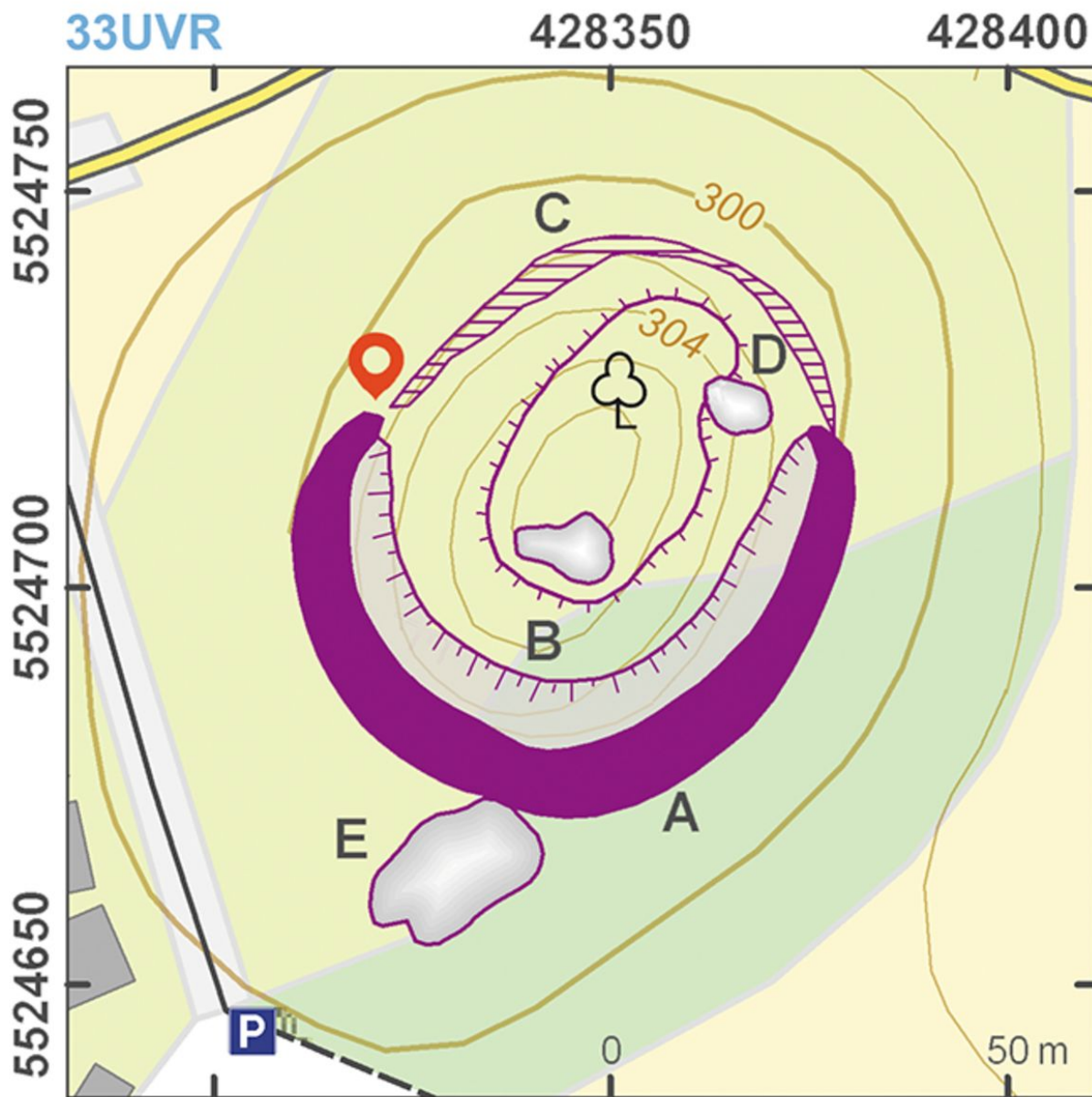


Standing on a hill near the village of Libomyšl, the site of 'Hrádek' has a history documenting the complicated development and continuity of the cultural landscape. The fortified manor with neighbouring village was likely founded here in the first half of the 14th century, and the manor was used for about two hundred years. The hill on which the manor stands was long regarded as an enormous prehistoric barrow. It is more probable, however, that it is just a natural rocky peak that was covered with several metres of soil to increase the site's defensive capacity and improve surveillance of the surrounding area.

References: Jelínek 1878; Maličský 1954, 87; Sedláček 1995, 214–216; Kolektiv 2000, 397–398; Blecha a kol. 2006; Novák – Vařeka 2013, 495–496.

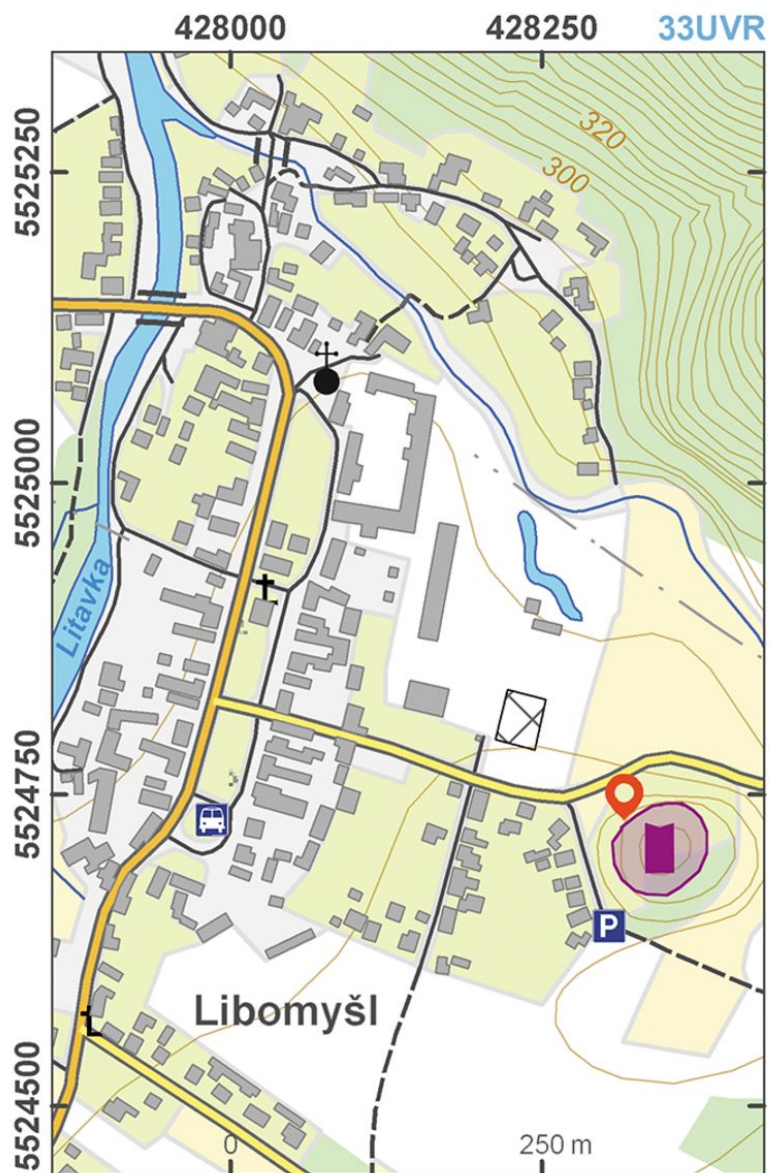
Navigation points: N 49°52'14.27", E 14°00'09.00".

Map notes: A – bank between the natural part of the hill and the part on which soil was piled; B – ditch; C – flat relief step; D – entrance to the manor; E – pit quarry.



Access map.

After Kuna et al. 2014.



Site plan.

After Kuna et al. 2014.



Aerial view of the site, taken from northwest.

Photo M. Gojda, 2013.



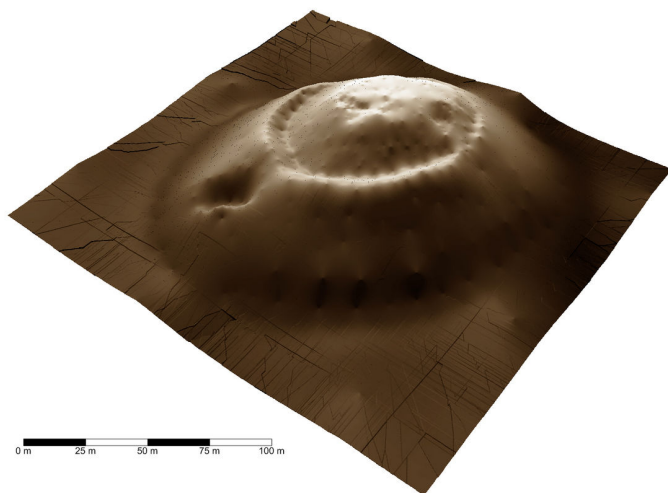
Aerial view of the site, taken from south.

Photo M. Gojda, 2013.



Aerial view of the site, taken from north.

Photo M. Gojda, 2013.



Digital model of the hill.

Measured and prepared by D. Novák and P. Vařeka, 2013.