

Kytlické Mlýny, Děčín dist., Ústí nad Labem Region

Defence bunkers on the Czechoslovak border

(1930s)

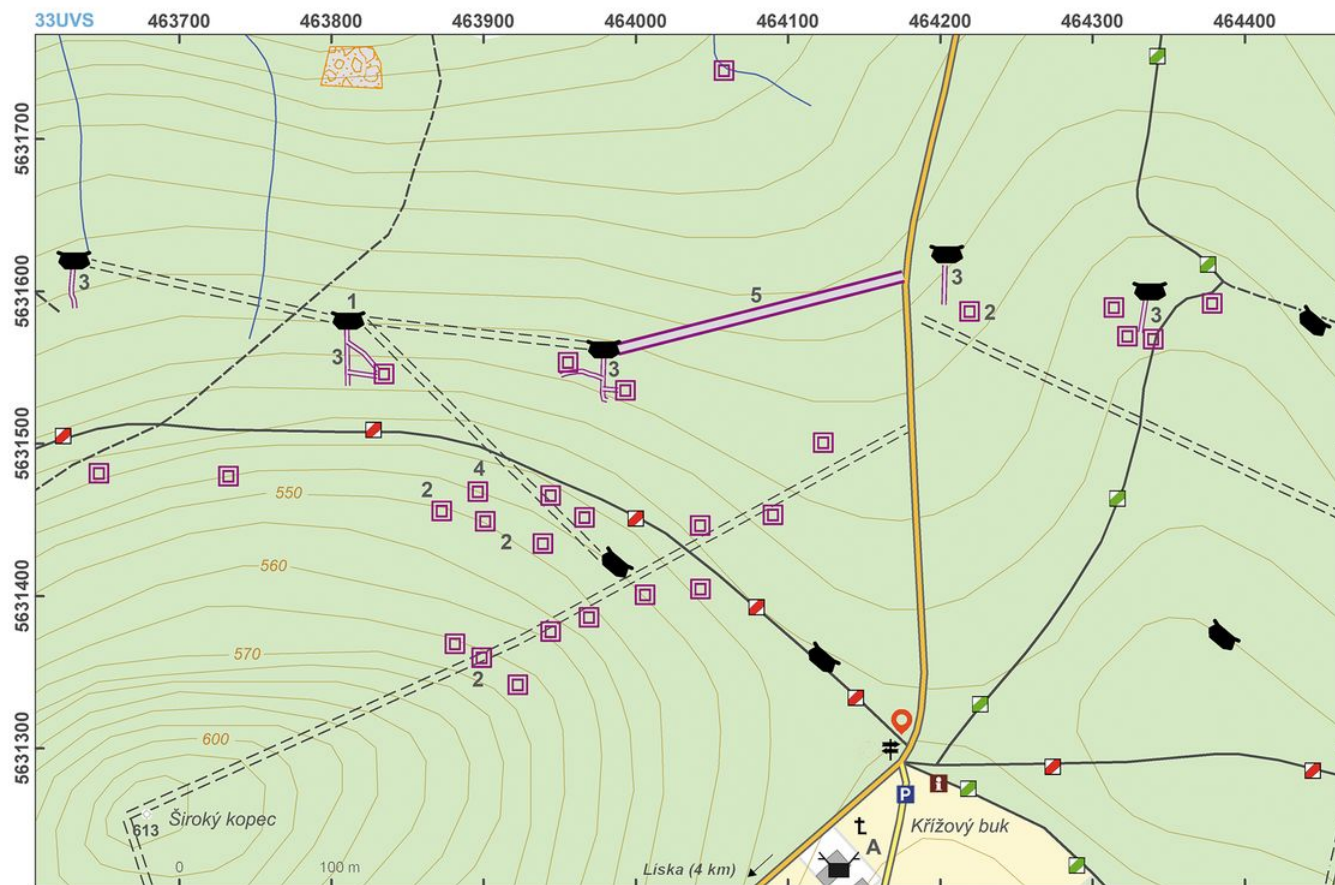


Section of the Czechoslovak border defence bunkers and auxiliary field fortifications from the 1930s. Several light model-37 infantry forts known as 'řopíky', supplemented with additional military objects and temporary structures are situated near the 'Křížový buk' site. The area is a typical example of the 'Beneš Line' fortifications built from 1937 to guard Czechoslovakia from an invasion by Hitler's forces.

References: Stehlík 2001; Beneš J. a kol. 2004, 35–37.

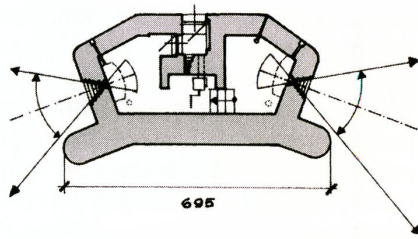
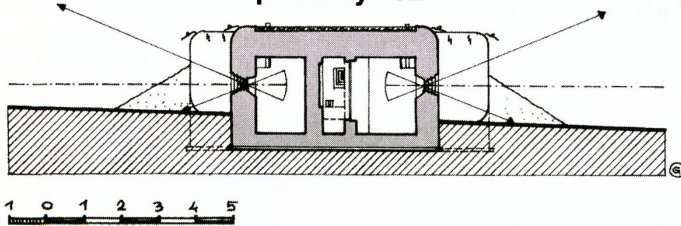
Navigation points: N 50°49'55.94", E14°29'28.57".

Map notes: A – 'Křížový buk'; 1 – model 37 light fortification; 2 – machine gun nest; 3 – forward trenches; 4 – mortar firing post; 5 – anti-tank trench.



Access map / site plan.

After Kuna et al. 2014.

A-140 lomený**podélný řez**

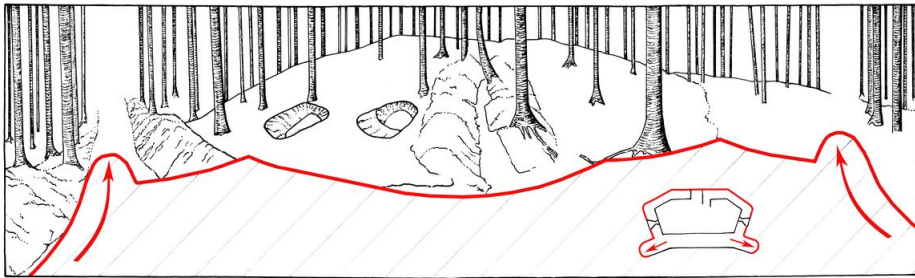
Varianty lehkého objektu vz. 37 typ A (kresba O. Gregar).

Cross-section and groundplan of the bunker model 37, variant A-140 that exists at the site of Kytlické Mlýny.
After V. Kupka.



The so-called pigtails were used for stretching of barb wire and camouflage sheets.

Photo Z. Kačerová, 2014.



Wide-angle and, thus, distorted view from top of the bunker model 37 towards the rear. Antitank moat (quite left) in the line of fire of one of side heavy machine guns; square construction used for storage or living; approach trench and a fire ride. Remains of two periscopes are still visible on the bunker's top.

Photo Z. Kačerová, 2014; drawing J. Minarčíková, 2014.



Machine-gun nests, supplementing stable positions of the light fortification.

Photo Z. Kačerová, 2014.

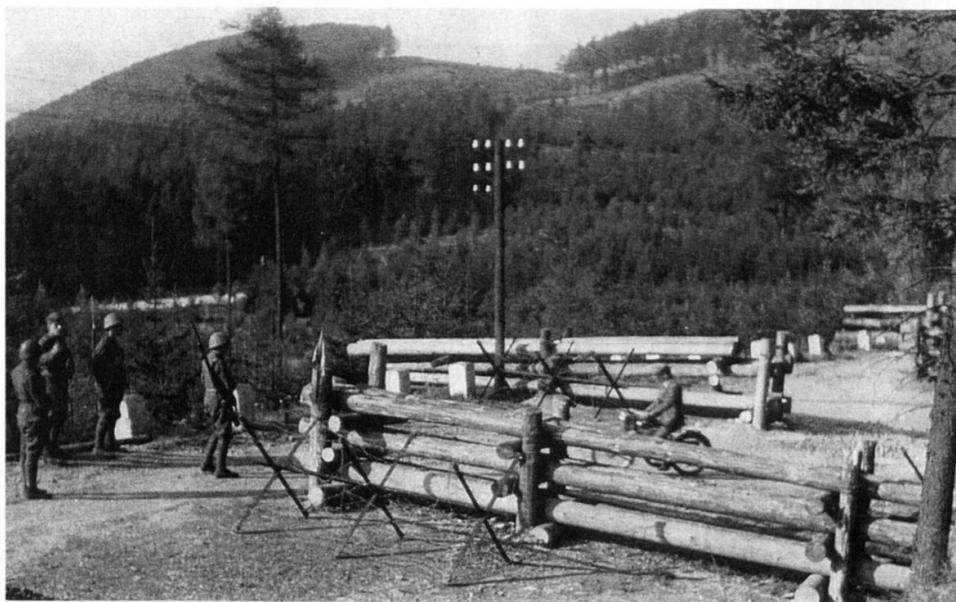


Fire rides in the area of Křížový buk on a period photograph.



Gamekeeper's lodge near Tříkřížový beech around 1930.

After B. Hamák and F. Kupka.



Roadblock in the area of Křížovém buk s československou hlídkou v r. 1938.
After B. Hamák and F. Kupka.



View of the machine-gun nest rear in the area of Křížový buk in 1938.



Elites of the Nazi Wehrmacht with A. Hitler in front on October 6th, 1938 examine Czechoslovak light fortification in the area of Křížový buk.