

# Hvoždany u Bechyně, Tábor dist., South Bohemian Region

## Prehistoric barrow cemetery 'Hemery'

(1600–450 BC)



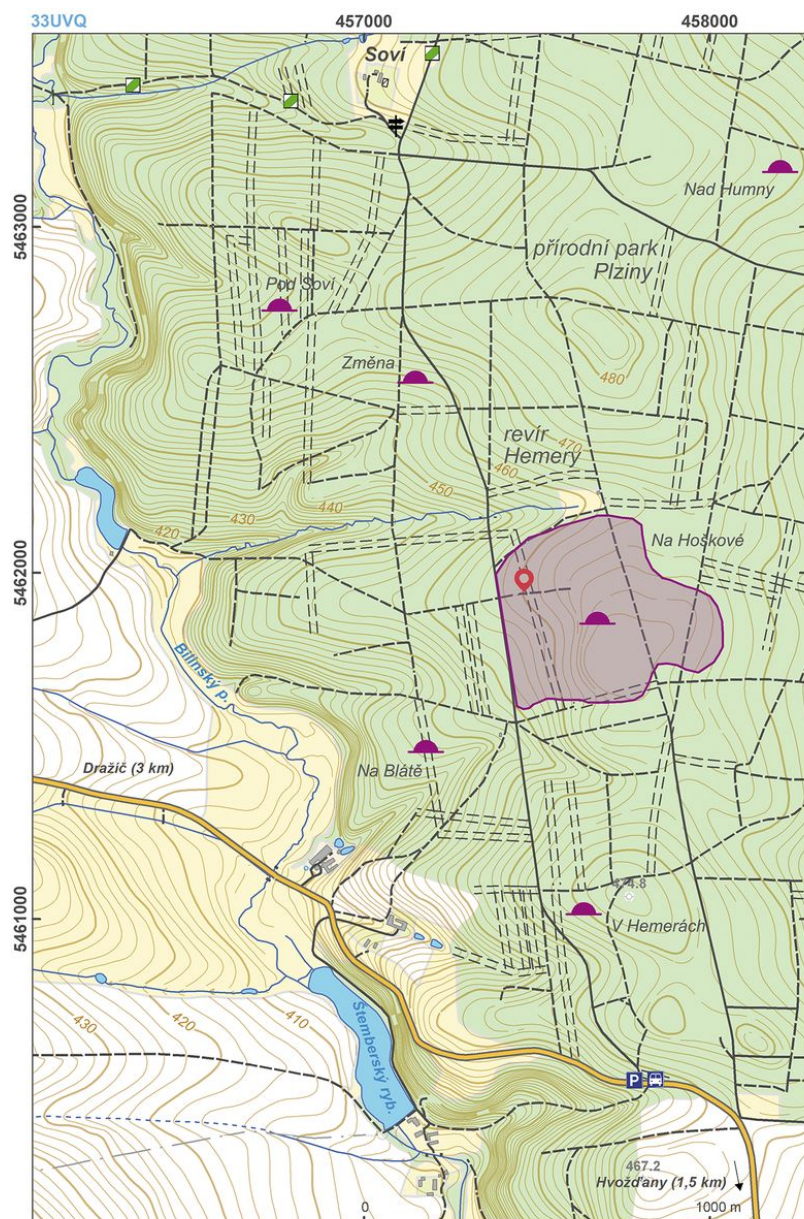
One of the largest and best preserved south Bohemian barrow cemeteries, which was used over a long period from approximately 1600 BC to 450 BC (Middle Bronze Age to Hallstatt Period). Over this time span the burial ritual, the size and construction of barrows, and grave goods (ceramic vessels, bronze and iron weapons, jewellery and glass beads) gradually changed. As was the case with the majority of such sites, the barrow cemetery of 'Hemery' was investigated as early as in the 19th century but, on the contrary to other sites, about one third of 98 barrows have been preserved unexcavated until today.

**References:** Píř 1896, 1900; Dubský 1949; Venclová a kol. 2008; Menšík 2010; Chvojka – Michálek 2011.

**Navigation points:** N 49°18'31.50", E 14°24'52.23".

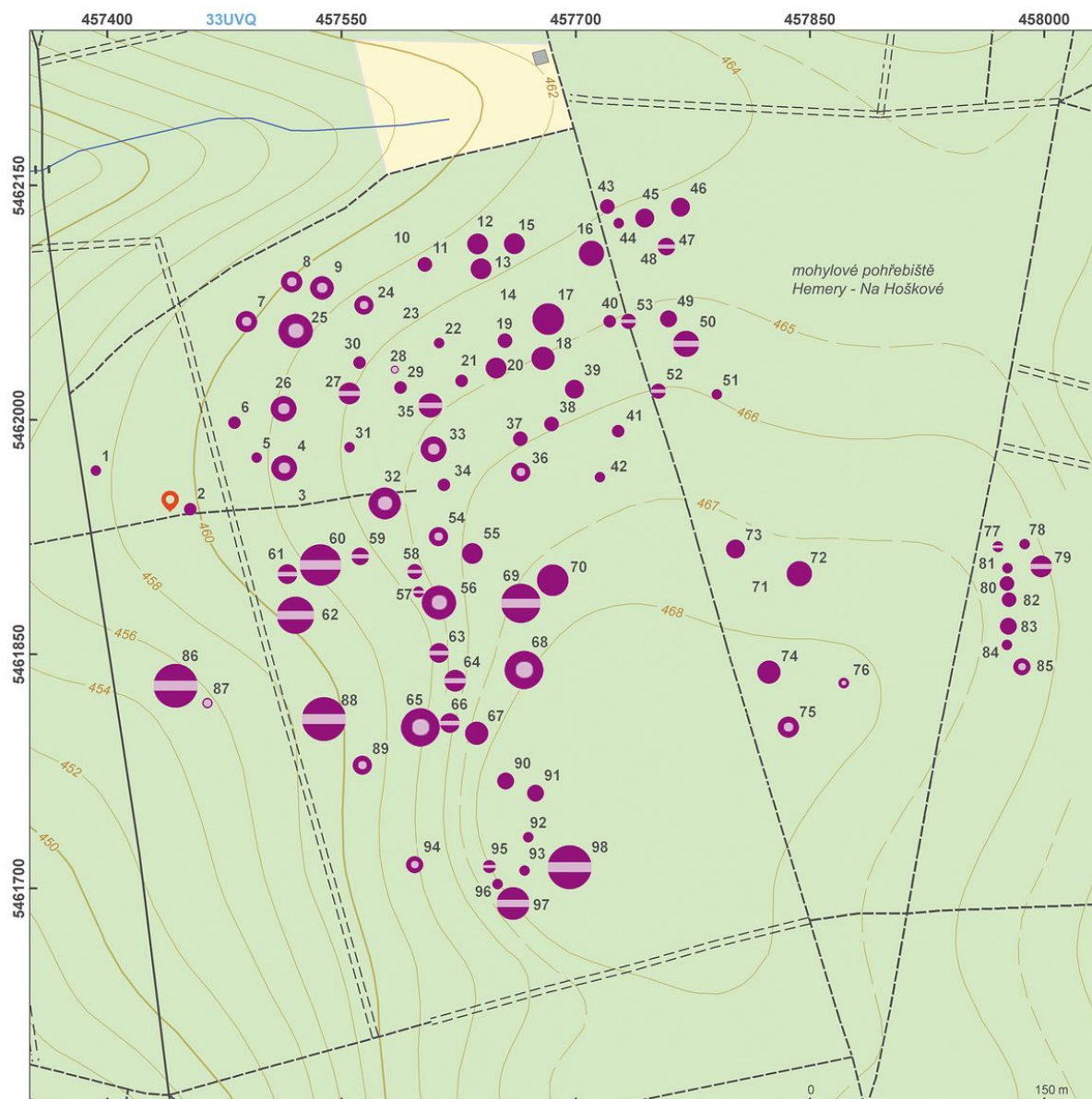
**Map notes:** 1–98 – barrows.





Access map.

After Kuna et al. 2014.



Site plan.

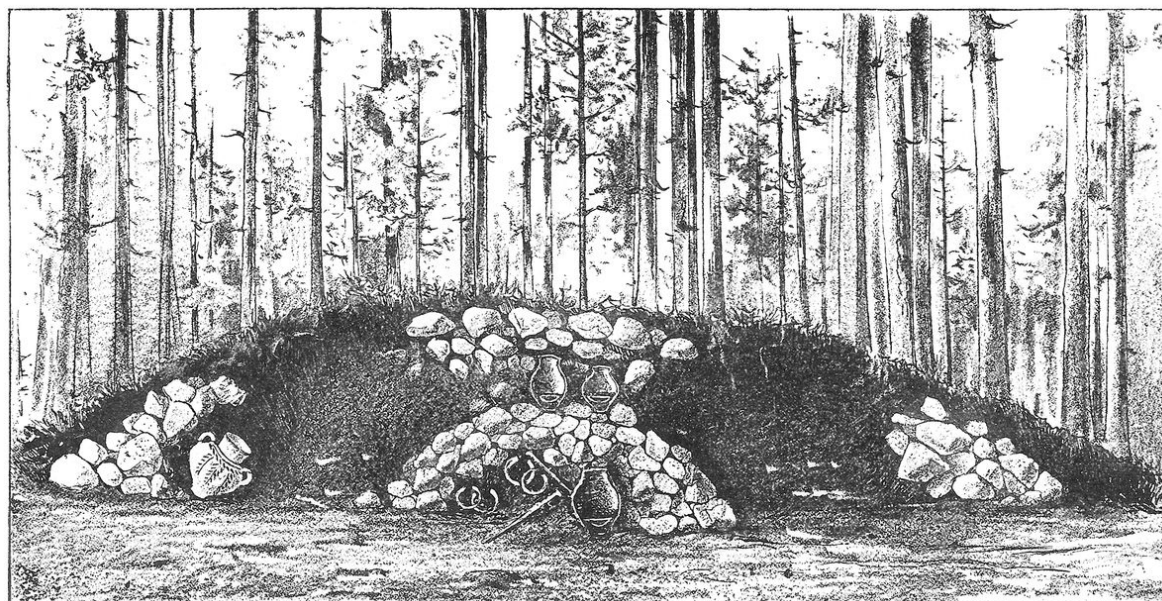
After Kuna et al. 2014.





A barrow on a clearing.

Photo Z. Kačerová, 2013.



Cross-section of a barrow.

After Píč 1900.