

Hradištko u Sadské, Nymburk dist., Central Bohemian Region

Deserted Medieval village 'Lhota na Kří'

(14th cent.)

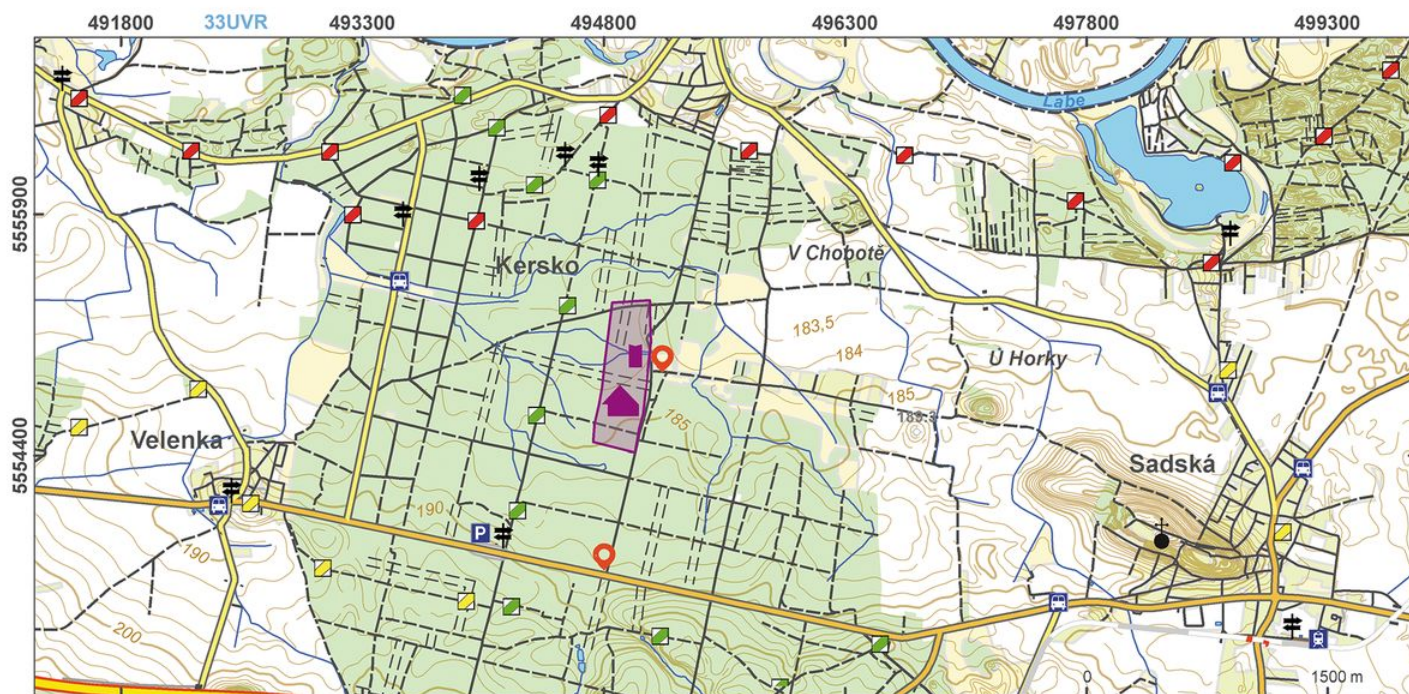


Deserted medieval village of 'Lhota na Kří' lies on grounds of the original royal hunting forest, which remained unsettled until the High Middle Ages. Like the other four surrounding villages, 'Lhota na Kří' was founded around the mid 14th century, but due to unfavourable soil conditions it was abandoned by the end of the same century. Although fifty homesteads were planned for the village, only some of them, and a characteristic motte fortified manor (tower house), were built during the short period of the village's existence.

References: Klír 2008, 2014.

Navigation points: N 50°08'06.41", E 14°55'38.71"; N 50°08'47.54", E 14°55'52.60" (east).

Map notes: A – remains of homesteads; B – original village green; C – motte fortified manor; D – 'Káň' pond, which fed the manor moat; E – remains of a homestead.



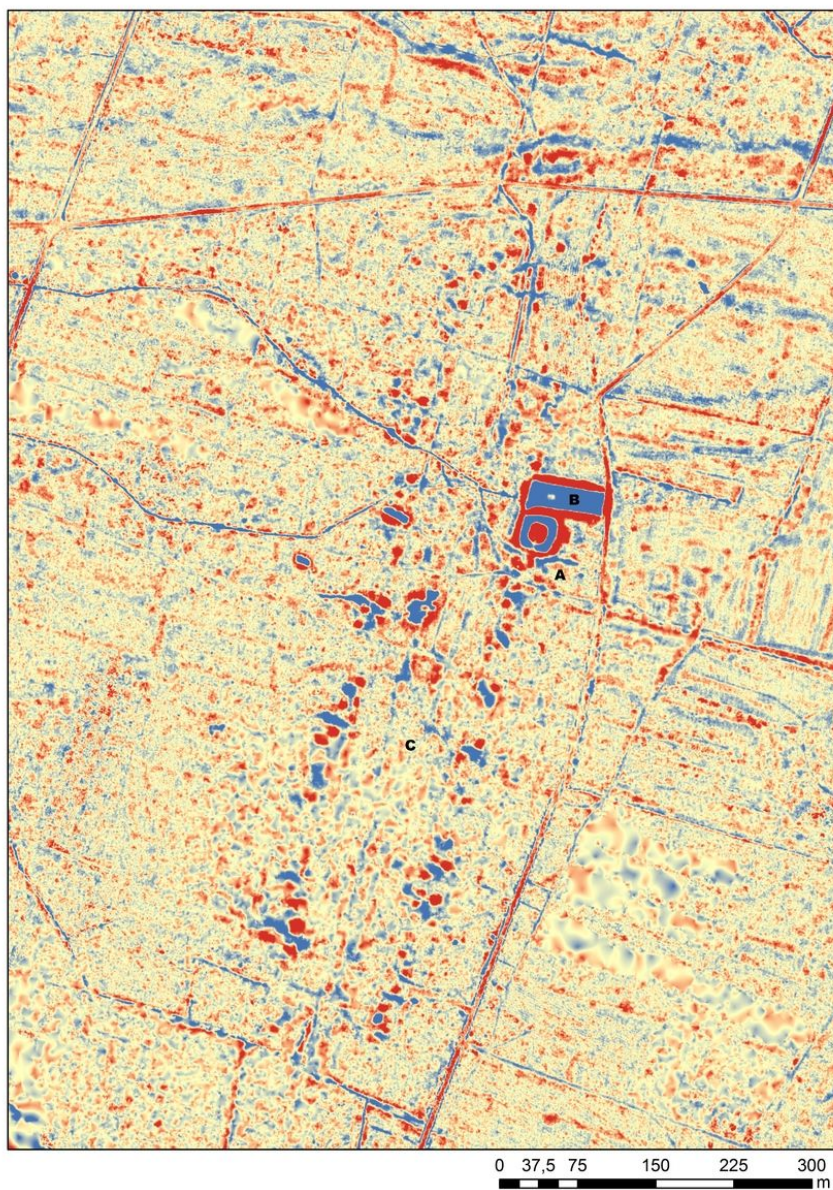
Access map.

After Kuna et al. 2014.



Site plan.

After Kuna et al. 2014.



LLS picture of the village: fortified manor with adjacent farmstead (A), Káň Pond (B); square (C).

Data ČÚZK Prague; processed by J. Hasil, 2015.



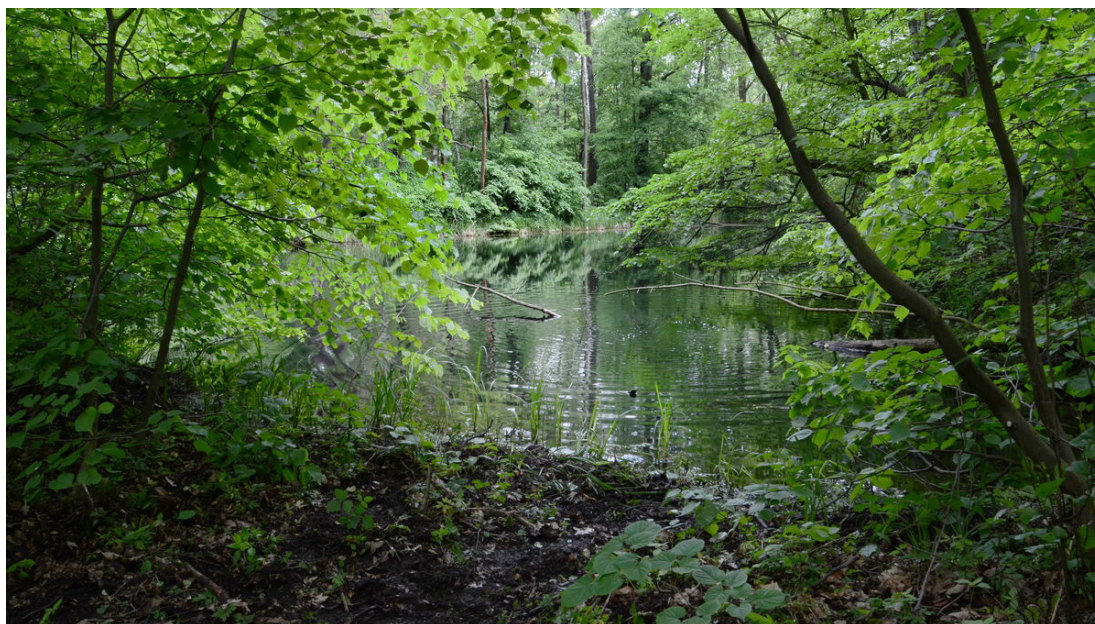
Entrance to the fortified manor crossing over water moat.

Photo Z. Kačerová, 2013.



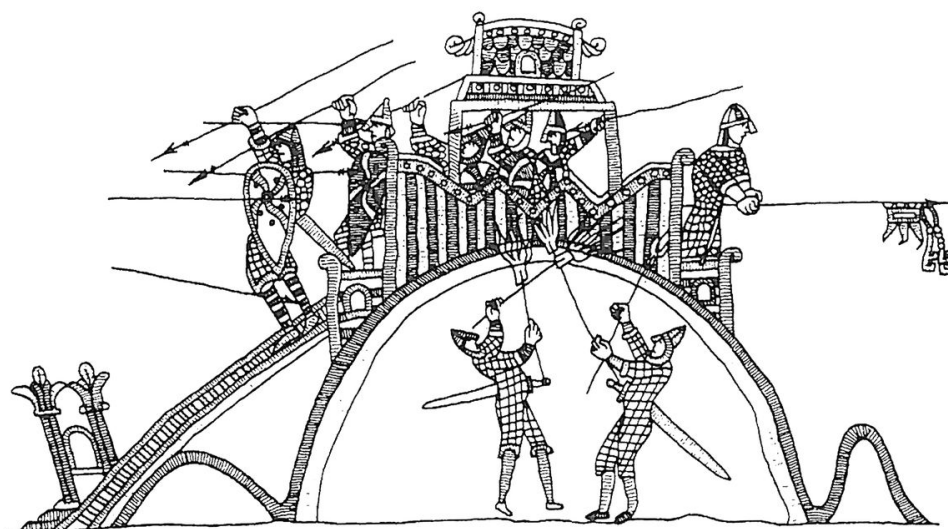
Aerial view of the fortified manor and Káň Pond.

Photo M. Gojda.



Dreamy surface of Káň pond.

Photo Z. Kačerová, 2013.



Bayeux tapestry depicting fight over a small fortified manor.

After Hinz 1982.