

Brníčko u Zábřeha, Šumperk distr., Olomouc Region

Medieval castle Brníčko

(from the 1st half of the 14th cent. to the beginning of the 16th cent.)

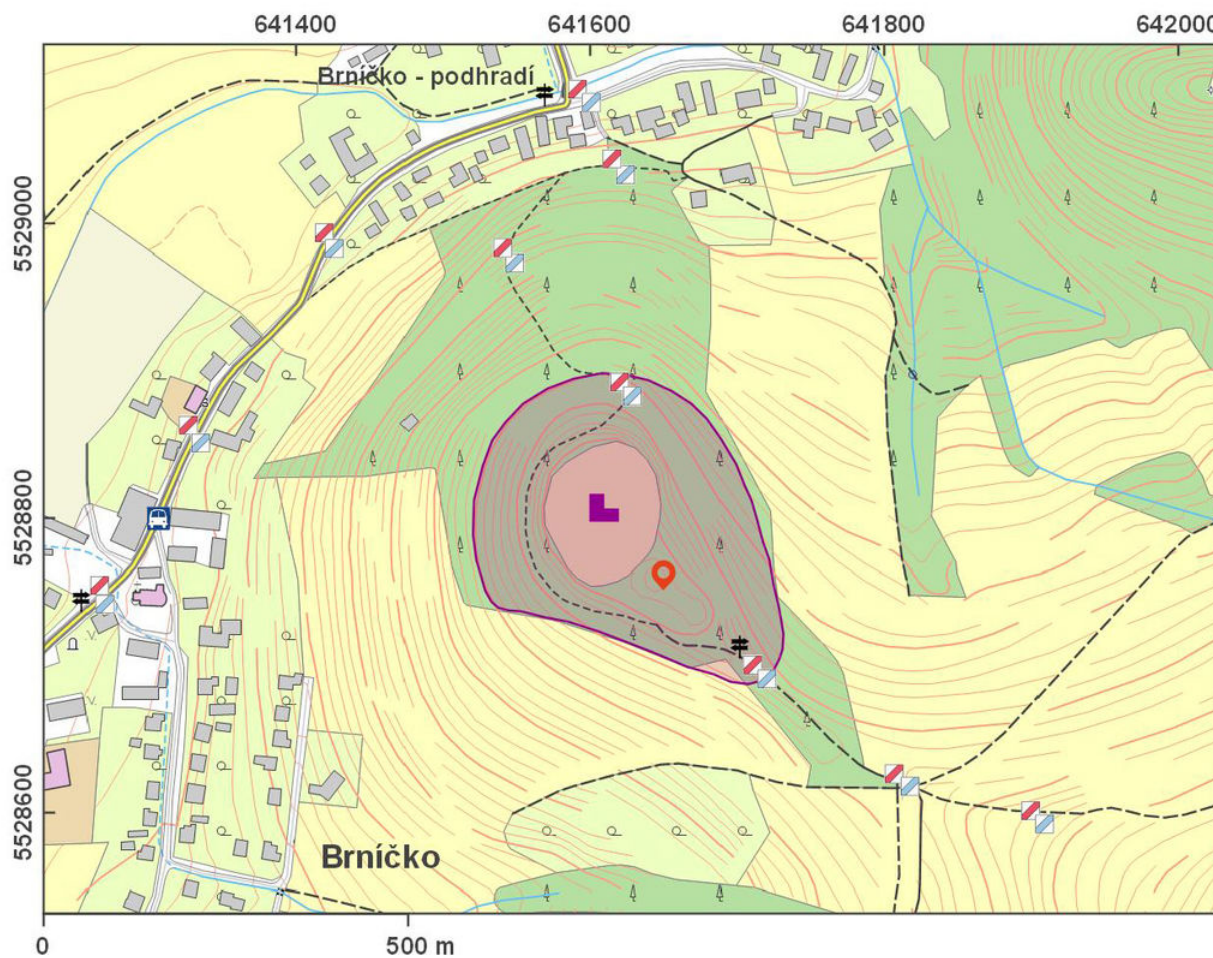


This high medieval castle shows preserved walled structures. It was erected in the 1st half of the 14th century, and by the end of the century, it was transferred to Margrave Jošta, who donated it to Bernhard Hecht of Schützensdorf. After the Hussite Wars, it passed to Jan Tunkl, who made it the seat of his family. The last owner was Ladislav of Boskovice; in 1513, the castle was already described as deserted. In 2010–2011, the ruins were subject to an archaeological excavation and were renovated. Brníčko is a castle with a mantlet construction encircled by a ditch and earthwork. The second – outer – moat separates the lower ward from the bulwark, which is followed by another earthwork.

References: Hosák 1972; Unger 1980; Plaček 2001; Vrla 2007; Halama 2011; Štábllová 2011; Novosadová 2013.

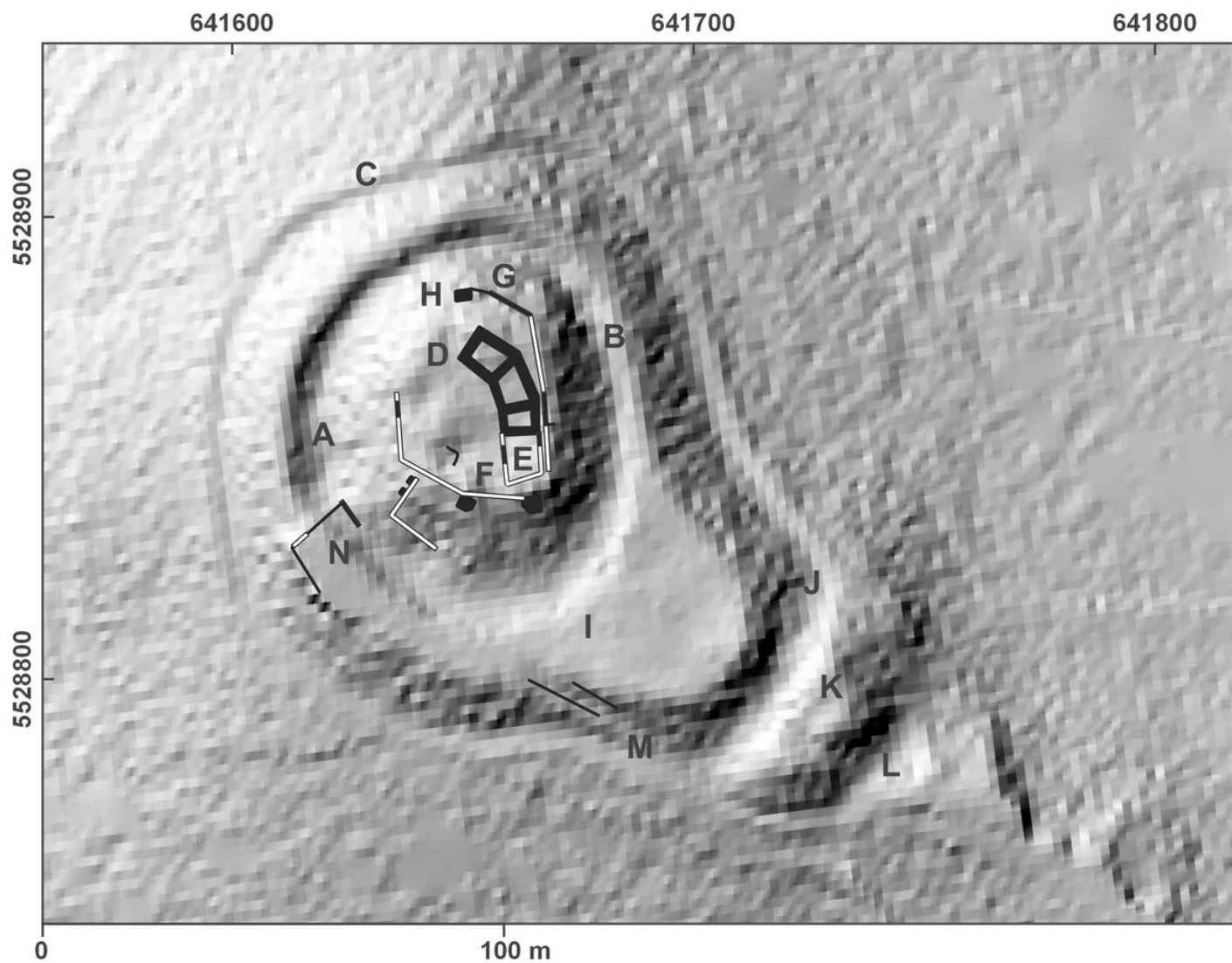
Navigation point: N 49°53'41.97", E 16°58'21.67".

Map notes: A, L – ditches; B, C – earthworks; D – three-room residential building; E – cellar room; F, H, N – pillars; G – zwinger wall; I – lower ward; J – ditch; K – bulwark; M – access road.



Access map.

After Tomášek et al. 2015.



Site plan and LLS picture.

After Tomášek et al. 2015.



Residential buildings, view from the court.

Photo H. Dehnerová, 2015.



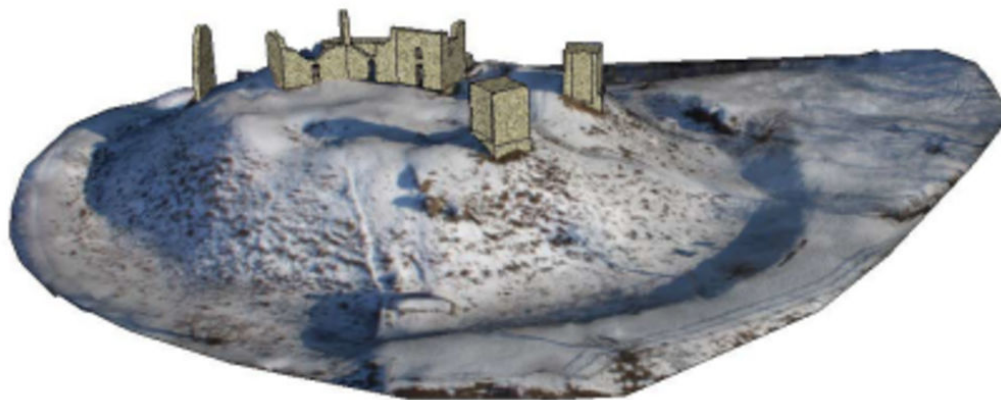
View of the upper ward from the south-west.

Photo H. Dehnerová, 2015.



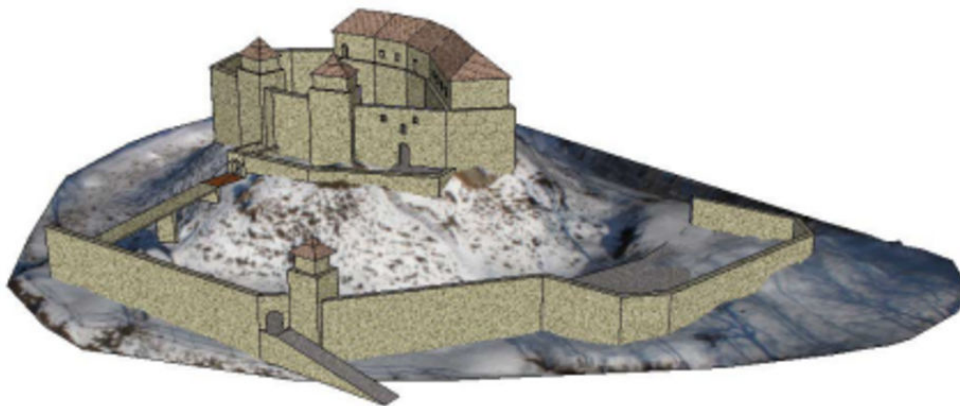
Overall view of the castle from the south-west.

Photo H. Dehnerová, 2015.



Model of the castle.

After Novosadová 2013.



Restoration of the castle.
After Novosadová 2013.