

# Adamov, Blansko distr., South Moravia Region

Medieval and early modern iron melting area

(prehistory, Middle Ages, modern and industrial periods)



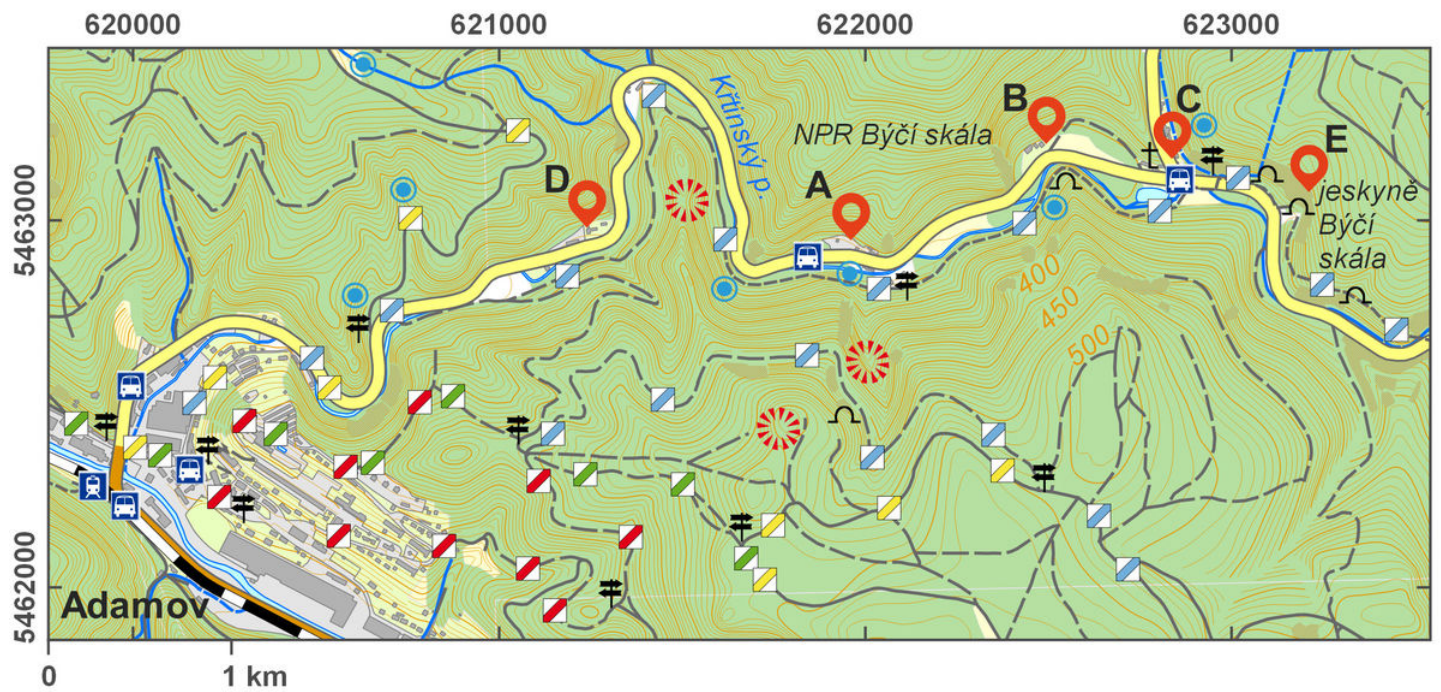
The valley (Josefovské údolí) is a vast area with a long tradition of handicraft and industrial production based mainly on the processing of iron ore mined in the surroundings. We know evidence of forging tools already from the 5th century BC from the nearby Býčí skála Cave; archaeological excavations in the neighbourhood have detected iron furnaces (shaft furnaces heated with charcoal) from the Early Middle Ages (7th–12th centuries). Remains of an early modern hammer mill (called Althamr) and objects connected with Stará huť (also Huť Františka) from the 18th–19th centuries (such as a charcoal iron furnace, hammer mill, glass works, powder works and others) were part of the area. The area is a protected heritage reserve, and one of the buildings houses serves as an exhibition on iron smelting organized by the Technical Museum in Brno.

**References:** Slavík 1902; Kreps – Merta 1972; Naučná stezka Josefovské údolí 1978; Souchopová a kol. 2002; Merta 2009; Štěpán 2009.

**Navigation point:** N 49°18'23.46", E 16°40'39.95" (Stará Huť).

[https://www.archeologickyatlas.cz/en/lokace/adamov\\_bk\\_hutnický\\_areál](https://www.archeologickyatlas.cz/en/lokace/adamov_bk_hutnický_areál)

**Map notes:** A – Stará Huť area; B – 'Althamr'; C – glass works; D – powder works; E – the Býčí skála Cave.



Access map/site plan.

After Tomášek et al. 2015.



View of the backfill ramp, a pair of lime kilns and the administrative building.  
Photo K. Sklenář, 2009.



Ramp of the Františka blast furnace.  
Photo K. Sklenář, 2009.